

ADDRESSING ENVIRONMENTAL CHALLENGES

Environment and Sustainability in Italy

REPRESENTATIVE SERVICES

An aerial photograph of a river winding through a vast, dense forest. The river is a deep blue color, contrasting with the lush green of the surrounding trees. In the foreground, a concrete bridge with a metal railing spans the river. A small vehicle is visible on the bridge. The forest extends to the horizon, where a body of water is visible under a clear blue sky.

ABOUT AECOM

ABOUT AECOM

AECOM is a global network of design, engineering, construction and management professionals partnering with clients to imagine and deliver a better world. As a premier, fully integrated infrastructure firm, we unlock opportunities, protect our environment and improve people’s lives.

For the last four years, we have been named one of Fortune’s World’s Most Admired Companies. Additionally, we have ranked as Engineering News-Record’s #1 design firm by revenue for eight consecutive years and recognized as Construction Dive’s Company of the Year for the second year in a row.

47k

People

7

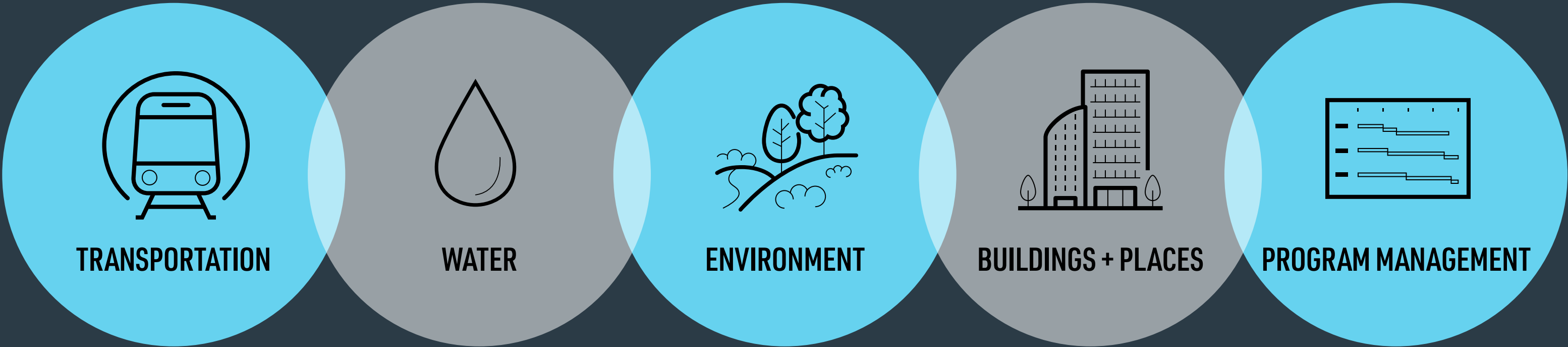
Continents

150+

Countries

#1

Transportation and Buildings Design Firm, ENR-Ranked



OUR GLOBAL AREAS OF EXPERTISE:

SOIL AND GROUNDWATER

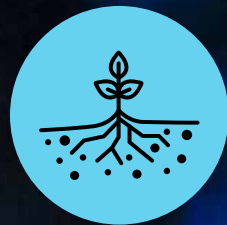
- Environmental and geotechnical surveys
- Design (remediation, feasibility, modelling liability assessment, legal technical assistance)
- Remediation (environmental remediation works, EPC, EPCM, O&M)
- Decommissioning, demolition and environmental site redevelopment

ENVIRONMENTAL HEALTH AND SAFETY

- Transaction & M&A
- EHS management, energy management
- Work direction and statutory roles
- Sustainability
- Environmental impact assessment (SIA, VIA, VinCa), permitting, IPPC directive assistance
- Naturalistic studies, flora/fauna studies for the management of endangered species



SOIL AND GROUNDWATER



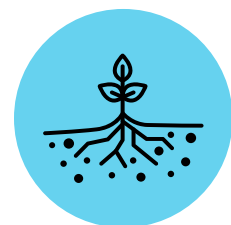
SOIL AND GROUNDWATER

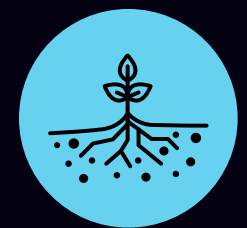
With one of the largest remediation teams in Italy, we provide innovative technical solutions offering substantial savings compared to traditional approaches.

Our Italian team has provided innovative and specific solutions to help our clients in achieving their goals while preserving and valorizing the environment and the assets for over 30 years.

Our global network of 9.000 + environmental experts allow us to share expertise, leading-edge technology and best practices with regards to soil and groundwater management.

From initial due diligence through site characterization and risk assessment, our methodical approach guarantees the selection of the best remediation design with regards to sustainability, value for money, law compliance, and site operations.





SOIL AND GROUNDWATER

REPRESENTATIVE SERVICES

- Soil and groundwater investigations
- Quantitative risk assessments for human health and ecosystems
- Cost-benefit analysis
- Forensic expert reports
- Monitoring systems
- Data collection and analysis
- Stakeholder engagement
- Environmental context analysis
- Digital environmental management
- Remote monitoring
- Work sharing
- Development of technical guidelines



SOIL AND GROUNDWATER CHARACTERIZATION CAMPAIGNS

Italy

Our soil and groundwater teams can be deployed as soon as needed. Making leverage on a qualified network of drillers and laboratories spread over Italy, we can deliver digital environmental assessments to clients within a short timeframe.



SOIL AND
GROUNDWATER

GROUND WATER MODELLING

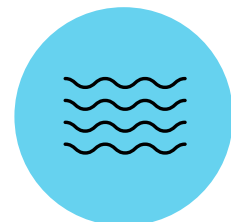


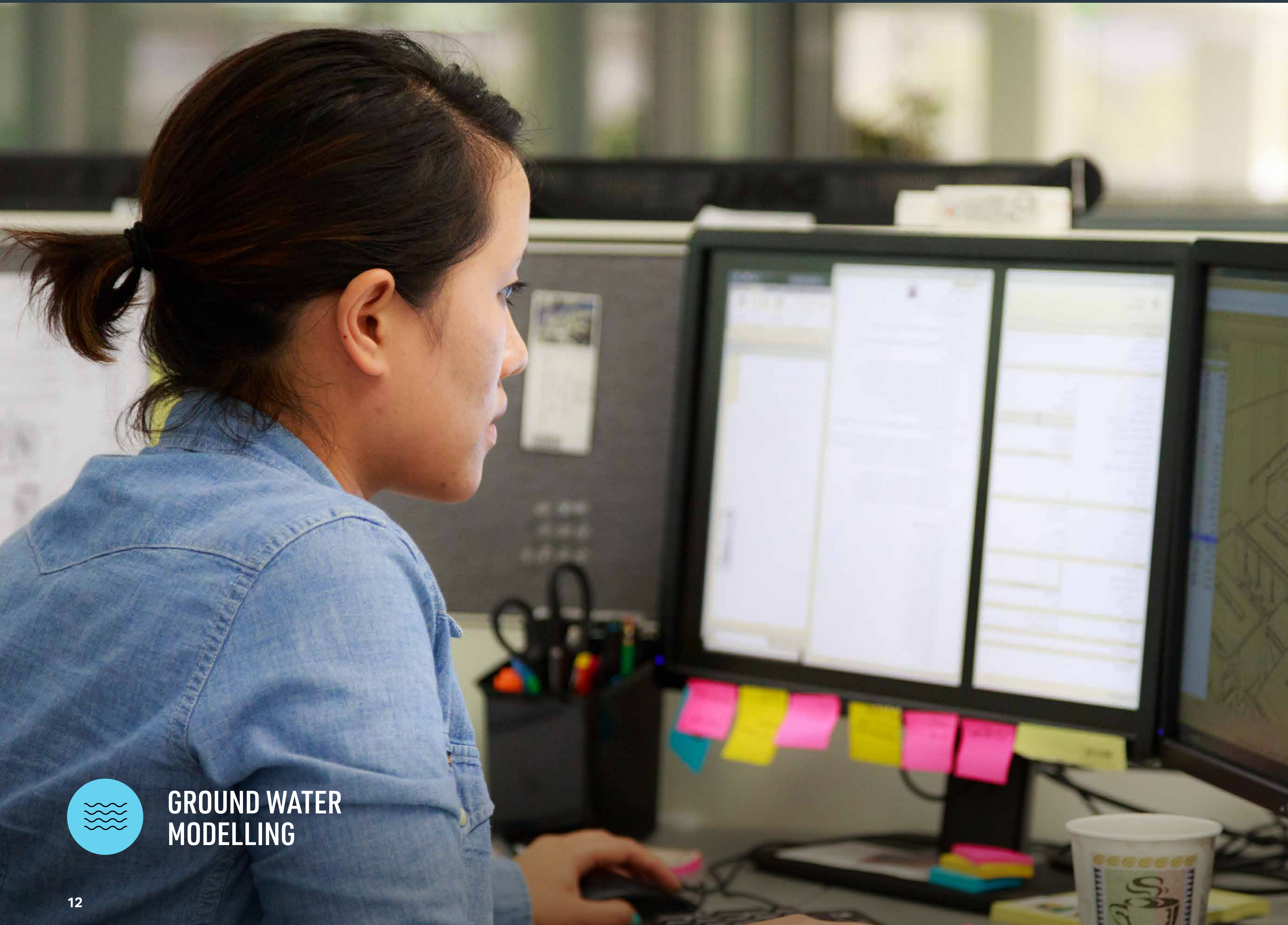
GROUND WATER MODELLING

AECOM has strong groundwater modelling capabilities. In Italy, a specialized team of groundwater modelers with more than 25 years of experience, establishes a center of excellence serving the Italian and European market.

Our in-house specialized team plays a vital role in protecting groundwater resources and provides a complete range of groundwater modelling services. Numerical modelling is used as a tool to help engineering design, environmental planning and decision making, water resource protection and sustainable use, land reclamation and aquifer clean-up.

Our modelers use state-of-art software packages developed by the major numerical modelling software houses (Danish Hydraulic Institute, Deltares, Schlumberger Scientific Software, USACE).

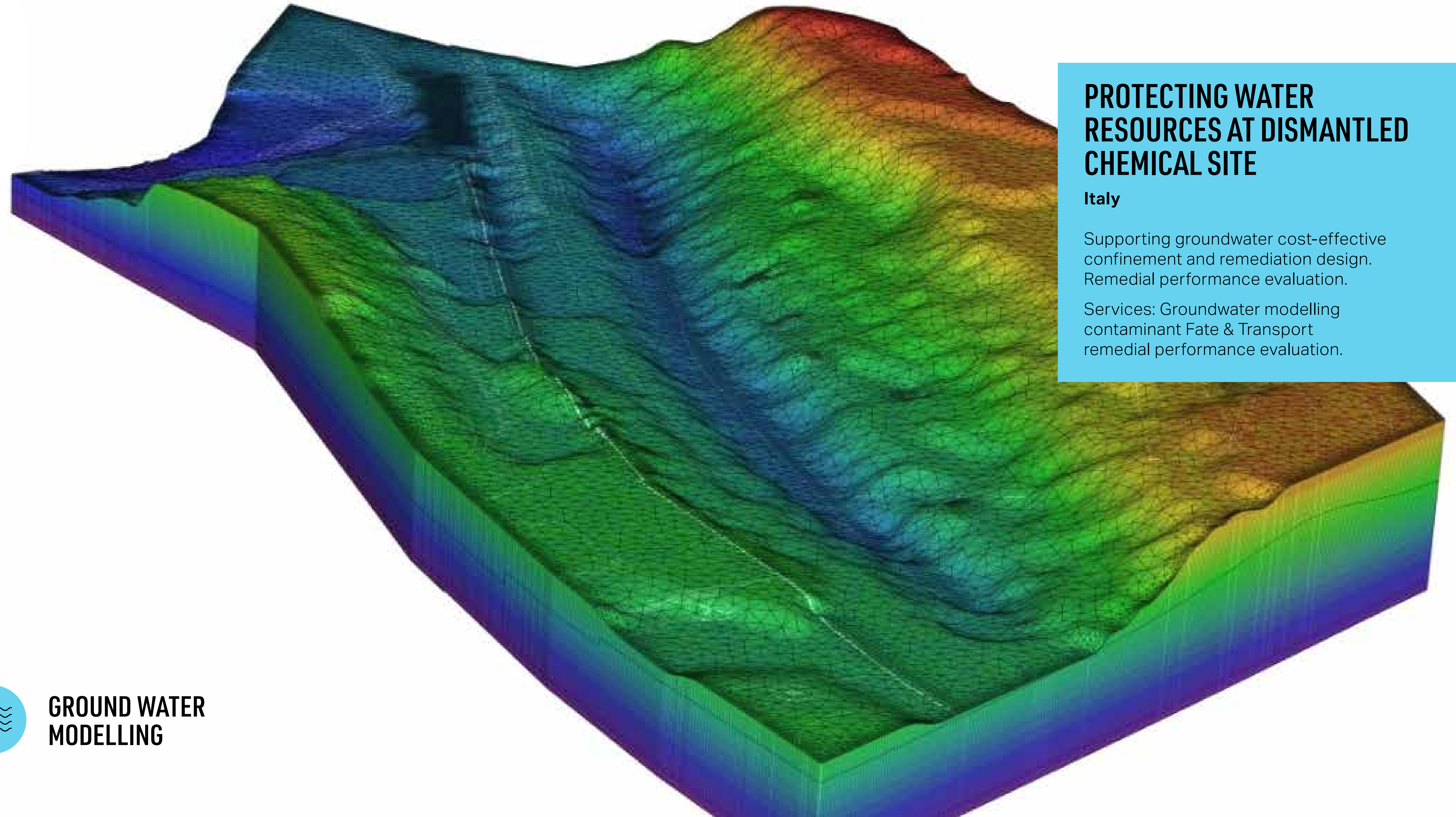




GROUND WATER MODELLING

REPRESENTATIVE SERVICES

- Groundwater modelling contaminant Fate & Transport
- Risk assessment for groundwater resources
- Cost-effective confinement and/or remediation design
- Remedial performance evaluation
- Support in decision making for remediation closure
- Support in environmental liability assessment and litigation
- Groundwater resource availability and vulnerability assessment
- Optimization of groundwater supply and management strategies
- Monitoring network design and site data interpretation
- Support in impact assessment and environmental permitting
- Dewatering modelling

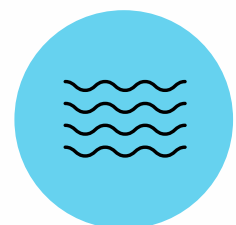


PROTECTING WATER RESOURCES AT DISMANTLED CHEMICAL SITE

Italy

Supporting groundwater cost-effective confinement and remediation design. Remedial performance evaluation.

Services: Groundwater modelling contaminant Fate & Transport remedial performance evaluation.



**GROUND WATER
MODELLING**

ENVIRONMENTAL CHARACTERIZATION



ENVIRONMENTAL CHARACTERIZATION

AECOM has been operating in Italy since the early '90s carrying out services related to soil and groundwater investigations and has mainly focused on the identification of contamination processes occurring in environmental matrices (soil and groundwater) or achieving basic information to make valuable and sustainable decisions for the remediation of the site. (Annex 2 of Title V, Part IV of Legislative Decree no. 152/06 and its amendments).

A methodical approach that guarantees regulatory requirements through a value for money approach. The Italian team has vast experience in working with "SIN" areas (contaminated sites of national interest).

Our team has successfully contributed to the development of innovative tools and strategies for a quick and sustainable assessment of the site conditions. Our work has resulted in many successful stories where clients were able to recover the value of a property or where we contributed generating welfare in affected communities through the valorization of an asset.





REPRESENTATIVE SERVICES

- Phase I Environmental site assessment (ESA)
- Phase II site Investigations
- Identification of contamination of concern and 3D definition of the plume
- Database creation and management
- Consultancy at technical tables or public hearings with the authorities



**ENVIRONMENTAL
CHARACTERIZATION**



CORPORATE CLIENT CONFIDENTIAL

Italy / Marche region

AECOM carried out cutting-edge environmental soil and groundwater characterization in order to define residual contaminants and update refining remedial strategies.

Services: Real-time measurements using membrane interface hydraulic profiling tool (MiHpt), within an approach to streamline brownfield site assessment and clean-up, EPA-BSTC).



ENVIRONMENTAL
CHARACTERIZATION

GEO TECHNICAL ENGINEERING



GEOTECHNICAL ENGINEERING

AECOM provides a full range of geotechnical services, comprehensive of preliminary studies of site conditions, editing of technical specifications, geotechnical investigations and geotechnical design.

Taking on projects of any scale, our geotechnical design team cuts through complexity to deliver transformational outcomes. With in-house expertise across a range of disciplines, we work to foster and transfer knowledge across projects, adding value for our clients, helping them achieve their ambitions. We work to mitigate risk and reduce uncertainty, helping to reduce costs and increase project profitability. AECOM in Italy has a long track record of geotechnical design for foundations, retaining structures and stability analysis for a wide range of works.



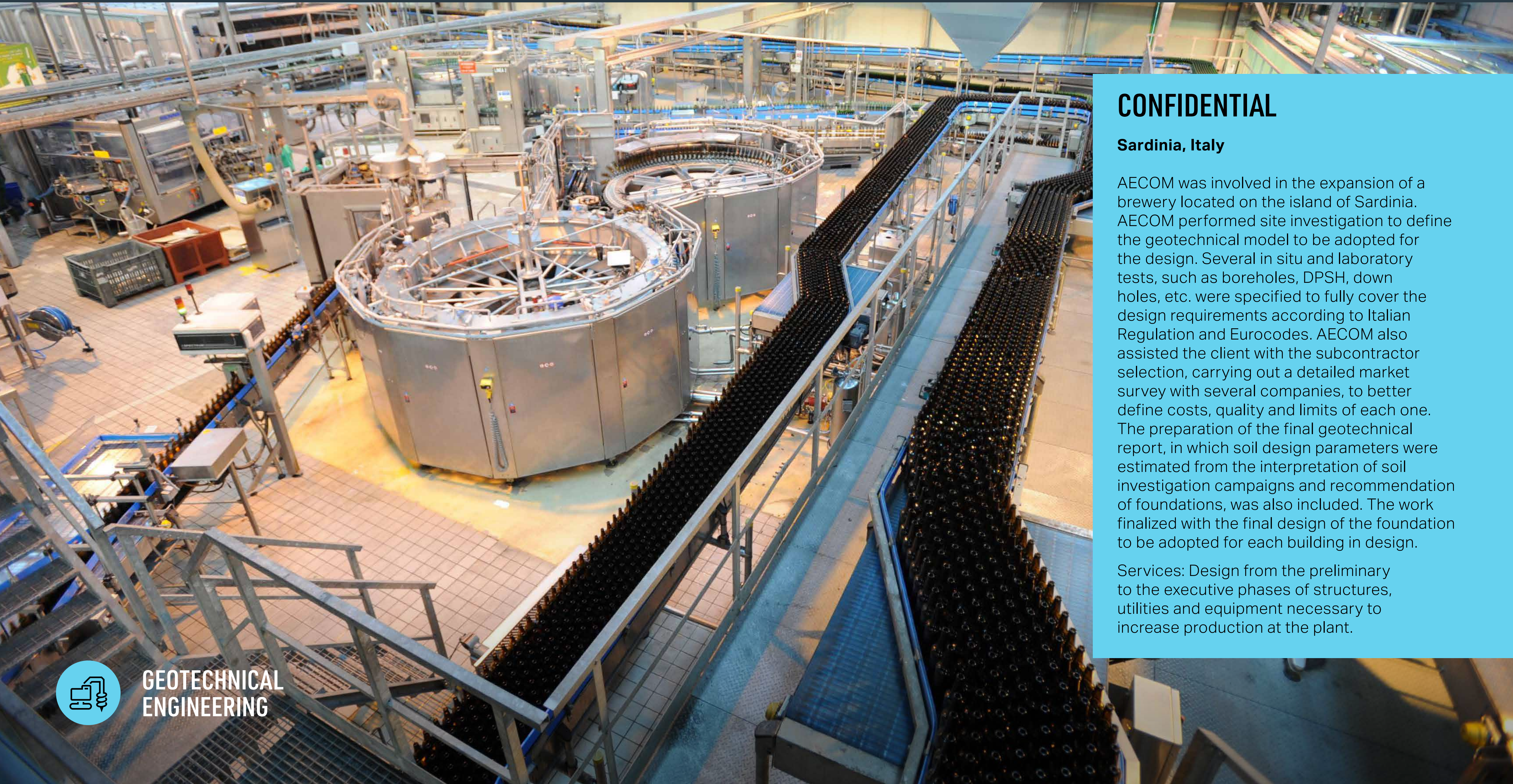


REPRESENTATIVE SERVICES

- Geotechnical studies and planning
- Geotechnical investigations
- Geotechnical design for foundations and retaining structures



**GEOTECHNICAL
ENGINEERING**



CONFIDENTIAL

Sardinia, Italy

AECOM was involved in the expansion of a brewery located on the island of Sardinia. AECOM performed site investigation to define the geotechnical model to be adopted for the design. Several in situ and laboratory tests, such as boreholes, DPSH, down holes, etc. were specified to fully cover the design requirements according to Italian Regulation and Eurocodes. AECOM also assisted the client with the subcontractor selection, carrying out a detailed market survey with several companies, to better define costs, quality and limits of each one. The preparation of the final geotechnical report, in which soil design parameters were estimated from the interpretation of soil investigation campaigns and recommendation of foundations, was also included. The work finalized with the final design of the foundation to be adopted for each building in design.

Services: Design from the preliminary to the executive phases of structures, utilities and equipment necessary to increase production at the plant.



**GEOTECHNICAL
ENGINEERING**

ENVIRONMENTAL REMEDiation

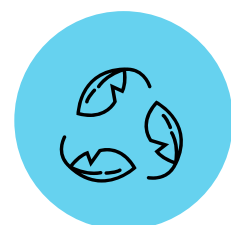


ENVIRONMENTAL REMEDiation

As a sector leader in land contamination and remediation services, AECOM provides services ranging from planning, coordination, scheduling and cost control, to design, construction, commissioning and/or operation & maintenance.

Over the past 10 years, AECOM has performed more than 1,800 investigations and remediation projects for

both industrial/commercial and government clients in Italy. With one of the largest remediation teams in Italy, we provide innovative technical solutions offering substantial savings compared to traditional approaches. Our experts in Italy have been involved in the protection and remediation of soil and groundwater for decades. We work on projects of all sizes, designing innovative and specific solutions for each case.





REPRESENTATIVE SERVICES

- Site investigation
- Human health and Ecological risk assessment
- Remedial strategy development
- Remedial design and Pilot testing
- Remedial construction
- Green and Sustainable remediation
- Emerging contaminant expertise
- Remedial process optimization and O&M
- Regulatory negotiation
- Facility closure/Decommissioning

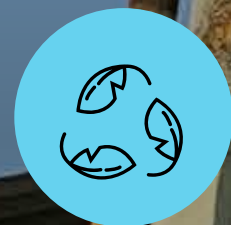


**ENVIRONMENTAL
REMEDATION**

COMMISSARIO STRAORDINARIO BRESCIA-CAFFARO / CAFFARO SITE REMEDIATION DESIGN

Brescia, Lombardy - Italy

Since 2018, AECOM is providing A/E Environmental support for the remediation of soil and groundwater at a former PCB productive site which has been active for over a century. AECOM carried out environmental investigations, monitoring and hydrogeological modeling activities aimed at defining targets and thresholds of the remediation works. The design had to consider preliminary demolition and decommissioning of the dismantled industrial plants and buildings and was finally approved by the Italian Ministry of Environment. AECOM is currently supporting the client with the final design.



**ENVIRONMENTAL
REMEDATION**

DECOMMISSIONING AND DEMOLITION



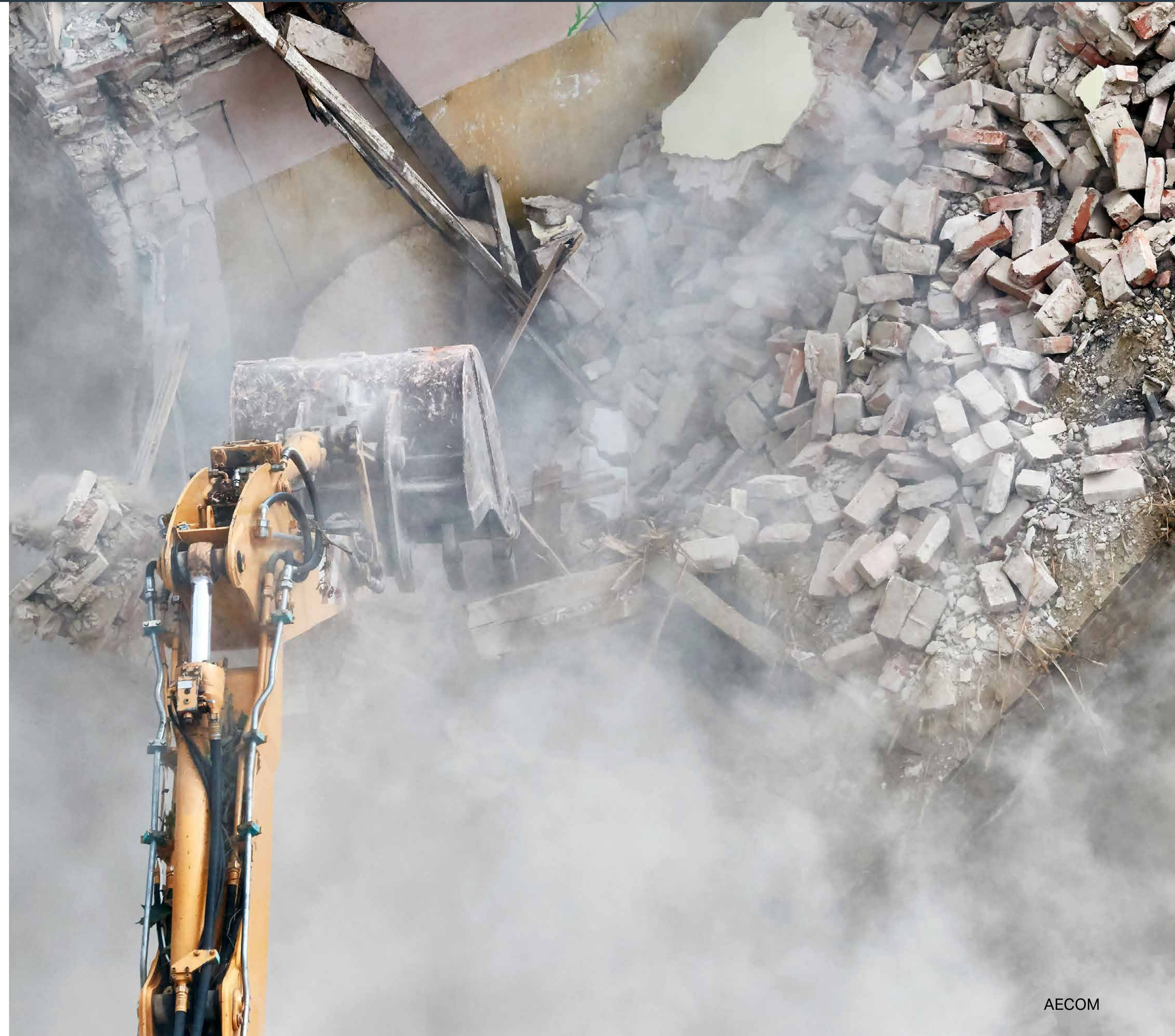
DECOMMISSIONING AND DEMOLITION

When a site's useful life comes to an end, AECOM helps bring the project to a successful close with our decommissioning and closure services.

At AECOM we support our clients in the study of the different alternatives, evaluating the risks, deadlines and costs, until the ideal strategy is reached.

As part of the decontamination phase, AECOM provides support removing residual hazards from systems, surfaces, and structures. During the demolition phase, structures are removed, and materials are safely disposed of or recycled.

AECOM participates in all phases of the project, from strategic planning and design, to works management and implementation, looking forward to minimizing environmental liabilities and risks while maximizing the asset's value.





DECOMMISSIONING AND DEMOLITION

REPRESENTATIVE SERVICES

- Investigation and assessment of building fabric
- Investment recovery
- Hazardous materials survey
- Decontamination design
- Work-plan development
- Dismantle engineering
- Planning, scheduling, budgeting
- Validation and reporting
- Designer, supervisor or principal contractor
- D4 full process: Deactivation, Decommissioning, Decontamination, Demolition
- Asbestos risk minimize projects, including surveys and removals design



LENLEASE

Milan/Lombardy, Italy

Demolition and deconstruction of buildings in the Western area of the MIND (Milan Innovation District) site and disposal of the resulting materials, including the activities necessary to safely complete the works.

Services: Supervision of works for demolitions, authorization procedures, waste management plan, executive project for demolition works, delivery of the areas at the end of the works duly arranged and in safety.



**DECOMMISSIONING
AND DEMOLITION**

ENVIRONMENTAL, SOCIAL AND CORPORATE GOVERNANCE



ENVIRONMENTAL, SOCIAL AND CORPORATE GOVERNANCE

AECOM is one of the world's largest sustainability planning and implementation firms. We can support clients develop their ESG strategy as well as support the design and development of a wide range of initiatives.

AECOM's Corporate advisory & sustainability services aggregates our technical and management consulting services around our client's enterprise sustainability programs and initiatives. These engagements can vary significantly from technical projects supporting corporate initiatives to EHS and sustainability management systems, to consulting to corporate sustainability strategy and planning work.

With ESG's scope and client needs continuously changing, AECOM's vast service offerings and sector expertise make all the difference. Our global network of sustainability practitioners allows us to identify the necessary knowledge and expertise to solve complex and multifaceted challenges.





REPRESENTATIVE SERVICES

- Enterprise sustainability strategy and planning
- Sustainability program development
- Sustainability reporting and disclosure (e.g., GRI, CDP, DJSI)
- Materiality assessment and corporate benchmarking
- Environmental, social, and governance due diligence
- Stakeholder mapping and engagement
- Climate resiliency planning
- Ecosystem services / Natural capital accounting
- Life cycle analysis / Assessment
- Carbon / GHG management
- Water management
- Energy management
- Waste reduction and recycling
- Supply chain management (audits, sustainability assessments and compliance)
- Sustainable buildings and infrastructure (e.g., LEED, Envision)
- En EHS / Sustainability management and information systems



**ENVIRONMENTAL, SOCIAL AND
CORPORATE GOVERNANCE**

AEROPORTI DI ROMA – LEED AND ENVISION ASSESSMENT FOR FCO MASTERPLAN

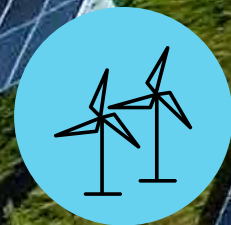
Italy

AECOM completed a peer review of the airport's Master Plan update which included an assessment of the current and future policies, programs, and projects from the perspective of the LEED and Envision sustainability frameworks. Alignment with credits from both sustainability frameworks was verified and recommendations to maximize points for each were provided to the client. Results of the assessment included a range of potential scores and related level of achievement for both programs.



ENVIRONMENTAL, SOCIAL AND
CORPORATE GOVERNANCE

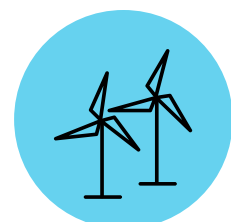
SUSTAINABILITY



SUSTAINABILITY

At AECOM we focus on delivering innovative, pragmatic and resilient sustainable development solutions. These seek to grow community support and help protect and enhance the natural environment, allowing our clients to meet the future with confidence.

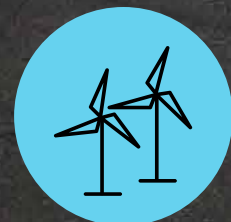
Leveraging AECOM's technical disciplines and our corporate sustainability planning experience, we guide our clients in integrating sustainability into corporate strategies, operations, and capital projects. Our unique combination of experience and services positions us to drive the advancement of sustainability from the built and natural environment to the boardroom.





REPRESENTATIVE SERVICES

- Carbon and energy management
- Circular economy applications
- Climate strategy and finance
- Natural capital and ecosystem services
- Sustainability risk and performance management
- Strategic environmental assessment
- Sustainability appraisal



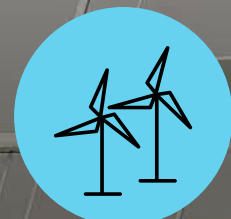
SUSTAINABILITY

OMNAM, FOUR SEASONS RESORT PUGLIA, OSTUNI SUSTAINABILITY PROJECT

Ostuni Puglia

AECOM developed a Sustainable report for the Four Seasons Resort Puglia in Ostuni, a luxury resort with 150 Rooms and 30 luxury family residences, in a 53 hectares' area with an investment of more than 110 million €. The report aimed to describe the Social, Environmental and Economic advantages of the project in the Puglia region using an international recognized GRI standard.]

Services: Project assessment; GRI Sandard metrics comparison; stakeholder mapping; social, environmental and economic advantages identification; areas of improvement identification; reporting.



SUSTAINABILITY

CORPORATE MANAGEMENT AND PERFORMANCE

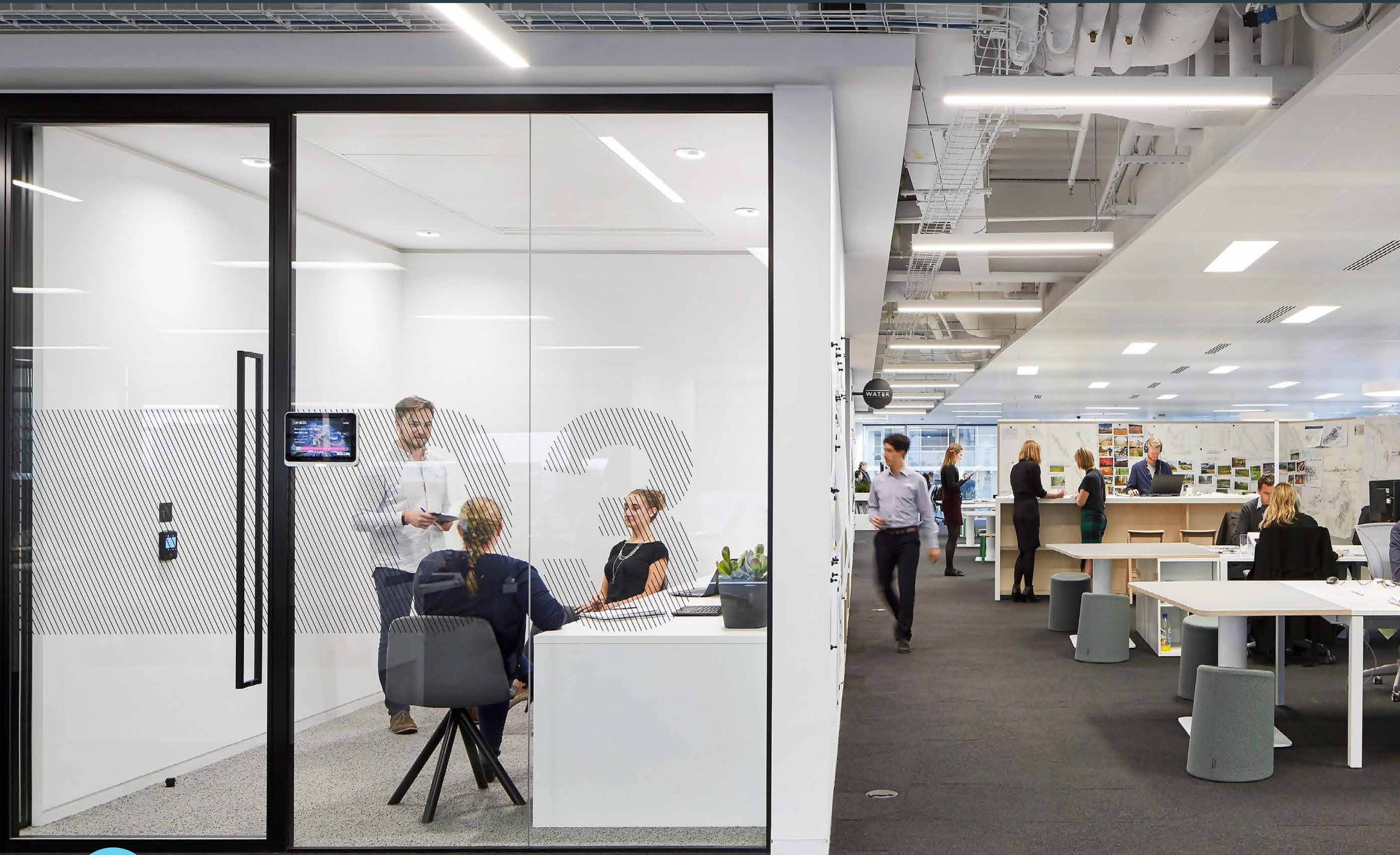


CORPORATE MANAGEMENT AND PERFORMANCE

Our clients face complex business challenges. At AECOM, we provide a wide range of services aimed to help our clients improve performance whilst driving for innovation and excellence.

Integrating new companies, exploring emerging geographies and developing new projects is a new challenge and brings new opportunities to our clients. Environmental and sustainability factors play an important role in successful business management and strategies and need to be incorporated into decision-making processes and ongoing operations. AECOM provides a range of services that support our clients' needs, exploit opportunities and help minimize risks. Our collaborative Technical Practice Network enables our global community of 9,000 environmental professionals to share expertise and best practices to solve our clients' challenges.





REPRESENTATIVE SERVICES

- Corporate social responsibility (risk assessments, strategy, stakeholder engagement)
- Reporting
- IFC/ equator principles / Green bonds
- Management systems (environment, health and safety, energy, greenhouse gases, biodiversity, etc.)
- Implementation of management and reporting tools



**CORPORATE MANAGEMENT
AND PERFORMANCE**

GENERALI REAL ESTATE

**Italy, Spain, France, Belgium,
Germany, Poland, Czech Republic,
Austria, Switzerland**

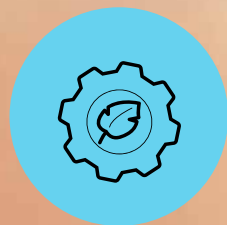
Integrated management system related to the management of processes of design, construction, redevelopment and operational management of the real estate portfolio applicable to countries within Continental Europe.

Services: "Process assessment", GMP GAP analysis, Corporate governance design, risk assessment methodology procedure, operational procedure, surveillance procedure, training courses, audit and management review.



**CORPORATE MANAGEMENT
AND PERFORMANCE**

IMPACT ASSESSMENT



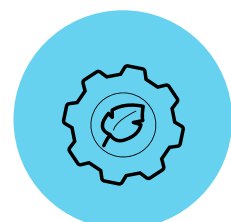
IMPACT ASSESSMENT

Our multi-disciplinary team in Italy has vast experience in Environmental and Social impact assessments, as well as Strategic environmental assessments, supporting our clients in their international new developments.

Potential impacts on natural and human environments for new projects are subject to increasing scrutiny by governments and population. Rigorous assessments, essential to understand and mitigate these impacts and avoid issues with regulators and stakeholders, are implemented according to Italian regulations (D.Lgs. 152/2006 – Title 3rd and 3rd bis) and International Good Management Practices.

Our team's wide experience, supported by our global presence and technical groups, provides a perfect combination of a consistent high-quality approach and local knowledge.

From conception to execution, we provide mitigation solutions and key technical studies, assisting the client during approval processes and stakeholder engagement.

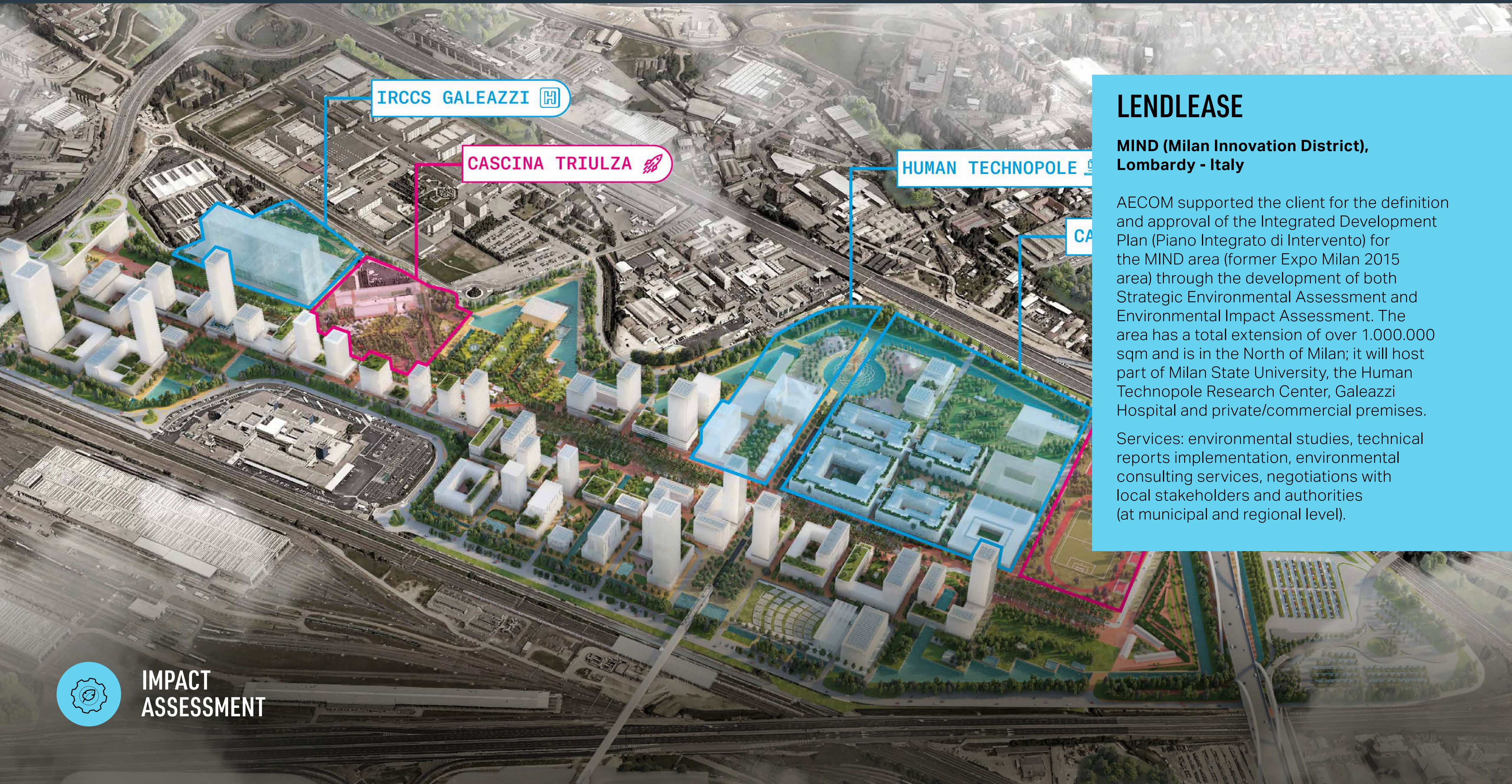




IMPACT ASSESSMENT

REPRESENTATIVE SERVICES

- Mitigation measures during design
- Environmental, Health and Social Impact Assessment
- Baseline studies / field surveys (marine & terrestrial)
- Environmental supervision monitoring and surveillance
- Acoustics (monitoring and noise assessment)
- Air emissions (monitoring, modelling)
- Waste / wastewater management plans
- Evaluation of ecosystem services
- Biodiversity action plans
- Landscape studies
- Restoration plans
- Stakeholder engagement
- Resettlement action plans



IRCCS GALEAZZI

CASCINA TRIULZA

HUMAN TECHNOPOLE

LENDLEASE

**MIND (Milan Innovation District),
Lombardy - Italy**

AECOM supported the client for the definition and approval of the Integrated Development Plan (Piano Integrato di Intervento) for the MIND area (former Expo Milan 2015 area) through the development of both Strategic Environmental Assessment and Environmental Impact Assessment. The area has a total extension of over 1.000.000 sqm and is in the North of Milan; it will host part of Milan State University, the Human Technopole Research Center, Galeazzi Hospital and private/commercial premises.

Services: environmental studies, technical reports implementation, environmental consulting services, negotiations with local stakeholders and authorities (at municipal and regional level).



**IMPACT
ASSESSMENT**

DUE DILIGENCE AND EHS AUDITS



DUE DILIGENCE AND EHS AUDITS

With environmental, health and safety professionals strategically located worldwide, we have the best resources to successfully provide country-specific regulatory, linguistic and cultural support.

Selling, investing in or re-financing an activity or property, whether a single asset or a portfolio, involves the management and transfer of risks, some of them associated to environmental liabilities and compliance issues.

AECOM has an unparalleled track record in providing transactional support services to worldwide clients. The European team advises on the environmental and engineering aspects of over 200 transactions annually, ranging from major corporate transactions to individual purchases. We help transaction players make informed business decisions that significantly reduce costs and liabilities and add business value.





REPRESENTATIVE SERVICES

- Environmental, health and safety and technical due diligence
- Environmental, social and governance (ESG) due diligence
- Technical support during merger and acquisition processes
- Identification of environmental liabilities and non-compliance issues
- Virtual data-room
- Risk evaluation, ranking and cost estimates
- Monte Carlo modelling for large portfolios
- Environmental liability minimization and management (pre and post-acquisition)
- Management of legacy sites
- Phase II investigations (soil and groundwater, asbestos, etc.)



**DUE DILIGENCE
AND EHS AUDITS**

CONFIDENTIAL

Italy

Health & safety due diligence assessment for 23 sites operating with biomass renewable energy such as biomethane and waste reuse.

Environmental studies aimed to ascertain the feasibility to upgrade existing plants with carbon capture module systems.

Services: Due diligence, compliance, environmental constrains limitation and liability evaluation.



DUE DILIGENCE
AND EHS AUDITS



BIODIVERSITY STUDIES

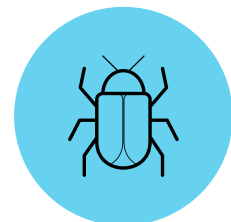


BIODIVERSITY STUDIES

The world is experiencing a massive biodiversity decline. It is increasingly important to combine business and competitiveness with the protection of biodiversity. Yet, while the private sector is part of the problem, it is also part of the solution.

AECOM offers customers scientific support for the development of their business in a sustainable way, through a series of services that also serve as an input to their decision making.

Biodiversity is an essential prerequisite for the adjustment of ecosystems and adaptation to environmental changes. Biodiversity is particularly high in the Mediterranean countries, and Italy hosts many animals and plants unique in Europe and in the world.





REPRESENTATIVE SERVICES

- Assessment of plans and projects that may have an impact on sites belonging to the Natura 2000 network
- Floristic, vegetational and faunistic studies
- Vegetation and fauna monitoring
- Management plans



**BIODIVERSITY
STUDIES**

CONFIDENTIAL CLIENT IN THE ELECTRICITY SECTOR

Milan, Italy

Tracciolino trail Moledana-Codera in the vicinity of the hydroelectric plant of Campo.

Services: Biodiversity investigations



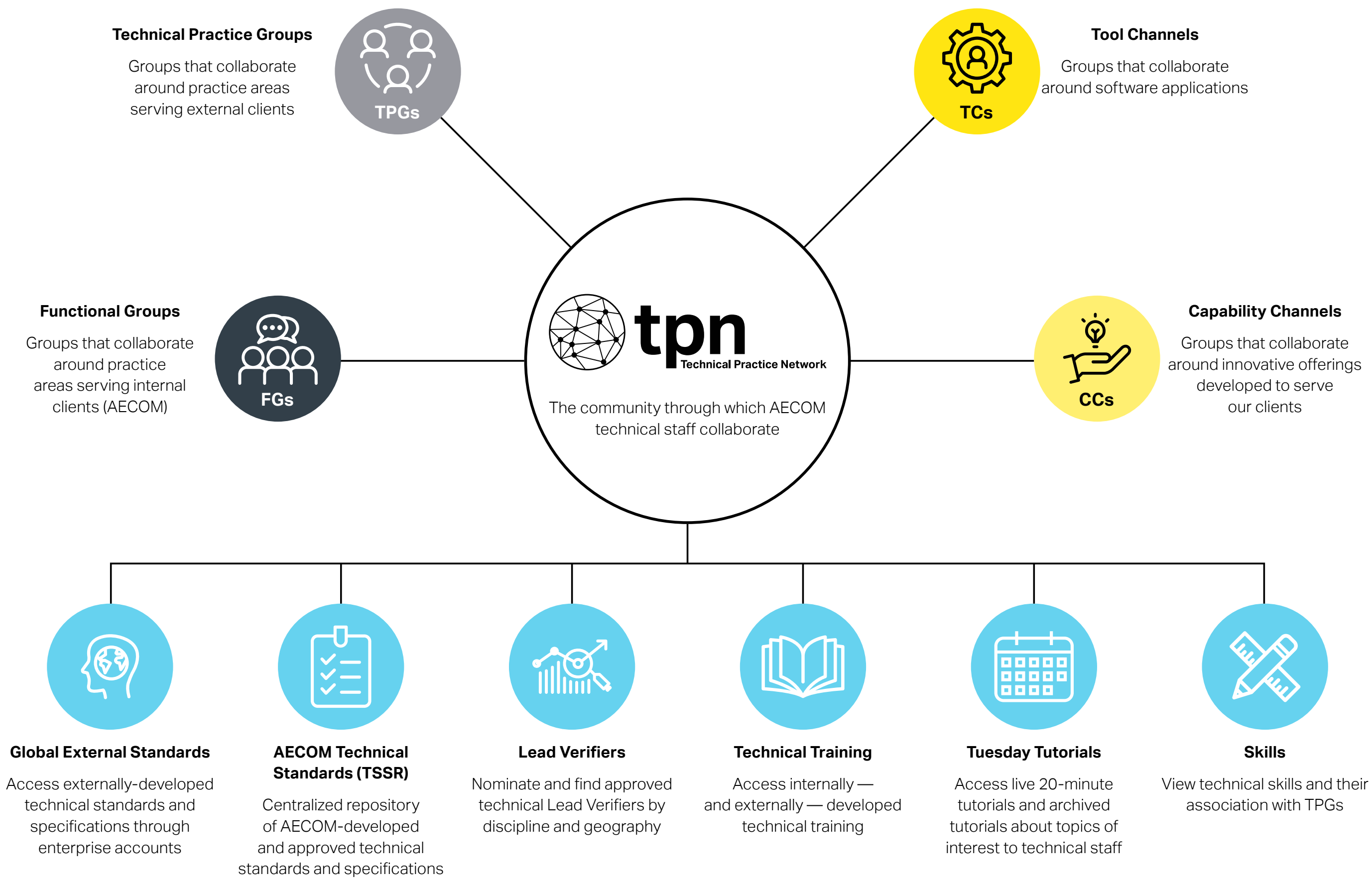
AECOM'S APPROACH TO PROJECTS AND CORPORATE SUPPORT

AECOM'S APPROACH TO PROJECTS AND CORPORATE SUPPORT

Critical to the success of its projects is the assignment of key personnel with suitable skills and experience. Building on our extensive experience and large team of experts and field technicians, we can provide technical advices on the full range of services related to each phase of the project.

AECOM's goal is to bring innovation and technical excellence to projects by connecting and empowering AECOM's technical talent. The Technical Practice Network is the foundation for achieving Technical Excellence at AECOM. It provides access to the people, tools and resources across the company. Technical Practice Groups (focused working areas) and associated Yammer groups (discussion forums) facilitate collaboration, networking, sharing tools, documents, and resources.

Clients in every region of the world turn to AECOM to solve their toughest environmental challenges: with over 9,000 environmental staff worldwide. AECOM can provide Global Technical Experts and Innovative Solutions.



HEALTH AND SAFETY

HEALTH AND SAFETY

AECOM is committed to exceptional levels of performance in safeguarding people and the environment as one of our Core Values, and a key to our success. We demand continuous improvement in our journey toward a “zero” incident culture, where everyone is committed to safety, health and environmental excellence. In recognition of the right to a safe and healthy working environment, keeping our people and stakeholders safe is our most important measure of success. We strive to be the beacon of safety excellence in the industries and global communities in which we work. The commitment to safeguard by the leadership, management and employees of AECOM provides the foundation for a safe workplace, operational excellence and long-term business success.



A blurred office scene with people moving, overlaid with the text "OUR TEAM". The background shows a modern office interior with wood-paneled walls, a large window on the left, and a reception desk on the right. A woman in a grey blazer and black pants is walking towards the right, and a man in a grey shirt is walking towards the left. A potted plant with purple flowers sits on the reception desk. The floor is covered in a grey and white patterned carpet. The text "OUR TEAM" is written in large, white, sans-serif capital letters in the center of the image.

OUR TEAM

OUR TEAM

By means of a wide environmental team made of Engineers and Scientists we can offer our clients over 30 years of unparalleled project assessment, design and engineering solutions in all environment markets both locally and internationally.

Our team has over 70 environmental specialists and is one of the top environmental consulting firms in Italy, working from our office in Milan. We successfully carry out over 100 environmental projects every year, locally and internationally, making our public and private clients achieve environmental excellence. The key sectors we serve include Industrial (Oil & Gas, Energy, Manufacturing, Chemical and Pharmaceutical), Real Estate and Infrastructure.

Our integrated delivery model allows us to solve the most complex environmental challenges throughout the project life cycle: planning, permitting, design and engineering, development, operation, decommissioning, remediation, restoration and reuse. Our daily practice is fully compliant with the best quality standards (OHSAS 18001, ISO 9001, 14001), which enable us to offer sustainable and optimal solutions to our clients.



ABOUT AECOM

AECOM is the world's premier infrastructure consulting firm, delivering professional services throughout the project lifecycle – from planning, design and engineering to program and construction management. On projects spanning transportation, buildings, water, energy and the environment, our public- and private-sector clients trust us to solve their most complex challenges. Our teams are driven by a common purpose to deliver a better world through our unrivaled technical expertise and innovation, a culture of equity, diversity and inclusion, and a commitment to environmental, social and governance priorities. AECOM is a Fortune 500 firm and its Professional Services business had revenue of \$13.2 billion in fiscal year 2020. See how we deliver what others can only imagine at aecom.com and [@AECOM](https://twitter.com/AECOM).

Contact

Claudio Maione

Operation Director, Environmental

T +39 348 600 3976

aecom.com