

Collaborative Research into the New Generation of Asphalt Surfacing

Project Number: 60484040

January 2016

Prepared for:

**Highways England, MPA and
Eurobitume UK**

REVISION SCHEDULE

Rev	Date	Details	Prepared by	Reviewed by	Approved by
1	January 2016	Notes from the project workshop	Jessica Tuck Chibuzor Ojum	Daru Widyatmoko	Paul Edwards

This submission is for the sole and confidential use of the addressee. Any technical information provided by AECOM Infrastructure & Environment UK Limited in this submission should be used only for the purpose of enabling the addressee to consider the merits of the submission as a whole and the work for which this submission is intended. AECOM Infrastructure & Environment UK Limited accepts no liability for any use of this submission other than by the addressee and only for the above purpose.

URS is now an AECOM company. Whilst AECOM and URS have become one company, contracting entities (all of which are now wholly owned by AECOM) and lines of communication currently remain the same unless specifically agreed or communicated otherwise.

Copyright

© This Report is the copyright of AECOM Infrastructure & Environment UK Limited. Any unauthorised reproduction or usage by any person other than the addressee is strictly prohibited.

AECOM Infrastructure & Environment UK Limited

Scott House
Alençon Link
Basingstoke
Hampshire
RG21 7PP

Tel 01256 310200
Fax 01256 310201

TABLE OF CONTENTS

1	INTRODUCTION	3
2	AGENDA.....	3
3	FACILITATORS AND ATTENDEES.....	3
4	NOTES FROM THE WORKSHOP	6
4.1	Streams of ideas	6
4.2	Top ideas from each group	8
5	EVALUATION OF IDEAS	10
5.1	Overview of key concepts	11
5.1.1	<i>Dual layer</i>	11
5.1.2	<i>Imprinted texture</i>	11
5.1.3	<i>Market Additives</i>	11
5.1.4	<i>AC Surface Course</i>	12
5.1.5	<i>Blue sky additives</i>	12
5.1.6	<i>Coatings</i>	12
5.1.7	<i>Modular / prefabricated roads</i>	12
5.1.8	<i>Other ideas</i>	12
6	ACTION PLAN	12
6.1	Analysis of the key concepts.....	12
6.2	The next stage of work.....	17

1 INTRODUCTION

On 2 June, a one-day workshop on Future Surfacing was organised by AECOM (formerly URS), as a part of a Collaborative Research Project funded by Highways England, Mineral Products Associations and Eurobitume UK. The aim of this project is to review bitumen based surfacing materials, drawing upon international experience, with the view to developing a new asphalt surfacing material which has significantly enhanced durability, whilst balancing other performance demands such as noise and safety.

The workshop took place on 2nd June 2015, from 9am to 2pm, at Lea Marston Hotel in Warwickshire.

In this workshop, the participants were challenged with the following question: *“What are your ideas for the next generation of asphalt surfacing for use on Highways England’s Network that will increase durability without compromising the current performance?”*

The reference to *the current performance* is Clause 942 of the Specification for Highway Works; specifically the new material must not generate louder noise than the current thin surface course system, and it must remain safe meeting the surface texture and/or wet friction requirements.

This brief report presents notes and photographs taken from the workshop and summarises key finding (Sections 2 to 5).

Outcomes from discussions during the workshop evaluation exercise, and immediately post the workshop, between the steering committees and the research team are also presented (Section 6). This includes high level actions for the next stage of the research program.

2 AGENDA

The following outline agenda and process was used during the workshop.

Time	Activity
09:00 – 09:30	Registration & Coffee
09:30 – 09:45	Welcome & Housekeeping
09:45 – 10:00	Project Overview & Context of this part of the project
10:00 – 10:10	Ice Breaker
10:10 – 11:00	Brainstorm – what & where are the opportunities to develop the next generation of surfacing to be used on Highways England’s Network
11:00 – 11:15	Coffee
11:15 – 12:30	Feedback by each group – 10 minutes
12:30 – 13:30	Lunch
13:30 – 14:00	Feedback on the next steps
14:00 – 14:10	Thank you & Close

3 FACILITATORS AND ATTENDEES

The workshop was attended by over 40 experts and professionals from UK, France and Germany with various backgrounds; including consultants, contractors, road authorities, asset managers, academics and industry associations. Affiliations of the attendees are illustrated in Figure 1 and the detailed list is presented in Appendix A.



Figure 1: Affiliations of the attendees

The main facilitator for this workshop was Emma Wigham from Atkins, supported by Jessica Tuck and Sam Nicklin (both from AECOM).

Participants were distributed into six discussion tables, and discussion on each table was facilitated by a member of the Collaborative Research team: Malcolm Simms – MPA (Table 1), Paul Sanders – Highways England (Table 2), Daru Widyatmoko – AECOM (Table 3), Mike Lancaster – Eurobitume UK (Table 4), Tim Smith – MPA (Table 5) and Gary Schofield – Eurobitume UK (Table 6).

Donna James (Highways England), Paul Edwards (AECOM), Paul Phillips (MPA) and Chris Southwell (Eurobitume UK) were the four panel members who were tasked to summarise feedbacks from the participants at the end of the workshop session.

Snapshot photographs of the workshop are presented in Figures 2 to 4.



Figure 2: Table discussion and brainstorming



Figure 3: Feedback session by each group



Figure 4: Feedback session by panel members

4 NOTES FROM THE WORKSHOP

The workshop generated enthusiastic discussions, debate and innovative ideas. These ideas range from those which may be graded as potential for immediate implementation, to a much more outer space futuristic concept.


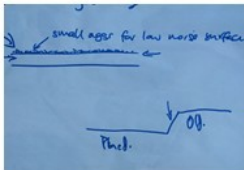
For completeness, all the unfiltered ideas from the brainstorming session are presented in Section 4. The “top” ideas volunteered from each group were then ranked and refined (within the group, but supported by facilitators). These are listed for completeness in Section 4.2.

4.1 Streams of ideas

The following slides capture “typed up” flip charts populated during the initial brainstorming session within each group (table of between 5 and 7 people).

Noise <ul style="list-style-type: none"> A/C / SMA Hybrid HRA – Size of chips Porous - Twin <ul style="list-style-type: none"> Design Negative texture Aggregate Size Durability <ul style="list-style-type: none"> Components & Additives Design (inc. Pavement) Predictable failure Monitoring Installation Design Process <ul style="list-style-type: none"> Mixture Pavement 	Safety <ul style="list-style-type: none"> Both user and worker Construction practice <ul style="list-style-type: none"> Components Design Sustainability <ul style="list-style-type: none"> Long life ‘Green’ Recycled content Recyclability Locally sourced Reduced temperature 	Cost – Whole Life <ul style="list-style-type: none"> To include binder course Workmanship <ul style="list-style-type: none"> Access Competence Traffic Management Compaction Approval Process <ul style="list-style-type: none"> Cost Time Uncontrollable Factors <ul style="list-style-type: none"> Climate – Extremes Traffic 	High Binder / Low Voids <ul style="list-style-type: none"> Type (mod / un-mod) Properties Performance-based Specification <ul style="list-style-type: none"> Durability Noise Defm. Resistance Minimum b/c Grading Voids Skid resistance In-situ measurable? Installation <ul style="list-style-type: none"> Thickness Experience Traffic Management Availability / Access Sub-strate 	Aggregates <ul style="list-style-type: none"> Type (quality / artificial) Grading (shape) Source (sands) 	Fillers and Fibres Self - Healing Accelerated Testing Echelon Twin Layer
---	--	---	---	--	---

High Binder / Low Voids


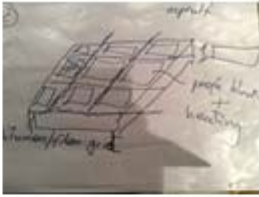
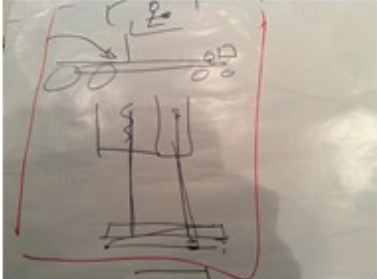
<p>Prefabricated roads</p> <ul style="list-style-type: none"> On rolls (carpet on a stable base) As slabs <p>• Velcro / artificial grass</p> <p>Monolithic Construction</p> <p>Graduated not layered structure</p> <p>Very thin top surfacing (high performance)</p> <p>Mix Design</p> <p>Nano material fillers</p> <p>Aramid / carbon fibre reinforcement in binder</p> <p>Waste glass fibre / container glass</p> <p>Bonding Layers</p> <p>Void replacement (remove air)</p> <ul style="list-style-type: none"> Super hydrophobic <p>Reduce ageing rate (rubber)</p>	<p>Replace bitumen with polymer</p> <ul style="list-style-type: none"> Plant based polymers Rubber Thermoset Thermoplastic <p>Joint Fillers</p> <p>Remove aggregate from surface</p> <p>Combine concrete and asphalt</p> <p>Self-healing</p> <ul style="list-style-type: none"> Automated Activated externally <ul style="list-style-type: none"> Microwave Infrared <p>Generate electricity through vehicle action</p> <p>Recycled materials</p> <ul style="list-style-type: none"> Quantify performance before re-use Recycle forever <p>Re-thinking durability</p> <ul style="list-style-type: none"> Lasts 1/10 time Costs 1/100 <p>Continuous re-surface</p> <p>Speed layering – Forth Bridge Principle</p> <p>Material improves with traffic – vehicles repair road, via vibration</p> <p>Temporary hardening with rainfall / temperature</p> <p>Moving traffic from lane</p> <p>Noise cancelling</p> <ul style="list-style-type: none"> Textured surface for given frequency
<p>Robot pavers / resurfacing</p> <ul style="list-style-type: none"> Quality Time of day / year Weather At night <p>Crack repair automated (RACA)</p> <p>Rubber road and rubber wheels</p> <p>Seed like surfacing</p> <ul style="list-style-type: none"> Or 'salt' 'Growing' Self crystallising <p>Spray-on preservatives (paint)</p> <p>Conservation of asphalt</p> <p>Increase traffic speed</p> <p>Mollusc teeth surface</p> <p>Mushroom Spore</p> <p>Sharks teeth / skin</p> <p>Hover cars / trucks</p> <p>Interface lubricant</p> <ul style="list-style-type: none"> 'Air cushion' 'Fluid cushion' 	<p>Noise</p> <ul style="list-style-type: none"> Rutting Regularity / ride quality Screed Chips <ul style="list-style-type: none"> Application Availability Do we need them? Size <ul style="list-style-type: none"> Smaller, less fretting, lower noise Can we still achieve negative texture? Dense bitumen Low voids (not connected) Thick Compactable Tolerant Joints High stone contents Challenge surface texture <p>Quite HRA ?</p> <p>Rut resistance?</p> <ul style="list-style-type: none"> Tyres PMB <p>Glass Fibre</p> <ul style="list-style-type: none"> Polymer waste Astro recycling Polyfibre
<p>Over Chip HRA</p> <ul style="list-style-type: none"> 18 kg/m² Negative texture effect Quieter 14mm or 10mm chips SBS PMB modified Chip loss <ul style="list-style-type: none"> Embed deeper Shape important <ul style="list-style-type: none"> Cubical Flakiness Alternative coatings <ul style="list-style-type: none"> Adhesion agent <ul style="list-style-type: none"> Promote adhesion Reduce loss PMB <p>Crossfall</p> <p>Spray</p> <ul style="list-style-type: none"> Unsure if spray is increased <p>Less material equipment options</p> <ul style="list-style-type: none"> Develop new chipper <ul style="list-style-type: none"> Chipper teeth to embed hips Continuity <ul style="list-style-type: none"> Young people Skills Installation competency <ul style="list-style-type: none"> Training Supervision Procurement <ul style="list-style-type: none"> Enable investment <ul style="list-style-type: none"> Visibility Whole life cost Supply chain commitment Relationship between client & supply chain Mix Design <ul style="list-style-type: none"> Design process Material selection 	<p>Dense</p> <ul style="list-style-type: none"> Generating noise (26mm) Absorbing noise (P.A)  <p>Patterned Roller</p> <p>Dense (high psv fine aggregates) product with a 'printed' surface</p> <p>What does the fine aggregates do?</p> <p>EME!</p> <p>Can you design and control an asphalt concrete for surface course – adequate texture</p>
<p>How we tie in to existing? – Whatever solution we choose</p> <p>Site preparation and planning needs to be an integral part of the process</p> <p>Operational 'upskilling'</p>  <p>Laid in a single layer</p> <p>Small aggregate for low noise surfacing</p> <p>Dense receiving course</p> <p>How do we align aggregate particles – special dual pavers</p>	<p>Additives!!</p> <ul style="list-style-type: none"> Adhesion agents Epoxy? – can we add a curing accelerator? Limestone filler Warm-mix additives – wider working window

Durability <ul style="list-style-type: none"> Keep water out <ul style="list-style-type: none"> All Levels <ul style="list-style-type: none"> Interface Material Surface Marshall Asphalt? <ul style="list-style-type: none"> 'Grooving' / texture (Highly) modified binders Mitigate if water does ingress – binder / aggregate interface <ul style="list-style-type: none"> Dual layering paving <ul style="list-style-type: none"> Between b/c and s/c laid at same time Echelon joint Cons – Voids / Dense <ul style="list-style-type: none"> Interface between s/c and b/c Nom. Aggregate Minimum – 4 to 10mm Thickness – 25 to 70 mm Aggregate 'packing' / compactability ← Be more prescriptive to design an asphalt – agreed framework Gyratory compare in LMB Joint failures <ul style="list-style-type: none"> Handability / ease of compaction 	Skid Resistance <ul style="list-style-type: none"> Small nominal size Tyre interface Waterproofing asphalt <ul style="list-style-type: none"> Sprayed on system? After surfacing How low can texture depths go? <ul style="list-style-type: none"> High speed Shedding water HRA Type material without chips <ul style="list-style-type: none"> Use a dual system, skid resistant Add aggregates / grit into surface – process PMB <ul style="list-style-type: none"> Adhesion agents to minimise impact of water ingress 	Aim Maximise durability Issue Water, water, water Mechanical performance Constraints Noise Skid resistance Recyclability Aggregate balance
---	---	---

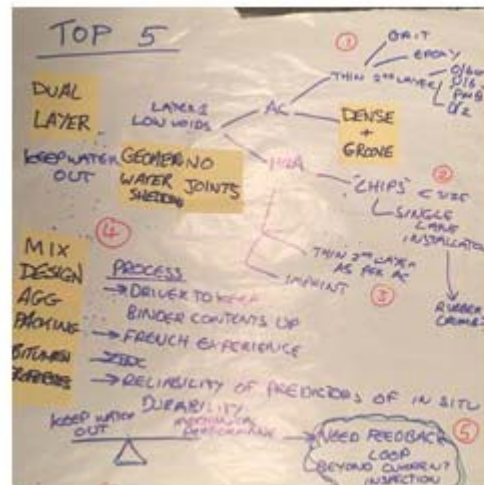
4.2 Top ideas from each group

The following section captures the “top” ideas (as determined within each group), derived from the initial thought process and discussions detailed in Section 4.1.

Group 1	<ol style="list-style-type: none"> Composite material <ol style="list-style-type: none"> Densiphalt Coated porous aggregates Twin layer T/S Example. Grass Grid Binder Capsules (condition response) Pre-packed ('mastic) Artificial / manufactured aggregate shape Binder replacement epoxy Road on a Roll Sacrificial utlac (maintenance routines)
Group 2	<ol style="list-style-type: none"> Prefabricated Roads <ol style="list-style-type: none"> Carpet on (Velcro) stable base Build in features, road markings, signs etc. Continuous resurfacing <ol style="list-style-type: none"> Lay at speed Rethinking durability 1/10 time, 1/100 cost Temporary hardening <ol style="list-style-type: none"> Material improves with traffic / rainfall / temperature Self – Healing <ol style="list-style-type: none"> Automatic (micro balloons) Activated externally (microwave / infrared) Replace Bitumen – Polymer <ol style="list-style-type: none"> Rubber Thermoplastic Thermoset Seed-like surface <ol style="list-style-type: none"> 'Grit' road crystallises and compacted by traffic ('the grit that grows' !) Generate cushion to reduce wear by reducing contact with road

<p>Group 3</p>	<div style="display: flex; justify-content: space-around;"> <div style="text-align: center;">  <p>1. Plastic crate and flowable / self-compacting asphalt</p> </div> <div style="text-align: center;">  <p>2. Bitumen / fibre grid</p> </div> </div> <p>3. Flowable asphalt</p> <p>4. Closed-graded binder rich pmb and adhesion agent to reduce permeability Anti-ageing treatment (pre close binder)</p> <p>5. Super micro-surfacing (improved emulsion technology)</p>
<p>Group 4</p>	<ol style="list-style-type: none"> 1. Glass Fibre <ol style="list-style-type: none"> i. Polymer waste ii. Recycling iii. Polyfibre 2. Over chip HRA with 14mm or 10mm chips 3. Use of an adhesion agent (PMB) <ol style="list-style-type: none"> i. Promote adhesion ii. Reduce loss 4. Installation Competency <ol style="list-style-type: none"> i. Training ii. Skills iii. Supervision 5. Procurement <ol style="list-style-type: none"> i. Whole life cost <div style="text-align: center;">  </div> <p>6. New Chipper, to over chip</p>
<p>Group 5</p>	<ol style="list-style-type: none"> 1. Dense fine high PSV mix imprinted pattern 2. Well designed asphalt concrete 3. Additives <ol style="list-style-type: none"> i. Epoxy ii. Adhesion agents iii. Limestone filler iv. Hot warm mix v. Wider workability window 4. Twin layer <ol style="list-style-type: none"> i. Dense receiving layer with 6mm surface 5. Site Operations <ol style="list-style-type: none"> i. Angle out joint ii. Skills and training iii. Shuttle buggy – eliminating cold load ends iv. Preparation and planning <div style="float: right;"> <ul style="list-style-type: none"> • Durability • Do we understand NOISE? • Skid resistance </div>

Group 6



6. Magic Coatings

- Seasonal waterproof spray
- Use gritter fleet?

Other ideas

- Bond coat
- Adhesion agents
- Self healing

5 EVALUATION OF IDEAS

Ideas presented in the workshop were collated into broad concept groups and an initial high level evaluation of each broad concept was undertaken against durability, ease of implementation and likely relative cost. This coarse evaluation was primarily undertaken by the panel, to produce a quick visual feedback on initial thoughts to the workshop audience. Figure 5 presents an overview of the initial evaluation, with ease of implementation increasing up the y axis and durability increasing towards the right of the x axis. The size of the circle represents an estimate of relative cost. Some concepts are shown as clouds due to a high degree of uncertainty on how they could be valued or ranked on the day. The initial output was used to indicate the potentially most promising concept(s) in the project timescale, which are those shown towards the top right of the chart.

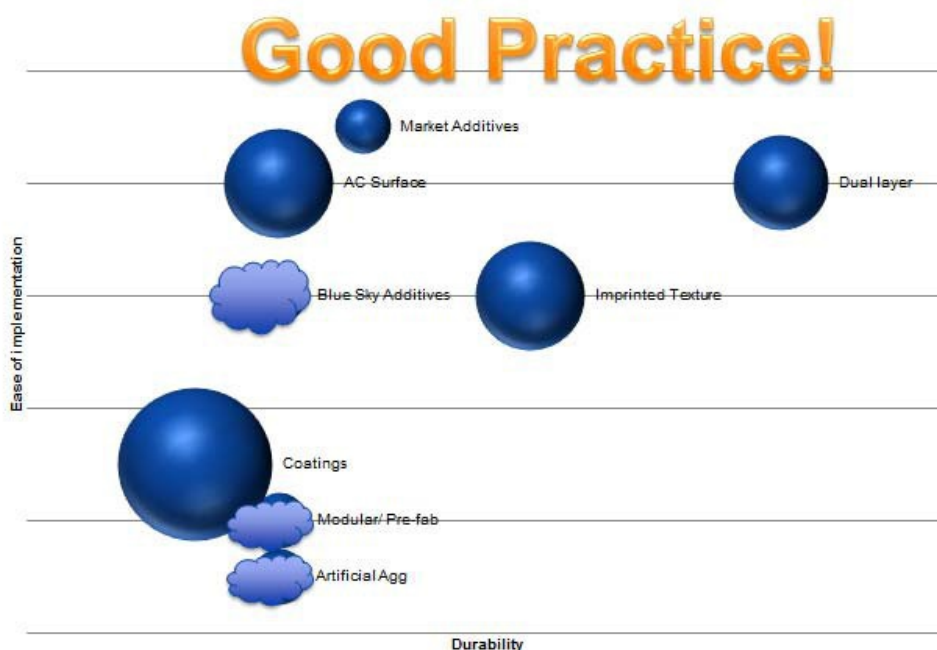


Figure 5: Summarised concepts

Several ideas generated at the workshop related to the category of “good practice” (shown across the top of Figure 5). It was agreed, that whatever the ideas taken forward, that they should keep these concepts in mind.

Key themes discussed under the broad banner of ‘good practice’ include:-

- Improvements to mix design process
- Better understanding of aggregate packing
- Improving workmanship / operational upskilling / training
- Procurement and ‘risk sharing’ / investment in plant and equipment / visibility of programme
- Better feedback loop on performance
- Substrate condition
- Bond between layers
- Access / traffic management / full road closure – improved safety and joint workmanship / enable echelon paving
- Relationship with supply chain
- Temperature control (use of shuttle buggies)

5.1 Overview of key concepts

Further detailed discussion was generated during the workshop round table discussions of the output shown in Figure 5. These are summarised in the following subsections.

5.1.1 Dual layer

‘Dual layer’ is furthest towards the top right of the chart and covers a range of ideas. It was agreed during the workshop that a more appropriate name for the concept is required.

The concept broadly comprises a low void, dense body of material with surface characteristics (such as texture, skid and noise) applied at the top of the layer.

Ideas for achieving this include:-

- Over chipped Hot Rolled Asphalt (HRA) type material, creating effectively a negative texture, with 6, 10 or 14 mm chippings embedded (example given on M6 Junction 10 in 1996). Use Polymer Modified Binder (PMB).
- Dual layer with chippings applied.
- Dual layer surfacing with grit applied (on top or embedded).
- Dense body with surface dressing / bonded solution.
- Composite material, such as grouted macadam.

5.1.2 Imprinted texture

As above, this concept comprises a dense material body only this time the surface characteristics are achieved by applying mega texture to the surface.

- Flowable dense asphalt course with mega-texture imprinted.
- Groove or imprinted texture of dense material.
- Design to achieve noise cancelling properties.

5.1.3 Market Additives

Improve durability of existing (or new) asphalt designs/mixtures via the use of:

- Adhesion agents
- Rejuvenators
- Pavement life extenders

5.1.4 AC Surface Course

This concept comprises optimising the design process to achieve durable asphalt concrete (AC) with desired surface characteristics.

- Design and control AC surface course
- Consider Enrobé à Module Élevé (EME) design approach for AC
- EME could offer required characteristics – optimise for surface course application

5.1.5 Blue sky additives

This concept includes blue sky ideas for resilient asphalt that responds to the environmental conditions.

- Self-healing additive / bitumen capsules
- Temperature hardening additives
- Externally activated self-healing additives (microwave / infrared)

5.1.6 Coatings

'Magic coatings' were discussed as a blue sky idea.

- Seed like surface – road crystallises and is compacted by traffic 'grit that grows'

5.1.7 Modular / prefabricated roads

Prefabricated or modular road constructions were discussed by a number of groups. Ideas include:

- 'Road on a roll'
- Slab installation
- Use of Velcro / artificial grass
- Use of plastic crates with flowable asphalt infill, or use a bitumen/fibre based grid

5.1.8 Other ideas

Other ideas included the following concepts:

- Continuous resurfacing (the Forth Bridge principle): design cheap and low cost surfacing and repair, and continuously resurface the network.
- Use glass fibre or a waste source such as recycled astroturf, or polymer waste as a source of fibres to incorporate into the asphalt mixture – increase stability and reduce deformation.

6 ACTION PLAN**6.1 Analysis of the key concepts**

Amongst the key concepts gathered during the workshop, the "dual layer" approach was considered a practical idea which could be trialled within the current project timeframe. This approach was; therefore, explored further immediately post the workshop, prior to discussion with the project steering committee. The following section details this work.

There are a number of ways to produce the "dual layer" as illustrate in Figure 6. These approaches are discussed further as follow:

- a) Conventional two stage installation involving dense asphalt concrete treated with surface dressing has been used in the past; the dense asphalt concrete can provide durability and the surface dressing provides safety requirements. However this installation method is not suitable for application in SRN due to the very high traffic level and work restrictions.
- b) Current design principle of Stone Mastic Asphalt (SMA) system with two target volumetric composition within a single layer, specifically 1/3rd of the upper layer thickness should be relatively permeable to provide texture and spray reduction, with air voids around 6%, whilst the remaining 2/3rd of the lower layer thickness should be dense and impermeable. However, this principle does not always work with proprietary thin surfacing (TS) as there were many cases where TS was

relatively permeable to the full layer thickness and consequently more prone to moisture induced damage. Nevertheless there is a room to improve the current specification by:

- 1) Introducing a more-guided mix design procedure, to improve the structure of aggregate packing and composition within the mixture to reproduce the principle of having two target volumetric compositions within a single layer;
- 2) Adapting the principle of in-line paving or compact asphalt to produce two different grades of SMA, an ultra-thin permeable SMA (UTSMA) on the upper side feed and a dense impermeable SMA (DSMA) on the lower feed.
- c) Improving the current technology to install HRA with embedded heavy application of 10mm chipping, by integrating the chipping application as a part of the laying and compaction process.
- d) Machine laid flowable asphalt simultaneously treated with imprints or grooves. Flowable asphalt may be designed to the family of gussasphalt or mastic asphalt.

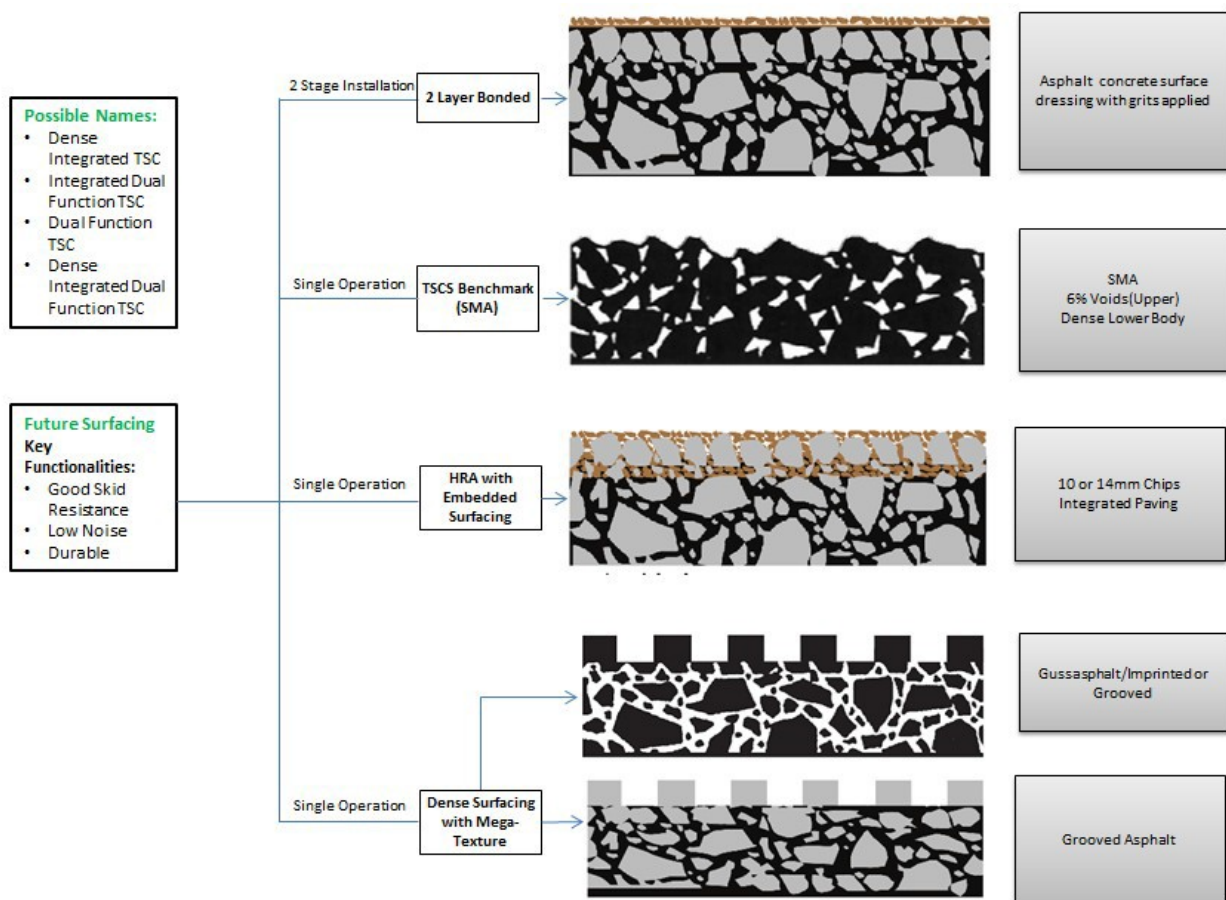


Figure 6: Some “dual layer” approaches

The construction plants which may be considered for adaptation under Option b.2:

Inline Pave

This involves paving the upper (UTSMA) and lower (DSMA) courses in immediate succession hot on hot. The mobile feeder supplies in succession asphalt materials to both the upper and lower course hoppers. The paver places the lower course material which is compacted with a high compaction screed which facilitates the possibility of the paver for the upper course to travel on the lower course layer. An illustration is shown in Figure 7.

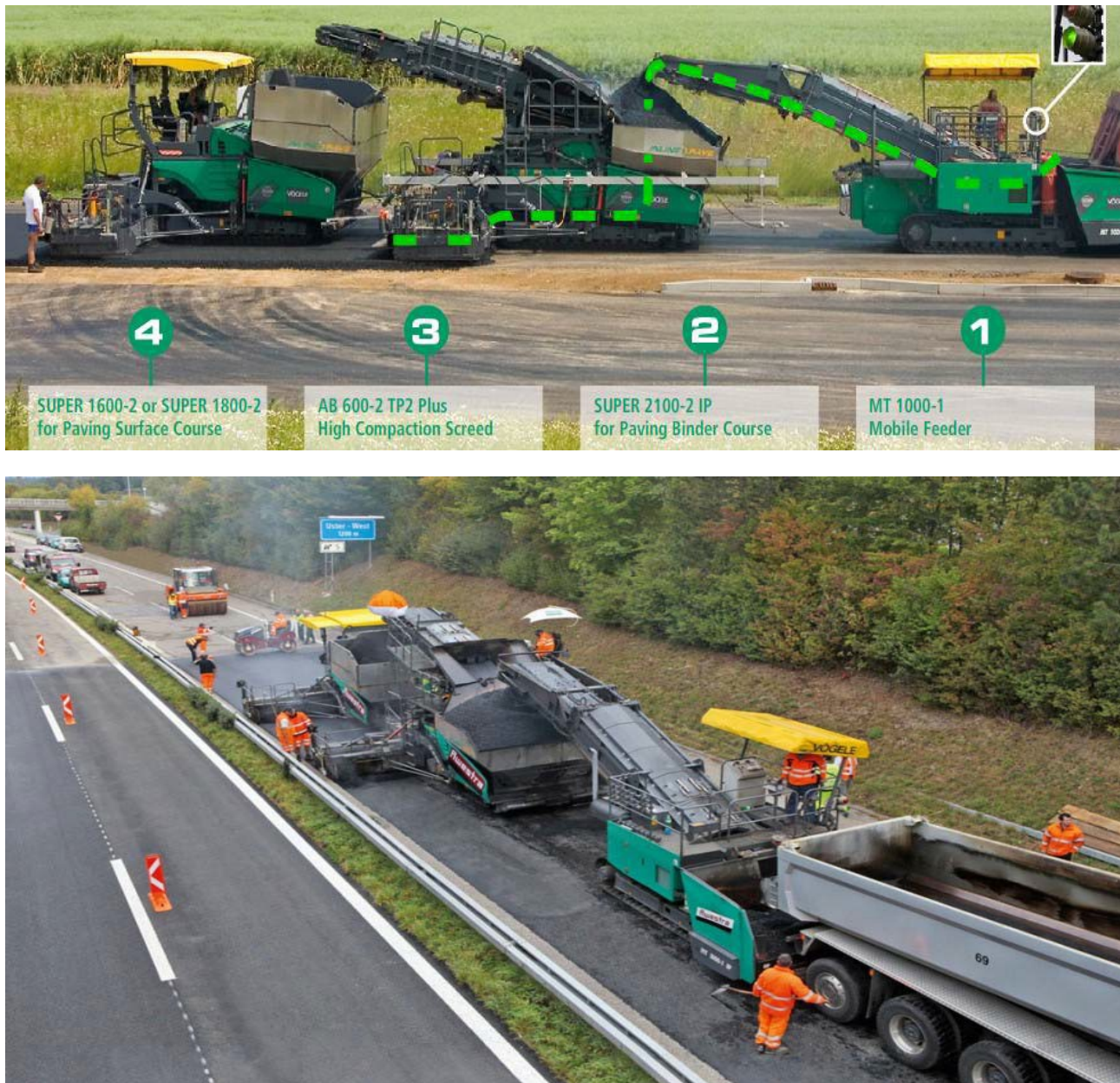


Figure 7: Inline Pave setup (top – side view; bottom – elevated view)

Very high pre-compaction of the lower course prevents the material mixing with that of the upper course in immediate succession at the required temperature (hot on hot) and application rate which can be paved in a single pass. Inline pavers permit continuous flow of traffic during paving which is an advantage.

Compact Asphalt

Compact asphalt paving method also lays the lower and upper course in one work process hot on hot having the added benefit that no tack coat is required in between the two layers and providing superior interlocking which improves the durability of pavement in comparison with the conventional asphalt laying method. An illustration is shown in Figure 8.

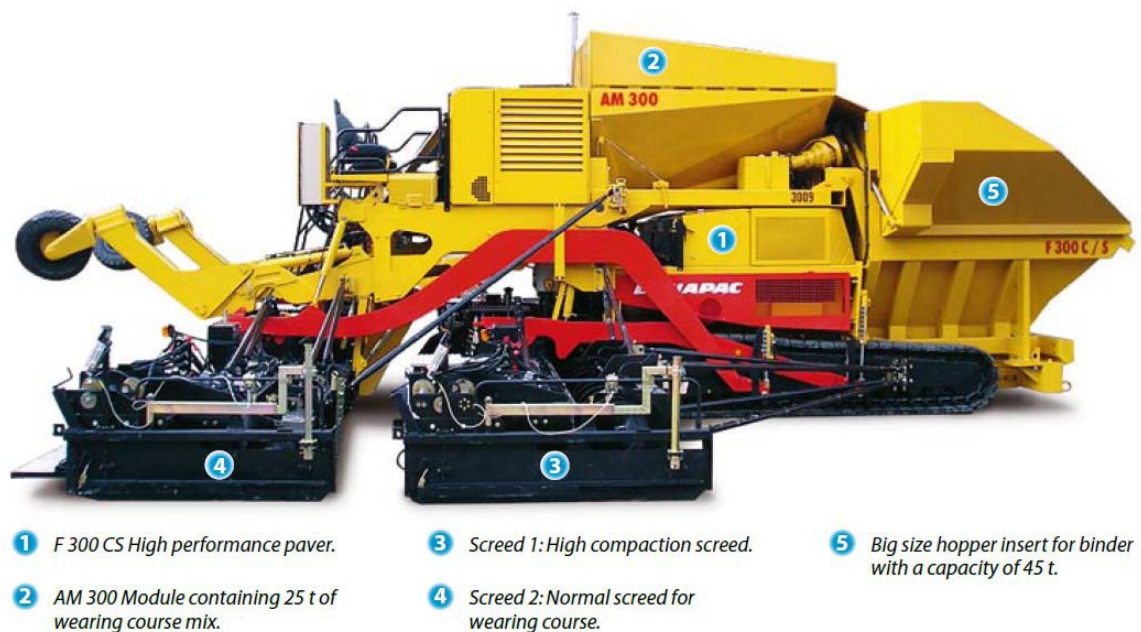


Figure 8: Compact Asphalt setup

The mobile feeder machine which is capable of feeding 27 tons in 35 seconds is used to feed both the lower and upper course hoppers. The top two layers can then be laid in one process continuously hot on hot.

The construction plant which may be considered for adaptation under Option d is illustrated in Figure 9.



Figure 9: Machine laid gussphalt

Imprint can be laid in a number of ways and patterns as illustrated in Figure 10 and grooves can be cut as shown in Figure 11.



Figure 10: Pavement Imprints



Figure 11: Grooving on asphalt pavement

Considering the shortlisted approaches and material options, the following broad points were agreed by the steering committee during the project meeting in July 2016:

- 1) Surface dressing and twin layer approach was discounted on the basis that:
 - Mixing and delivery capacity for two separate materials is a challenge
 - Concern over bond failure and long term durability vs other options
- 2) Grooved and imprinted surfacing was discounted as they may not be the most durable option.
- 3) HRA type material with embedded surface (smaller chip size), where the chippings effectively embed deeper into the body to create an aggregate matrix was believed to be a concept worth progressing further. HRA with high rate of chipping have worked well for local authorities and there was a good case study on M6.
- 4) 'Dual layer' – a single operation surfacing which creates a dense body with surface characteristics, possibly based on AC type material designed using EME principles is considered to be worth progressing. This can be approach by introducing a more-guided mix design procedure, to improve the structure of aggregate packing and composition within the mixture to reproduce the principle of having two target volumetric compositions within a single layer.

6.2 The next stage of work

For the next stage of the work, three sets of materials have been proposed:

- 1) HRA incorporating polymer modified binder with embedded heavy application of 10mm chipping, aiming to create additional aggregate body through embedment of chippings.
- 2) 'Dual layer', incorporating polymer modified binder and 10mm nominal size aggregate.
- 3) An agreed sample of proprietary thin surface course for use as a control set.

Each of the three material sets will be subjected to the following minimum suite of testing during mix design and plant trial:

Tests	Mix design	Plant trial
Visual assessment of vertical section (cut face) of sample	X	
Mixture volumetrics (air voids)	X	X
Workability to EN 12697-31	X	
Determination of surface texture to EN 13036-1	X	X
Resistance to moisture damage, measured by indirect tensile strength test to EN 12697-12	X	X
Resistance to deformation, measured by using wheel track testing (small device, in air) to EN 12697-22	X	X
Determination of skid resistance by Pendulum Test Value (EN 13036-4)	X	X
Determination of noise by acoustic impedance tube method (ASTM E1050)		X

Further details and actions from the Workshop were discussed and agreed at the following project steering committee meeting on the 1st July 2015.