

Middle East

**We are AECOM.
Built to deliver
a better world.**



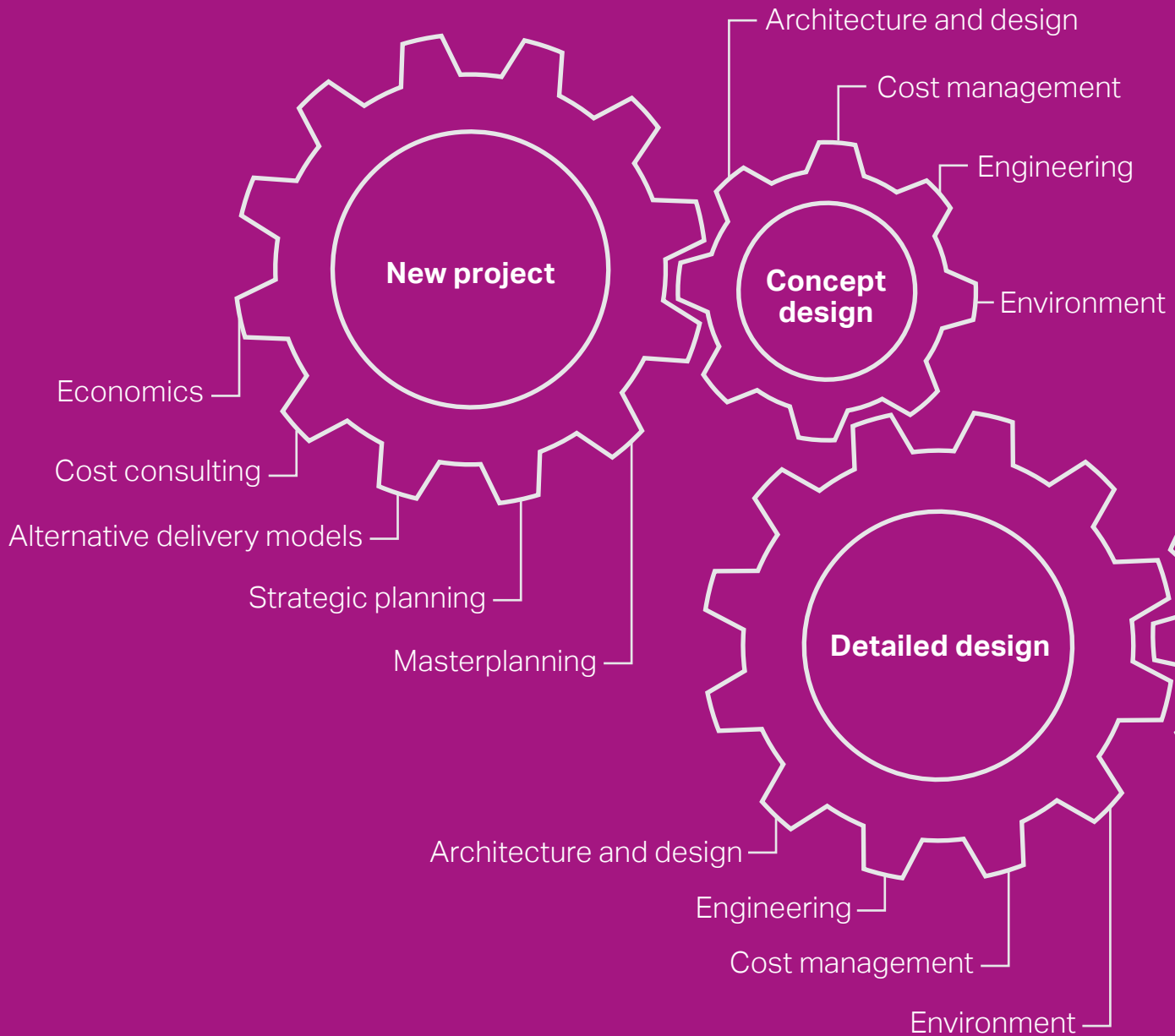


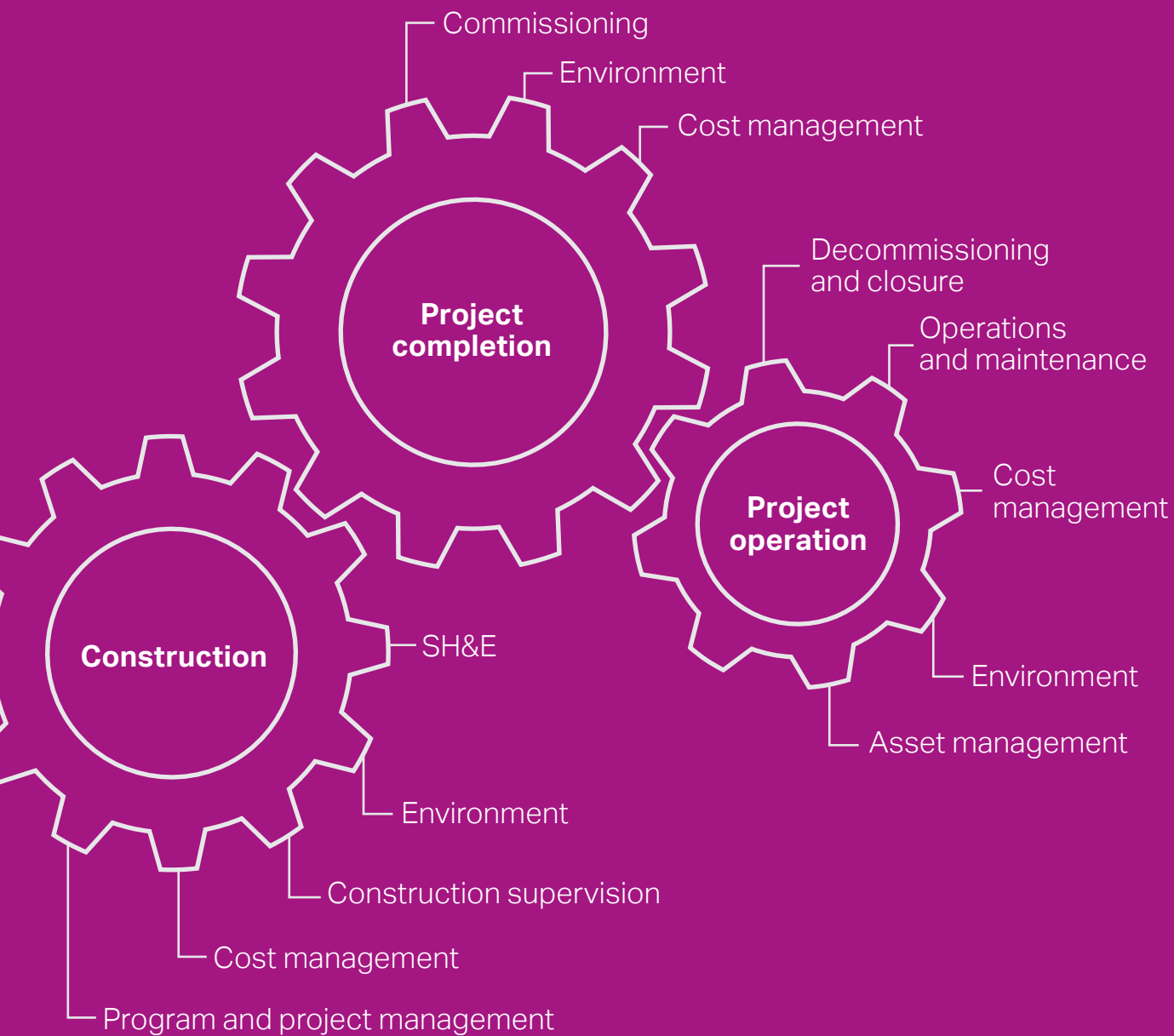
Governments and organizations rely on us to anticipate and address their complex challenges and **deliver inspirational solutions** for their schemes. Shaping cities. Delivering clean water and energy. Building iconic skyscrapers. Connecting people and economies with roads, bridges, tunnels and transit systems.

We collaborate to connect knowledge and experience across practices, markets and geographies — **daring and dreaming** to re-imagine what can be achieved. Our expertise spans all phases of the development life cycle — design, build, finance, operate and manage.

Our integrated approach delivers operational excellence, flawless execution and **transformational outcomes** for clients, communities and the planet.

Our integrated offer enables us to clarify complexity on projects of any scale and add value through all stages of the project lifecycle.





Globally

152+ countries
7 continents
\$18.2 billion revenue

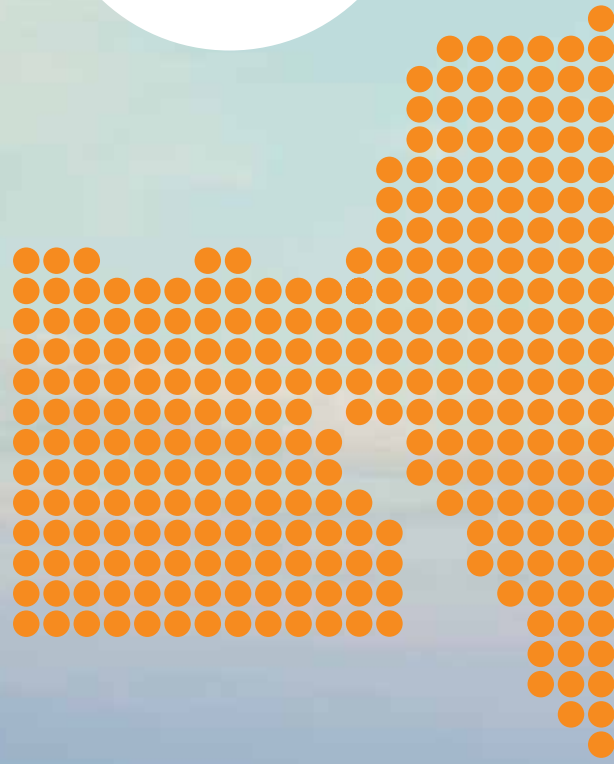
Locally

60 years experience
4k+ people
Iconic projects
across all sectors

Kuwait

Projects include:

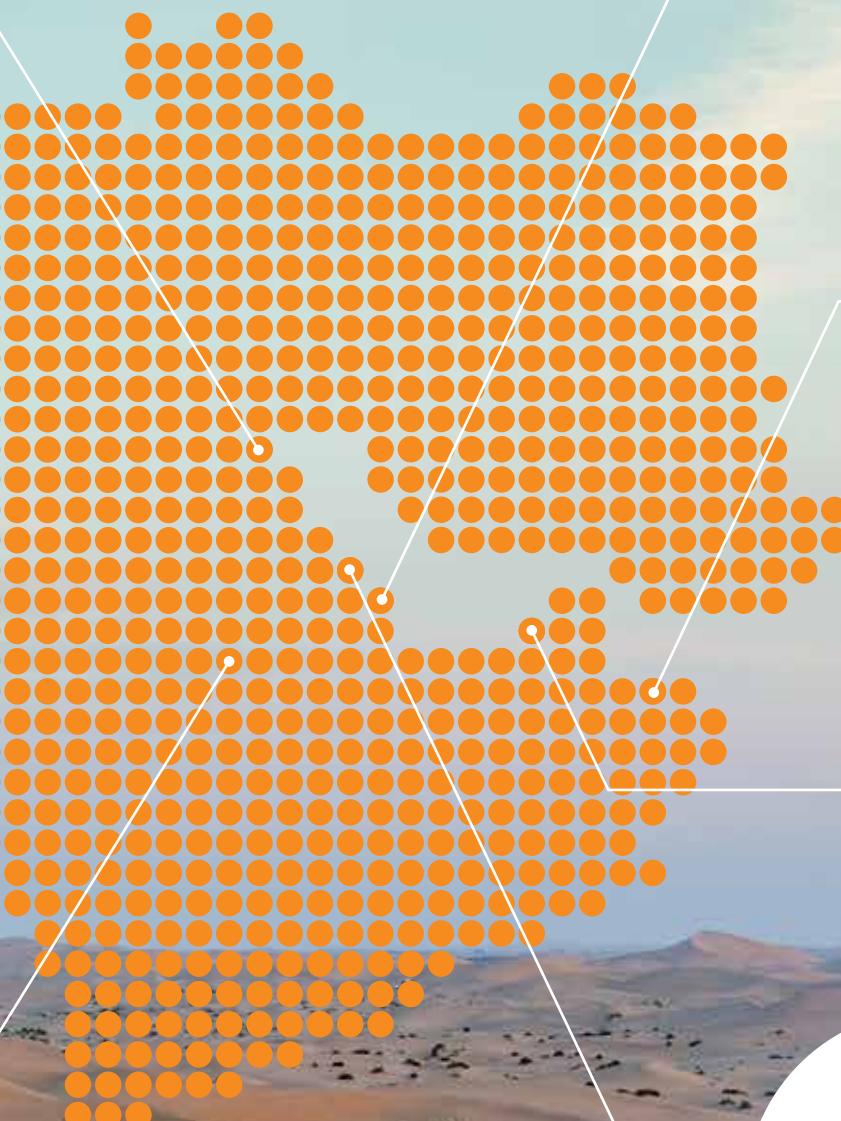
Mubarak Al Kabeer Port,
Central Bank of Kuwait,
Kuwait International
Airport – T2



Kingdom of Saudi Arabia

Projects include:

Jeddah Strategic Plans,
King Khalid Medical City, King
Khalid International Airport,
King Abdullah Port,
Jeddah Metro



Qatar

Projects include:

Al Wakrah Stadium,
Hamad Port, Doha Oasis,
IDRIS, Tornado Tower,
Al Waab City,
Doha Expressway

Oman

Projects include:

Mall of Oman,
Oman Convention
& Exhibition Centre,
Al Ansab STP Phase II,
Duqm Frontier Town
Phase II

**United
Arab Emirates**

Projects include:

Al Khail Road, Cleveland
Clinic Abu Dhabi, DAMAC
Heights, Etihad Rail, Etihad
Towers, Midfield Terminal
Complex, Zayed
University

Bahrain

Projects include:

Al Madina Al Shamaliya,
Diyar Al Muharraq,
North Manama Causeway,
Ahlia University





Safety first

We are committed to maintaining a safe, healthy workplace for our employees and contractors, and delivering safe projects that benefit our clients.

Through strict project procedures, innovative tools and frequent communications, we are dedicated to preventing injuries to people and damage to facilities, property, equipment and the environment.

Safety for Life

Safety for Life is AECOM's comprehensive internal program that drives our employees toward the company's commitment to achieving zero work-related injuries and/or illnesses; preventing damage to property and the environment; and maintaining an environmentally friendly and sustainable workplace.

Deep rooted in this program, our Culture of Caring sets an expectation for each employee, contractor and business partner to take personal responsibility for keeping their colleagues, and others associated with our work, safe.

Whether located on a project site, in the office or at home, we embrace safety as a lifestyle choice by maintaining essential safety procedures and behaviors everywhere we go.

Our projects

Multi-award winning iconic towers on Abu Dhabi corniche.

An integral component to Abu Dhabi's skyline, Etihad Towers has become one of the city's most recognizable buildings.

The building consists of five elegant towers. The four-level parking garage accommodates more than 3,000 cars. The hotel, Jumeirah at Etihad Towers, is a 280-meter tall luxury hotel and recipient of the World's Leading New Hotel for 2011 accolade and *Construction Week's* GCC Project of the Year award in 2011.

Our global team of professionals contributed to the project's success with specialists from Hong Kong providing structural engineering design and architects in the UAE completing the engineering design, detailed architecture design and construction supervision services.

The services provided also included the preparation of the full structural and MEP construction documents.

This project sets the vision of a new style of development in Abu Dhabi that combines contemporary design, luxurious accommodation and facilities, and top class offices, retail and food and beverage outlets.

AECOM services:

- Construction documentation package (architectural, structural & MEP) during the design development stage.
- Construction supervision during the construction stage.





Connected expertise

Water quality is one of the biggest challenges in Abu Dhabi, with tap water having a higher than normal chlorine content. Tasked with completing a comprehensive study of the water quality in the Al Raha Beach area our team developed a mathematical equation creating a direct relationship between the consumers and the chlorine injected at tie-in points considering different variables such as temperature, flow, velocity, residual chlorine and the amount of air entered into the system.

Al Raha Beach Development

Abu Dhabi, UAE

One of the most prestigious projects in Abu Dhabi, the Al Raha Beach Development has totally transformed the western approach to the city. With eight kilometers of water frontage it was designed to be the Great Arabian Water City and home to 120,000 people. This iconic development provides some of the finest waterfront communities in the United Arab Emirates.

Over a period of nine years, AECOM provided fully integrated civil infrastructure services including transportation, energy, water, and landscape design, marine and environmental services.

The iconic project won the National Transport Project of the Year award at the *MEED* Quality Awards in 2015.

AECOM services:

Integrated civil infrastructure design including:

- Transportation
- Energy
- Water
- Landscape
- Marine and environmental services

New Port Project

Qatar

Clarifying complexity

When you think of building the world's largest 'greenfield' port project, complex is one of the first words to come to mind. With complexity comes the numbers. A quay measuring 26 kilometers long and 17 meters deep, the capacity to handle 1.7 million tons of cargo a year, 58,000 precast blocks, 130 million cubic meters of excavated material, and a 16,000 strong workforce to make this vision a reality.



Undertaken by the State of Qatar, the USD 7 billion New Port Project is currently the world's largest 'greenfield' port project under development. Construction commenced in 2011 with the first commercial ships arriving in 2016.

The port is designed to act as a catalyst for Qatar's economic growth and trading industry, with its

completion critical for importing the materials required to construct the facilities for the 2022 FIFA World Cup Qatar.

The New Port Project comprises three developments: Hamad Port, a new 4.5 square kilometer base for the Qatar Emiri Naval Forces, and a canal for a new economic zone located to the north of the port.

AECOM services:

AECOM has been retained since 2008 to provide comprehensive program management services.



Transformational outcomes

We consider outcomes that transform entire communities. This project saw our team respond to extraordinary circumstances, including a tripling population and the aftermath of a catastrophic storm. We created a plan to reshape and revive the city into an innovative hub.



Jeddah Strategic Plans

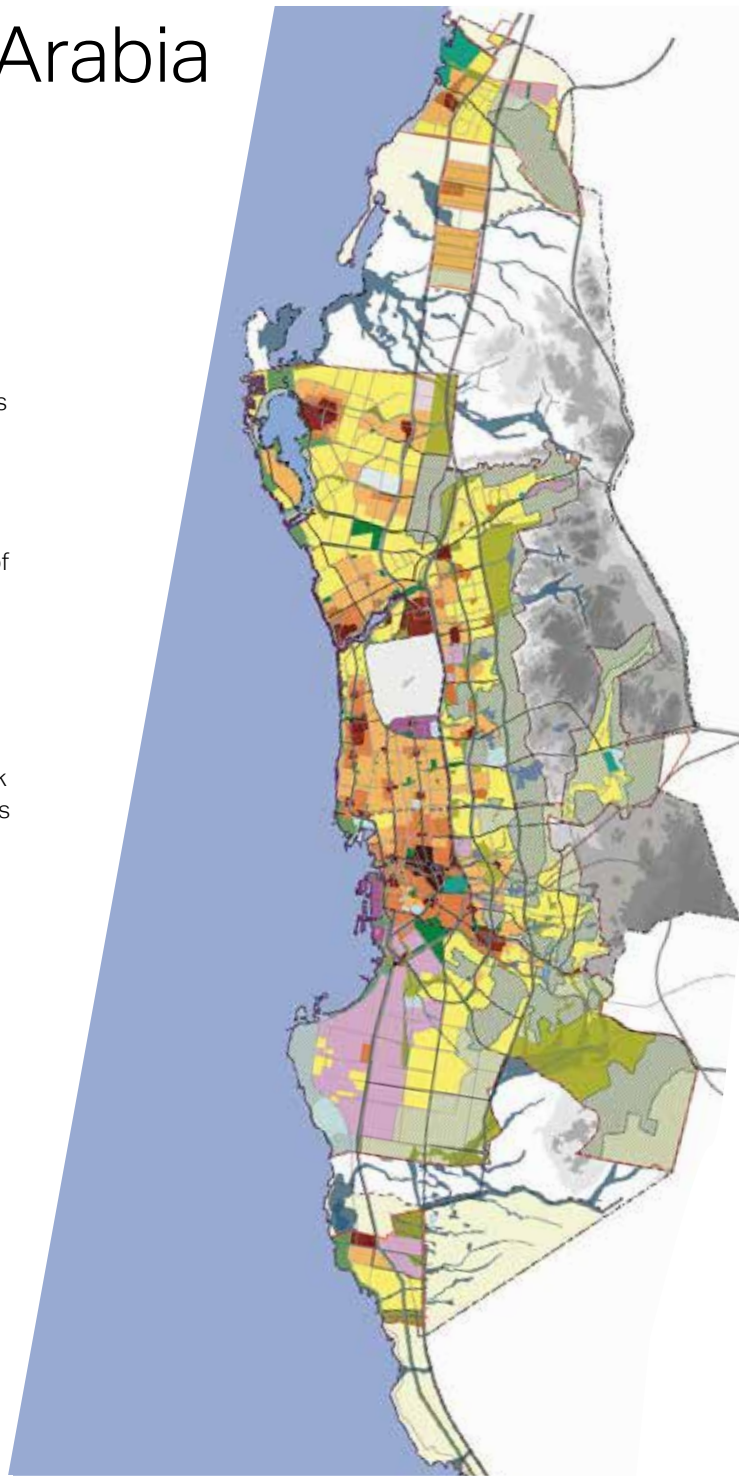
Kingdom of Saudi Arabia

As the principal gateway to Makkah and Medinah, Jeddah is a key urban hub in the Middle East. Over recent decades it has experienced unprecedented population growth, rising from 50,000 residents in the 1940s to nearly three million today. This extraordinary rate of change has resulted in fragmented development. The repercussions of a catastrophic storm in 2010 added to the challenges of developing the city.

Against this background comes the Jeddah Strategic Plans, a framework for sustainable and balanced future growth. In partnership with the Jeddah Municipality, we delivered plans to redefine the city's future character, creating a series of well-connected centers and a network of quality open spaces, with improved access to amenities and transport. This project was on a huge scale and involved an unprecedented number of stakeholders to consult, critique and reach consensus on a new path forward for Jeddah.

AECOM services:

- Urban and spatial planning
- Landscape and public realm
- Infrastructure and utilities
- Strategic planning
- Environmental sustainability



Al Madina Al Shamaliya

Bahrain

The Ministry of Housing has engaged AECOM to provide masterplanning, detailed design and cost management services for this large project in the Kingdom of Bahrain.

Al Madina Al Shamaliya is a group of 10 reclaimed islands situated on the northern coastline, a few kilometers away from the city of Manama.

The development comprises residential accommodation with lifestyle, commercial and retail facilities to support the community.

AECOM is responsible for the full design of electrical power cables, street lighting, telecommunication network and a conceptual bridge design.

AECOM services:

- Concept and detailed masterplanning
- Architecture
- Cost management
- Infrastructure design



Midfield Terminal Complex

Abu Dhabi, UAE





AECOM is providing construction management services for the largest building in Abu Dhabi. Earmarked to become one of the region's most architecturally impressive structures, the new Midfield Terminal Building is being developed as an iconic gateway to Abu Dhabi for the projected growth of 40 million people per annum who will pass through the airport terminal by 2025.

Based to the west of Abu Dhabi, the mega-structure is rising from the ground in the midst of the still-functioning busy Abu Dhabi airport – a complex logistical challenge that the team is meeting head-on. AECOM is providing the technical expertise to transform the airport experience for millions of people in the UAE capital.


AECOM services:

- Construction management
- Construction supervision
- Cost management
- Contract management
- Sustainability



Orbital Highway

Doha, Qatar



The New Orbital Highway will provide 190 kilometers of new highway alignment traversing the State of Qatar from the southeast to the northwest. The project begins at the City of Mesaieed and terminates just south of Ras Laffan Industrial City. This new highway will provide a 14-lane cross section that will include separate truck lanes through the majority of the alignment and 22 multi-level interchanges.

The Orbital Highway will become nationally significant for the movement of people and goods around the country; it is designed to manage up to 1500 HGVs and 8,000 general traffic vehicles per hour in each direction. The Orbital Highway forms a vital part of the 2022 FIFA World Cup Qatar tournament preparations, as it will provide better connectivity to all stadiums around the country.

Through a separate Expressway Program contract, AECOM is providing design review and site supervision services for the four design-build contracts.

AECOM services:

- Design review
- Construction supervision

Kuwait Oil Company Air Quality

Kuwait

Since the Paris Agreement, the Kuwait Oil Company (KOC) has shown great commitment to reducing their greenhouse gases (GHGs), setting a target of 20 percent reduction by 2020.

With no existing national system in place to reduce emissions, AECOM has been developing a GHG reduction strategy for KOC that is being used across the entire country.

One of the largest air quality consultancy contracts ever awarded to a single company anywhere in the world, the five-year project involves several strategies to control emissions.

We are using satellite technology and advanced air quality monitoring techniques to pinpoint pollution 'hot spots' and monitor air pollution in real time across the country to determine the risk to humans.

We are also putting a GHG monitoring network and air management system in place and developing a nationwide regulatory permitting and compliance system.

The project goes further than air quality management by focusing on GHG emissions and carbon management, setting the standard for collaboration between oil companies and government agencies throughout the Gulf.

AECOM services:

- Air quality assessment and management







Tatweer Schools

Kingdom of Saudi Arabia

With the aim of revitalizing Saudi Arabia's educational system and enhancing its learning facilities, Tatweer Buildings Company (TBC) appointed AECOM to support the delivery of thousands of educational facilities across KSA.

The scope of the project comprises the construction of both primary and secondary schools in all 13 provinces.

We are providing program management (PMO), construction management, capability building training and concept design for the project, which is expected to be completed in 2018. We have set up a PMO for the client, are delivering the program strategy, an execution plan, and complete policies and procedures to establish the client's organizational structure, corporate and core business policies, as well as an operational framework.

Through the implementation of measures to track the progress of the project through on-site cameras, we have been able to establish an integrated dashboard and real-time monitoring of construction progress. Key project performance indicators are being tracked through the use of innovative software.

AECOM services:

- Program management
- Construction management
- Concept design
- Capability training

Middle East Consultant Awards 2016

Multi-discipline Consultant of the Year

MEED Quality Awards 2016 National and GCC Industrial Project of the Year

TALEX aluminium plant, KIZAD, Abu Dhabi, UAE

MEED Quality Awards 2016 National and GCC Rail Project of the Year

Etihad Rail, Abu Dhabi, UAE

ENR Awards 2015 Award of Merit for Rail

Etihad Rail Phase 1 Abu Dhabi, UAE

Construction Week Awards 2015

GCC Consultant of the Year

MEED Quality Awards 2015, National Transport of the Year Award

Al Raha Beach Development, Abu Dhabi, UAE

Financial Times

AECOM among Best Workplace

Ethisphere Institute

Named one of the World's Most Ethical Companies for 2011, 2012, 2013 and 2014

Fortune Magazine

Named one of the World's Most Admired Companies in 2015, 2016 and 2017

Arab Organisation for Social Responsibility

Golden Distinctive Trophy for Corporate Social Responsibility 2015

Military Friendly

18th on Top 100 Military Friendly employers list and seventh top employer in the defense industry



Etihad Rail, UAE, winner of the MEED GCC Rail Project of the Year Award 2016.



Ranked #1
in *Engineering News Record's*
"Top 500 Design Firms"
for the 8th consecutive year

Our services



Architecture

Interior design and strategy
Renovation and reuse
Sustainability

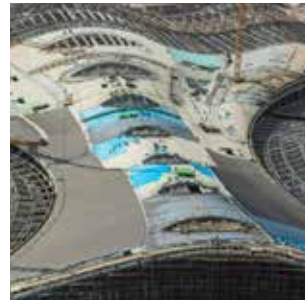


Building Engineering

Building structures
Mechanical, electrical and plumbing
Security and IT systems
Specialisms
Specialty structures
Sustainability
Technology solutions

Construction Services

Construction
Pre-construction
Program management
Project management
Sustainability
SH&E



Design + Planning

Landscape architecture
Masterplanning + urban design
Environmental and ecological



Economics

Economic development
Leisure economics
Redevelopment/regeneration
Sustainable economics
Transportation + infrastructure economics



Energy

Energy efficiency and carbon management
Energy planning, environmental and economics
Hydropower and dams
Thermal, geothermal and nuclear
Transmission and distribution
Wind and solar

Environment

- Air quality
- Alternative delivery solutions
- Corporate advisory and sustainability services
- Environmental, health and safety management
- Impact assessment and permitting
- Remediation services and site restoration
- Specialty and emerging technologies
- Waste services
- Water and natural resources



Program Management

- Delivery and contracting strategies
- Knowledge transfer and training
- Master scheduling
- Risk management
- Value engineering



Transportation

- Long-span bridges
- Tunnels
- Intelligent transportation systems (ITS)
- Tolling
- Transit-oriented development



Program, Cost, Consultancy

- Building surveying
- Cost management
- Capital allowances consulting
- Design management
- Development management
- Facilities management
- Health and safety consulting
- Legal support
- Management consulting
- Market intelligence
- People, place and performance consulting
- Project management
- Property consulting
- Specification consulting
- Sustainability consulting
- Valuation services
- Value and risk consulting

Water

- Wastewater treatment and re-use
- Flood and stormwater management
- Asset management and maintenance
- Water treatment and distribution systems
- Surface and groundwater assessments and supply
- Hydraulic and hydrological modelling
- Water resources planning
- Water transmission and distribution
- Reservoirs and dams



About AECOM

AECOM is built to deliver a better world. We design, build, finance and operate infrastructure assets for governments, businesses and organizations in more than 150 countries. As a fully integrated firm, we connect knowledge and experience across our global network of experts to help clients solve their most complex challenges. From high-performance buildings and infrastructure, to resilient communities and environments, to stable and secure nations, our work is transformative, differentiated and vital. A *Fortune 500* firm, AECOM had revenue of approximately \$18.2 billion during fiscal year 2017. See how we deliver what others can only imagine at aecom.com and [@AECOM](https://twitter.com/AECOM).