

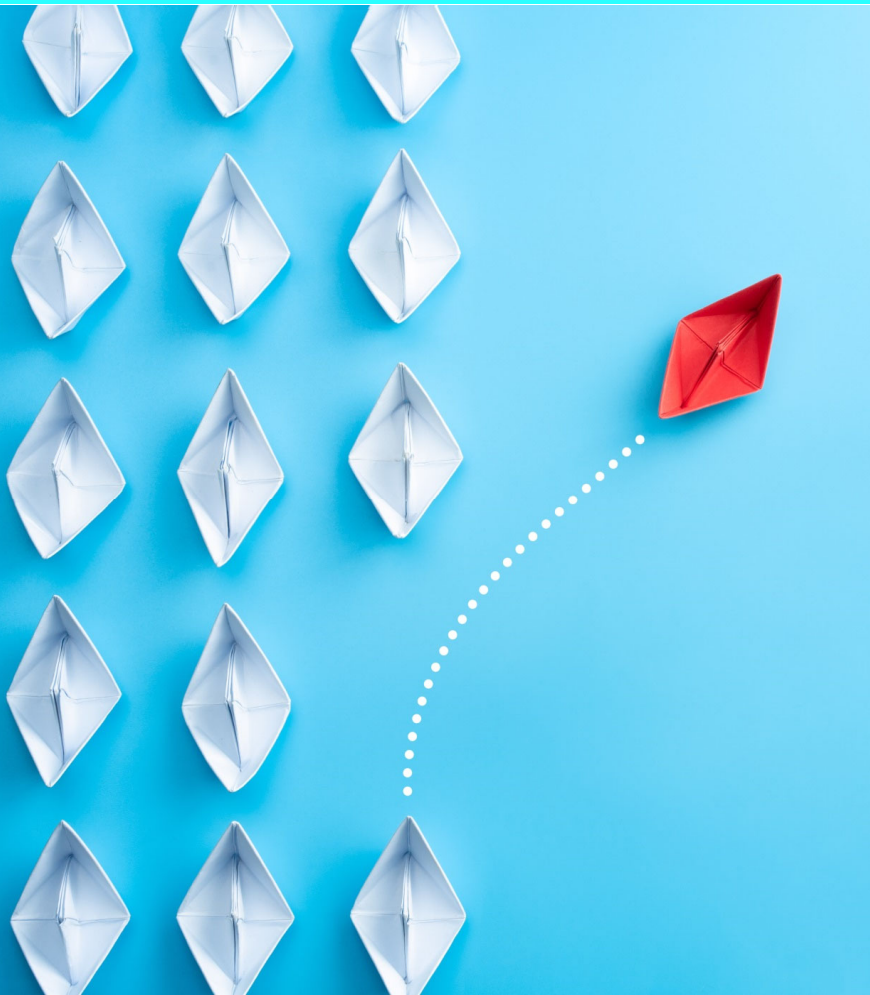
A row of offshore wind turbines in the ocean at sunset. The sky is a mix of blue, orange, and red, with the sun low on the horizon. The water is dark blue with some whitecaps. The turbines are white and extend into the distance.

AECOM Delivering a better world

Offshore Wind

 [aecom.com](https://www.aecom.com)

AECOM Differentiators



❖ **Comprehensive Capabilities**

Ability to support entire OSW lifecycle from Supply Chain through Commissioning

❖ **Local Capabilities**

Local Offices in Major Coastal hubs with local & state regulatory knowledge (e.g. NE, Mid-Atlantic, West, Gulf)

❖ **On & Offshore Environmental Studies**

Permitting multiple major offshore wind programs

❖ **Ports Infrastructure**

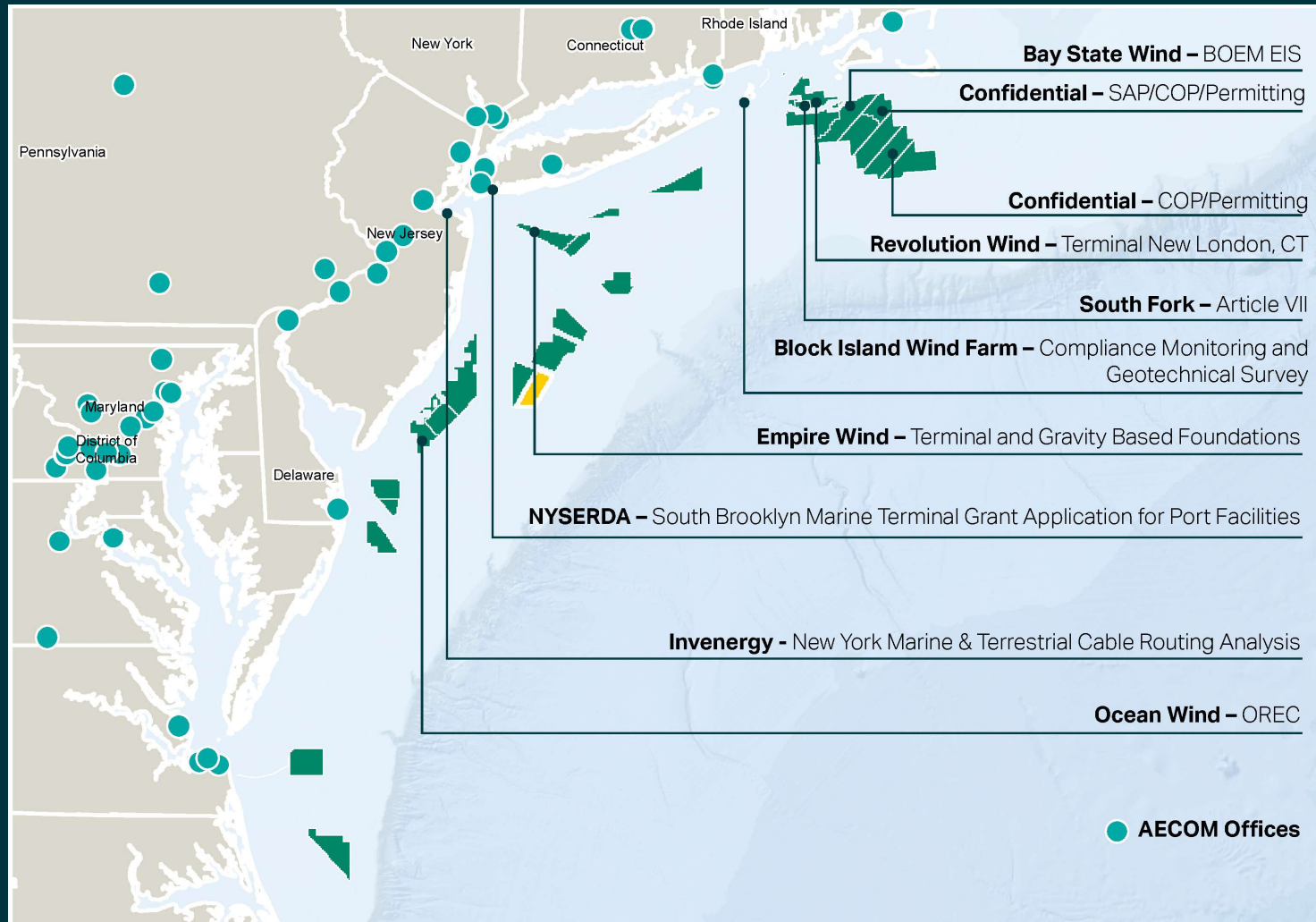
Key ongoing large OSW Ports Projects, State Pier New London, SBMT, NJ Wind Port, & TPA

❖ **Energy Transition**

Experienced in PPM/OE offering for T&D infrastructure and tie-in to Distributed Energy Resources

AECOM

AECOM – Americas: Offshore Wind Experience



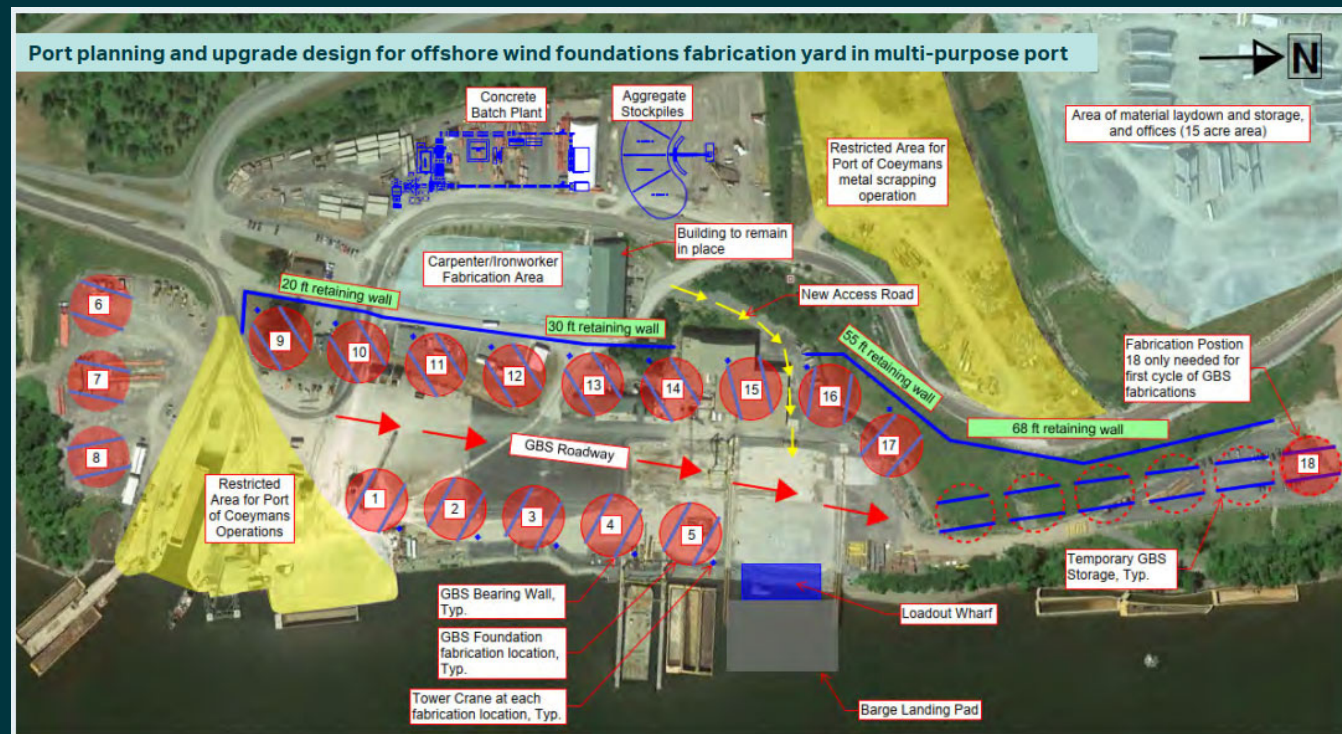
OSW Project Detail by State NYS, NYC, CT, NJ, MD and VA Investing in Port Redevelopment

Coeymans, Albany, NY

- Empire Wind Offshore Foundations
- Concept and Pre-FEED Services for Gravity Base Foundations Fabrication and Installation Terminal

AECOM Services 2019-2020

- Develop site production layout with concrete batch plant
- Terminal modernization and infrastructure upgrades
- Basis of design (heavy lift wharf)
- Identify regulatory framework
- Cost estimate for upgrades



OSW Project Detail by State

NYS, NYC, CT, NJ, MD and VA Investing in Port Redevelopment

NY Expands Offshore Wind Projects, Bringing Wind Hub to Brooklyn

This joint statement is in support of New York State's award of port funding to the South Brooklyn Marine Terminal (SBMT), for future activation as a staging, installation, and maintenance facility for offshore wind components.

AECOM Services

2019 – 2021

Site Investigation & Assessment,
Sediment Sampling
Joint Permit Applications / Approval

Site Investigation & Surveys
Basis of Design – Heavy Lift Wharf + SOV + CTV
Preliminary Engr (Civil, Marine, Geo, Elec)
Program Management
NYSERDA – Funding Assistance Application



Artistic rendering of concept for site development of the South Brooklyn Marine Terminal (not final) Image: Equinor

OSW Project Detail by State NYS, NYC, CT, NJ, MD and VA Investing in Port Redevelopment

AECOM Services

2018 - 2023

Environmental Site Investigation and Assessment
Permit Applications / State & Federal Approvals

Extension of Port Authority Staff

Design Review (5,000 psf Wharf), CMR/Contractor Procurement,
GMP Development, Contract Administration, Permit Monitoring &
Construction Administration / Oversight – target completion Mar'23



Vision Statement (CT Port Authority)

It is the goal of the Connecticut Port Authority to make generational improvements to transform the State Pier in New London into a state-of-the-art heavy-lift capable port facility that will accommodate a wide variety of cargoes, including wind turbine generator staging and assembly. The proposed State Pier infrastructure improvements are being designed to address previously identified facility shortcomings, and enhance the State Pier facility and site conditions to accommodate future cargo needs and capitalize on opportunities for the State of Connecticut.

OSW Project Detail by State NYS, NYC, CT, NJ, MD and VA Investing in Port Redevelopment

AECOM Tishman Services

2021 - 2025

Construction Management at Risk

- Preconstruction (2021)
- Construction (2021-2025)
- Heavy Lift Platform



Credit: NJ Governor's Office

Solicitation	Capacity Target (MW)	Issue Date	Submittal Date	Award Date	Est. Commercial Operation Date
1 (2018)	1,000	Q3 2018	Q4 2018	Q2 2019	2024
2 (2020)	1,200	Q3 2020	Q4 2020	Q2 2021	2027
3 (2022)	1,200	Q3 2022	Q4 2022	Q2 2023	2029
4 (2024)	1,200	Q2 2024	Q3 2024	Q1 2025	2031
5 (2026)	1,400	Q2 2026	Q3 2026	Q1 2027	2033
6 (2028)	1,400	Q1 2028	Q3 2028	Q1 2029	2035

NJBPU
10+ Years of Offshore Wind Solicitations Create a Pipeline of Fabrication and Terminal Use

Gov Murphy to spend \$200M on new wind port as race heats up over offshore industry

The New Jersey Wind Port will support up to 1,500 manufacturing, assembly, and operations jobs. Construction, which is targeted to start in 2022, will create hundreds of additional union jobs.

OSW Project Detail by State NYS, NYC, CT, NJ, MD and VA Investing in Port Redevelopment

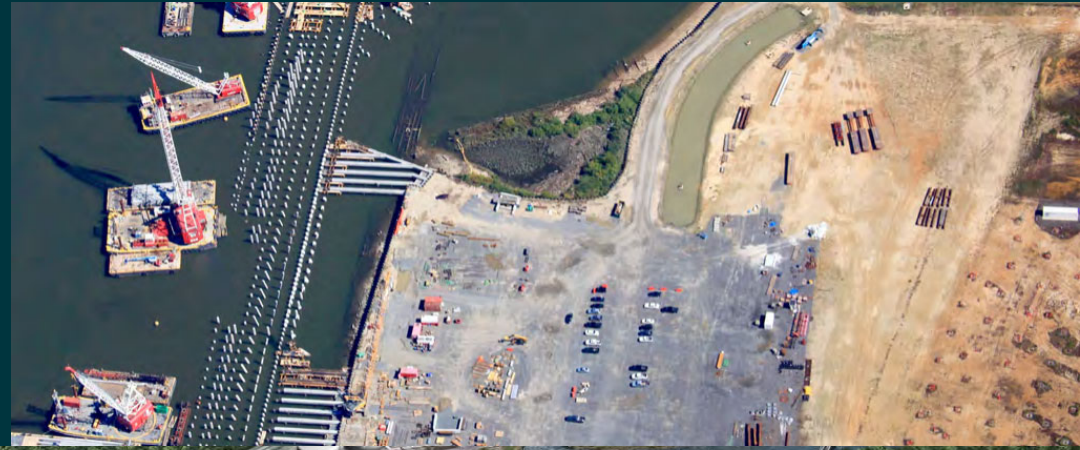
Port of Paulsboro, NJ

- Terminal redevelopment for general cargo (steel plate & coil) and OSW
- Site remediation concurrent with in-water and upland improvements
- EEW monopile fabrication facility

AECOM Services

2004-2017

- Feasibility study and concept design
- Environmental site investigation and assessment
- Permit applications / State & Federal Approvals
- PM / CM services



OSW Project Detail by State NYS, NYC, CT, NJ, MD and VA Investing in Port Redevelopment

Tradeport Atlantic, Baltimore, MD Orsted to invest in a staging center and steel fabrication plant

Phase 1 - \$13.2M: Berth and ground bearing upgrades for 2,000T components (complete)
Phase 2 – 50 acres for laydown, storage and assembly of OSW components

AECOM Services

2021-2022

Site Investigation / Assessment &
Permit Applications

Program Management (Extension of Staff)

