

Horizontal Infrastructure Asset Management

AECOM leads the field in Asset Management innovation. Through our extensive background and experience with the Department of Defense (DOD), we have developed innovative asset management processes and tools supporting capital improvement plans and maintenance prioritization.

Project Experience

PACAF Asset Management Pilot Project – Joint Base Elmendorf-Richardson (Electric, Water, Sanitary Sewer, Storm Water, Airfield Pavements, Roads & Bridges)

Drinking Water System Asset Inventory & Condition Assessments – 7 AETC Bases (AL, MS, OK, TX); Patrick AFB, FL; Peterson AFB, CO; Cheyenne Mtn AFS, CO

Sanitary Sewer Asset Inventory and Condition Assessments – Peterson AFB, CO; Buckley AFS, CO; Edwards AFB, CA; Eareckson AFS, AK; Scott AFB, IL (AMC Pilot Project); 10 AETC Bases (AL, AZ, MS, OK, TX); Yokota AB, Japan; Kadena AB, Japan; Osan AB, Korea; Eielson AFB, AK; Mtn Home AFB, ID; Joint Base McGuire-Dix-Lakehurst, NJ; Patrick SFB, FL; USAFE – Spangdahlem AFB, Germany; Incirlik AFB, Turkey; Aviano AB, Italy; RAF Mildenhall, UK

Miscellaneous

USAF Multi-Base Airfield Pavements PCI Assessment (GeoBase toolkit)

Telecomm Asset Inventory & Condition Assessment – Joint Base Pearl Harbor-Hickam

NSA Crane and Great Lakes Naval Station Fiber Optic System Assessments

Stormwater System Asset Management & H&H Modeling – Yokota AB, Japan

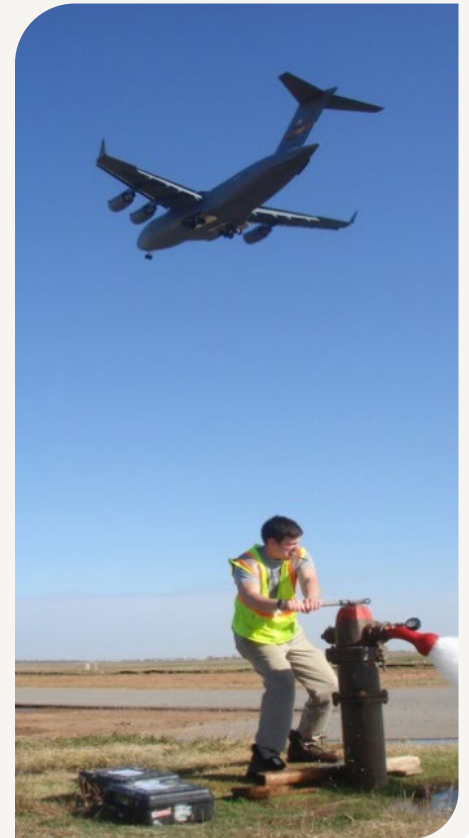
National Guard Linear Segmentation (all utilities + pavements)– 47 installations/17 states

West Point Military Academy – All Utilities Inventory & Capacity - Condition Assessment

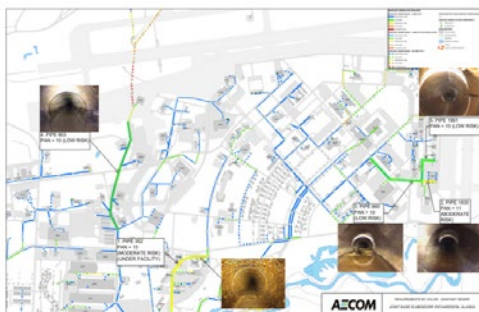
All Utilities Capacity Analysis – HQ IMCOM: Ft Benning, Ft Jackson, Ft Polk

USACE ERDC/CERL Utilities Sustainment Management System Development (5 TOs)

Navy Shipyard Optimization Program – Multiple Utilities: JBPHH-Pearl Harbor, Puget Sound, Norfolk, Portsmouth



Geographic Information Systems



AECOM understands that the key to successful asset management is accurate and sustainable data. Geographic Information Systems are the clear platform for the management, analysis, and reporting of that data. Linear segmentation of horizontal infrastructure allows application of risk scores to defined operational units. Using both DOD defined Spatial Data Standards attributes, and additional relational databases, AECOM has developed Key Indicators of performance and/or potential failure.

Risk-Based Prioritization Model

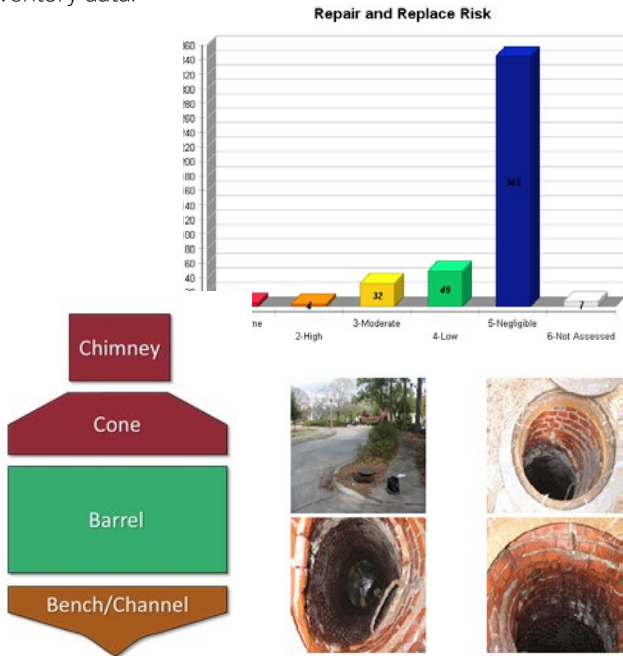


In infrastructure asset management, risk based prioritization models aid effective funding decisions when determining capital improvement planning and the management of operations and maintenance (O&M) requirements.

Our Asset Management approach promotes sustainable prioritization models by developing criteria that are logical and maintainable. Continuously updated databases allow for the trending of maintenance actions to identify potential problem areas, as well as to help track and forecast compliance sampling, identify and prioritize O&M requirements, and enable efficient capital improvements planning and data-based decision making.

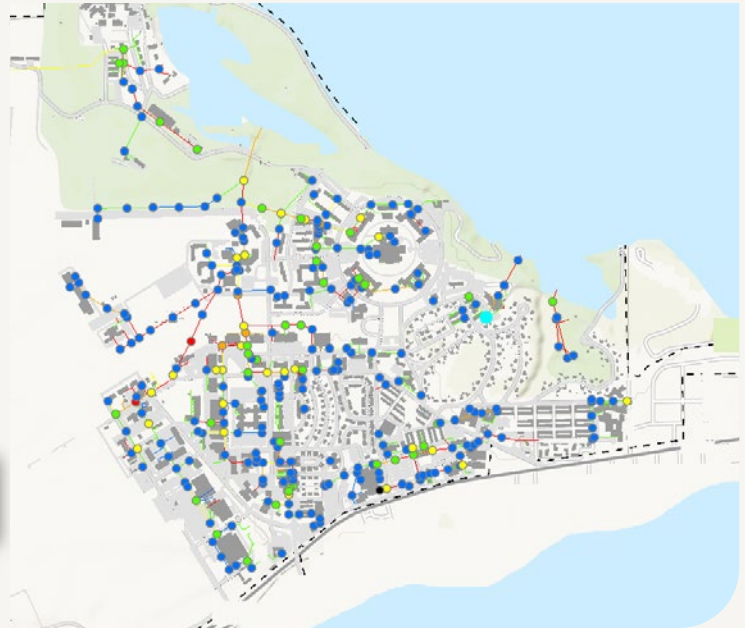
Asset Infrastructure Inventory and Condition Assessments

AECOM provides proven expertise in all horizontal infrastructure systems along with trained field survey teams. These teams, equipped with the latest GIS and photo inspection technology, develop baseline condition assessments and update asset inventory data.



Sustainable Data

AECOM's Asset Management Toolkit combines ArcGIS & CartoPac with customized web applications for data collection, analysis, management, and reporting. Together these tools provide a seamless and integrated workflow process to maintain and sustain asset data for risk prioritization and O&M scheduling.






Points of Contact

Robert Abernethy AECOM San Antonio, TX | robert.abernethy@aecom.com; 210-253-7542

Brian Staudt AECOM San Antonio, TX | brian.staudt@aecom.com; 210-253-7502

James Garza AECOM San Antonio, TX | james.garza@aecom.com; 210-296-2130

 [linkedin.com/showcase/aecom-government](https://www.linkedin.com/showcase/aecom-government)
 twitter.com/aecomgovernment
 aecom.com/govt