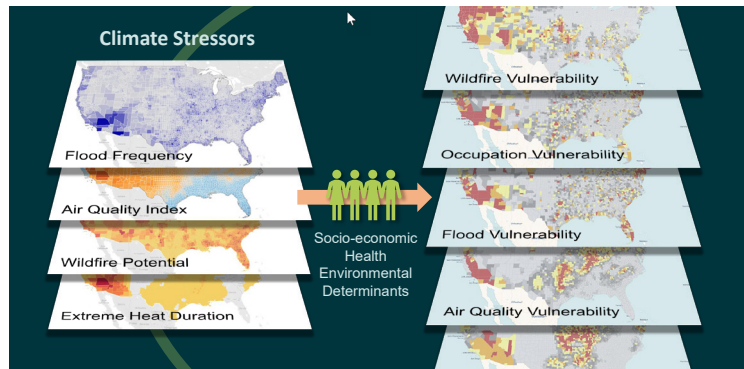


# Equity Analytical Tools



Our proprietary equity-based analytical tools are continually adapted to incorporate cutting-edge approaches to evaluate and understand equity-based project decision making.



<https://innovating-environment.aecom.io/>

Our interdisciplinary team of experts holistically analyze potential environmental and social consequences, actively engage stakeholders, and ensure project effects to equity communities are fully integrated into the planning process, resulting in maximum positive effects.

**EPA Climate Change-related Vulnerability Indicators.** How are individual communities affected by climate change and what proactive investments should be made? Our nationwide US dataset of social vulnerability indicators and historical trend analysis for climate change-related stressors focuses on sensitive population groups categorized with socio-economic, health, and other determinants such as urban environments and occupations.

**Equity-Focused Project Planning & Prioritization.** Our tools and methodologies enable comprehensive integration of Equity considerations into planning and decision processes using a specially designed scorecards for project performance, equity and combined performance and equity to help make the most equitable infrastructure investment choices.

**Sustainable Systems Integration Model (SSIM).** AECOM leverages, adapts, and uses innovative approaches to SSIM as part of our sustainability planning process. Organized around core themes of mobility, energy, water, building technology, socio-cultural, ecology and carbon footprint, this process is designed to optimize aspects of economic, social and environmental health.

**Virtual Stakeholder Engagement.** How to you get a cross-spectrum of a community engaged in a project? Host a 24/7 open house. Our proprietary virtual engagement tools have been used on over 125 projects in the last year, duplicates the in-person open house experience online and are customized to meet the needs and preferences of specific audiences.

**Co-creation with Community-Based Organizations.** We believe that diverse voices, backgrounds, and perspectives should be at the heart of planning processes; Community-Based Organizations (CBOs) know their community best including past history and how best to engage with local residents. AECOM works directly with CBOs to employ their expertise in the co-creation and delivery of engagement strategies.

