

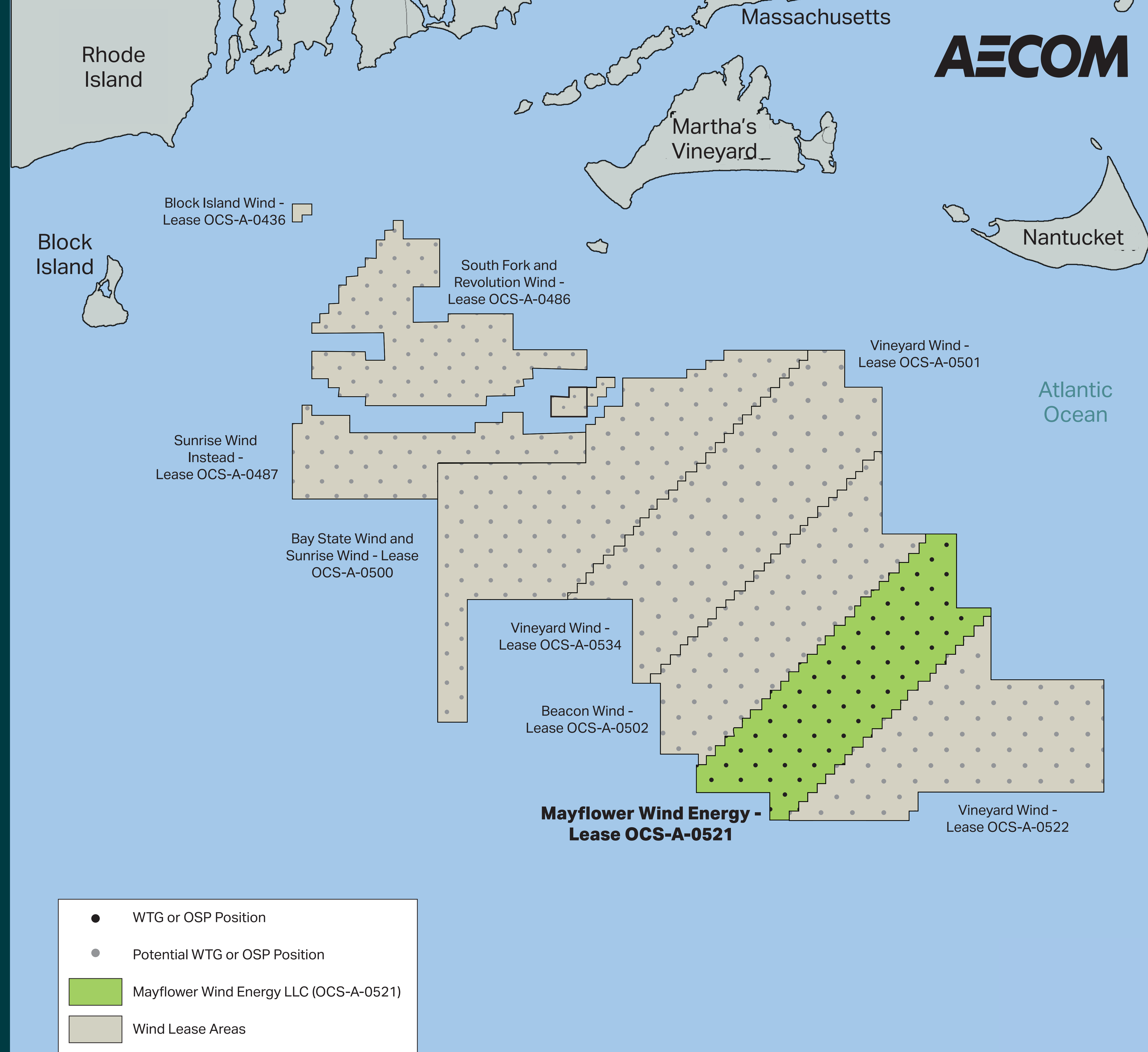
Mayflower Wind Project

➤ 19 Technical Reports and Plans to Support COP Development

- Benthic survey plans
- Benthic infauna sample analysis and video analysis for epifauna
- Visual impact assessment
- Terrestrial archaeology/historic properties
- Seagrass
- Essential Fish Habitat
- Air quality/emissions

➤ Permitting

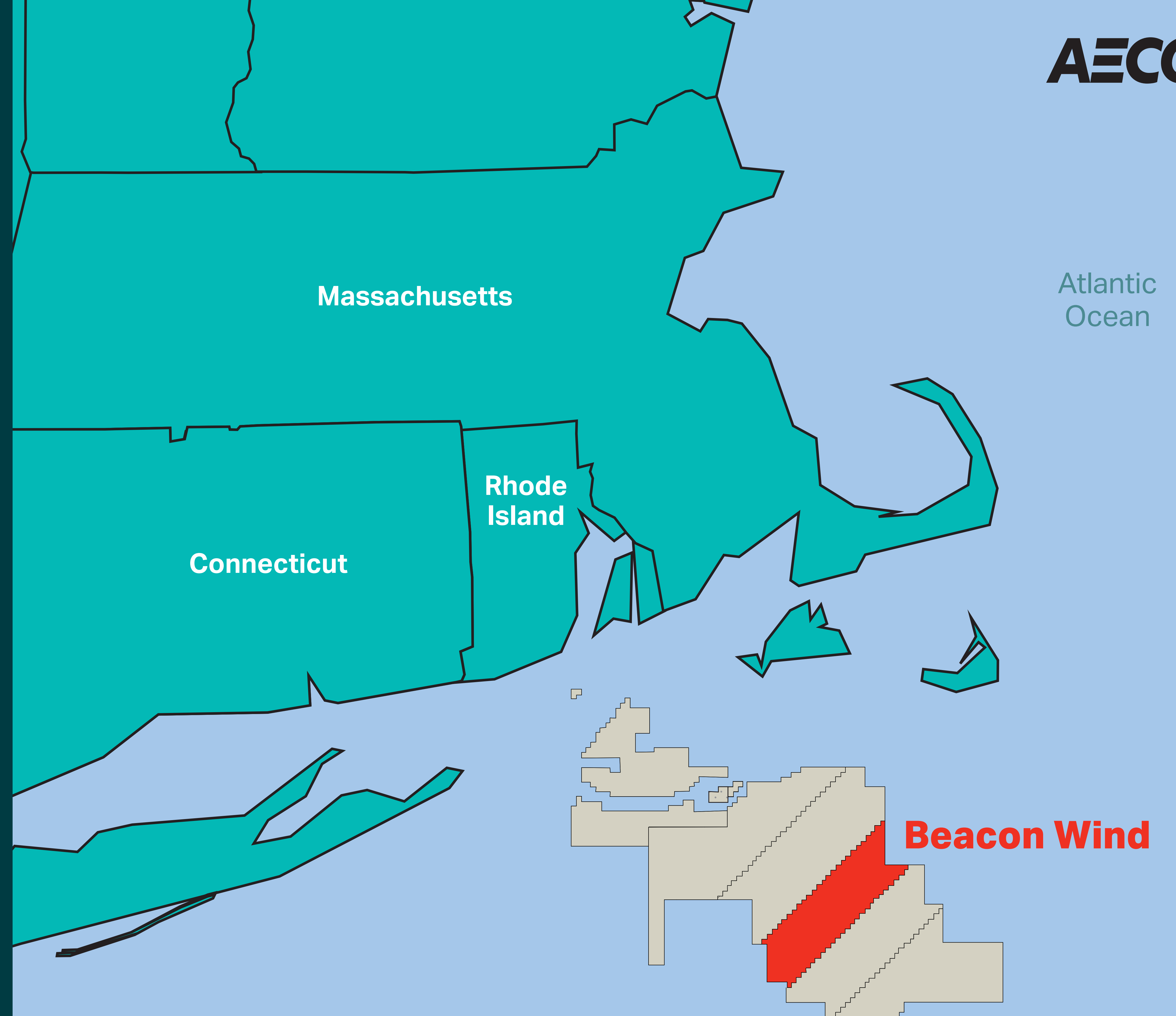
- **To date:** Filed MEPA ENF and EFSB petition
- **Upcoming:** MA MEPA EIR, Ch 91/WQC, State/local wetlands, Section 106 consultation, NMFS EFH consultation, OCS Air Permit, Army Corp 404/10



Beacon Wind Project

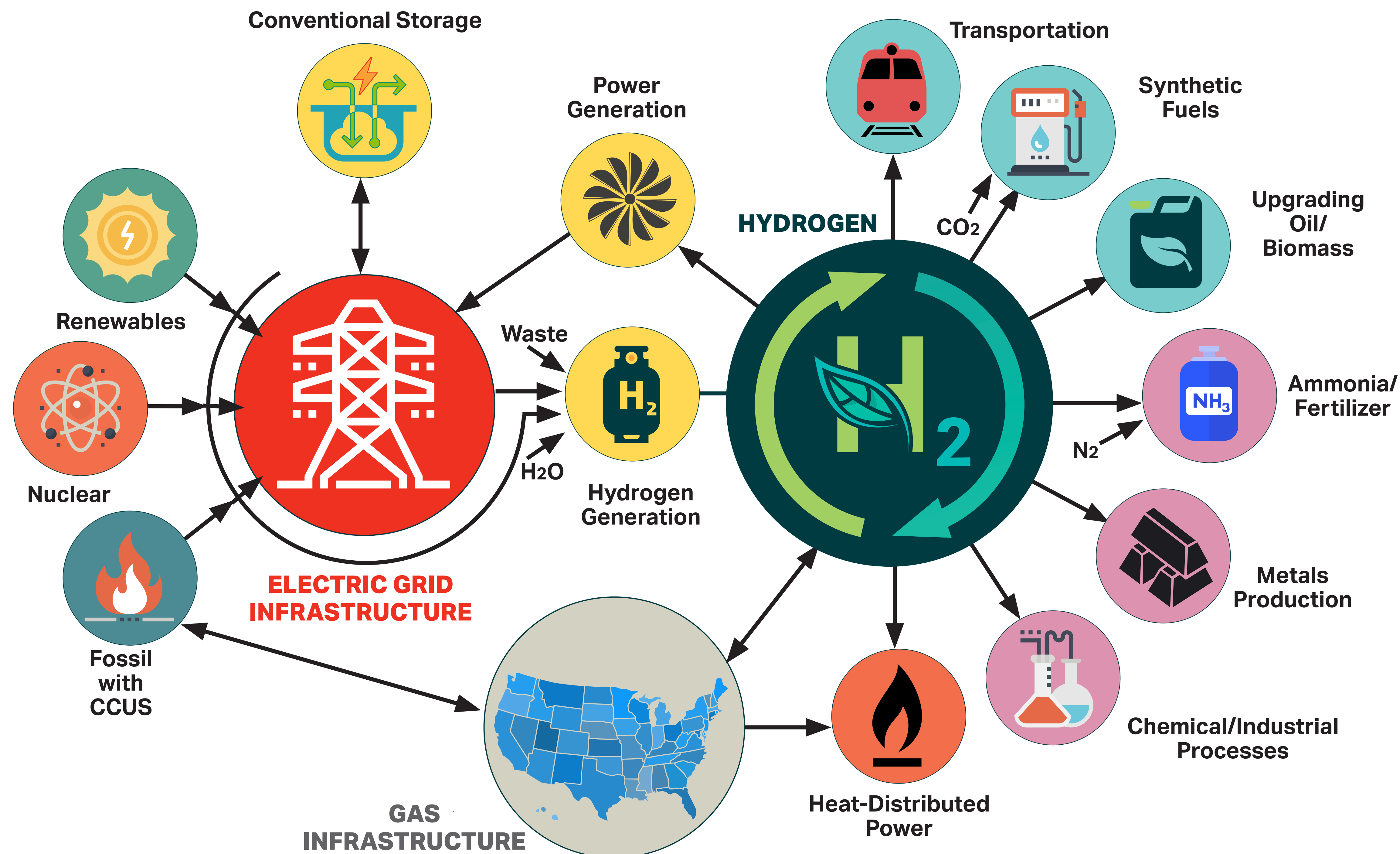
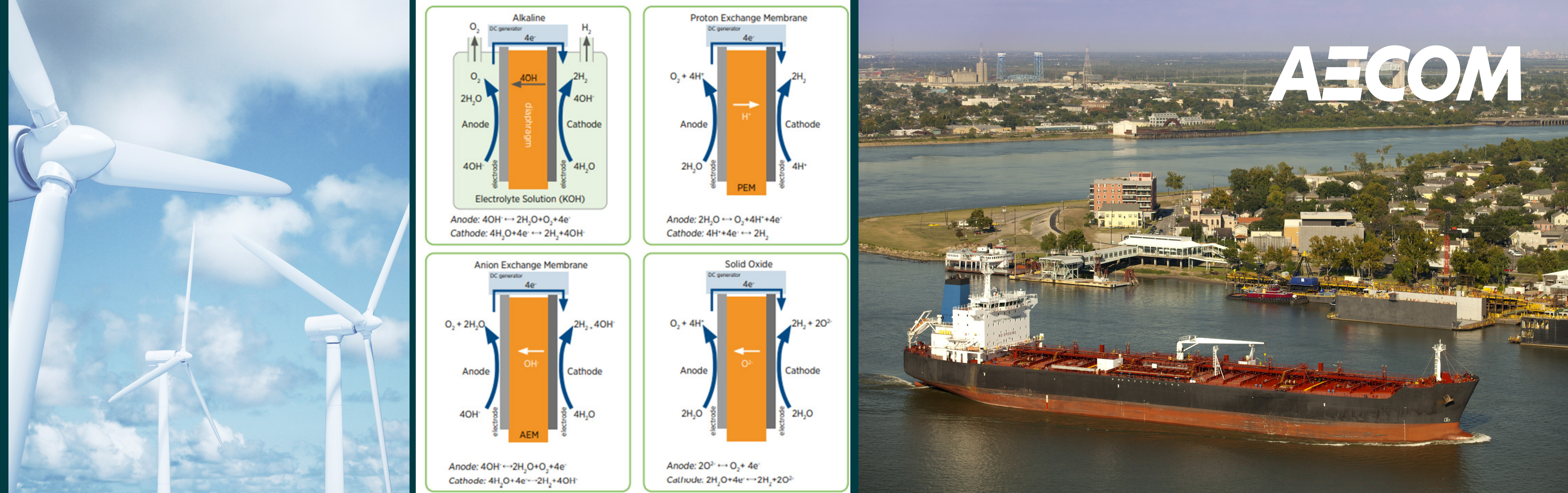
- Developed Site Assessment Plan (SAP)
- Prepared Construction and Operations Plan (COP)
- Stakeholder Engagement and Planning
- Fisheries Outreach
- Tribal Liaison, Qualified Marine Archaeologist (QMA), On-board Survey Rep
- Obtained Incident Harassment Assessment (IHA), Prepared Survey Plans
- Federal and State Approvals,
- Developed Benthic and Essential Fish Habitat Survey Design/Protocols
- New York Article VII Permitting Support
- Innovative geographic information system (GIS) Tools including Portal

AECOM

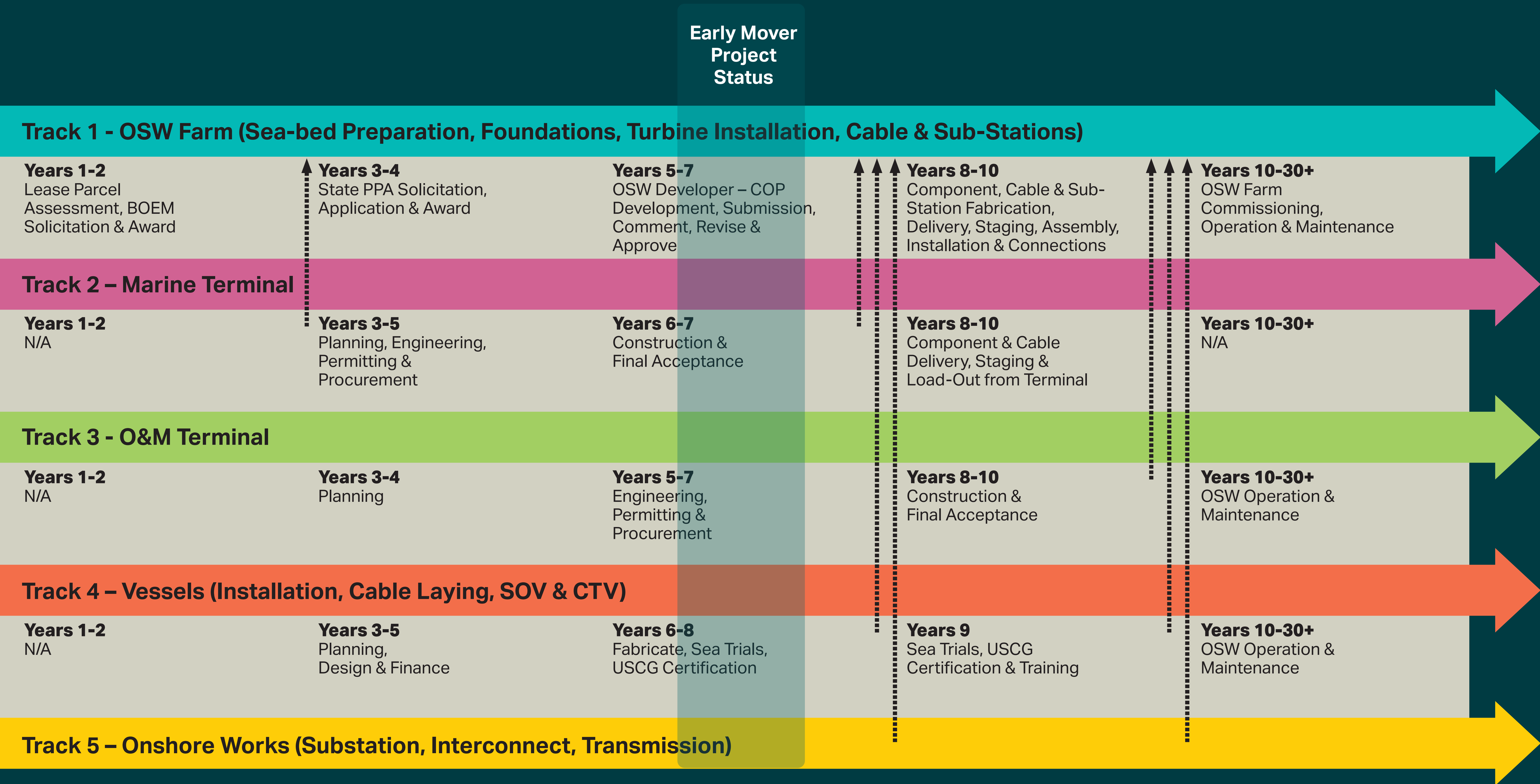


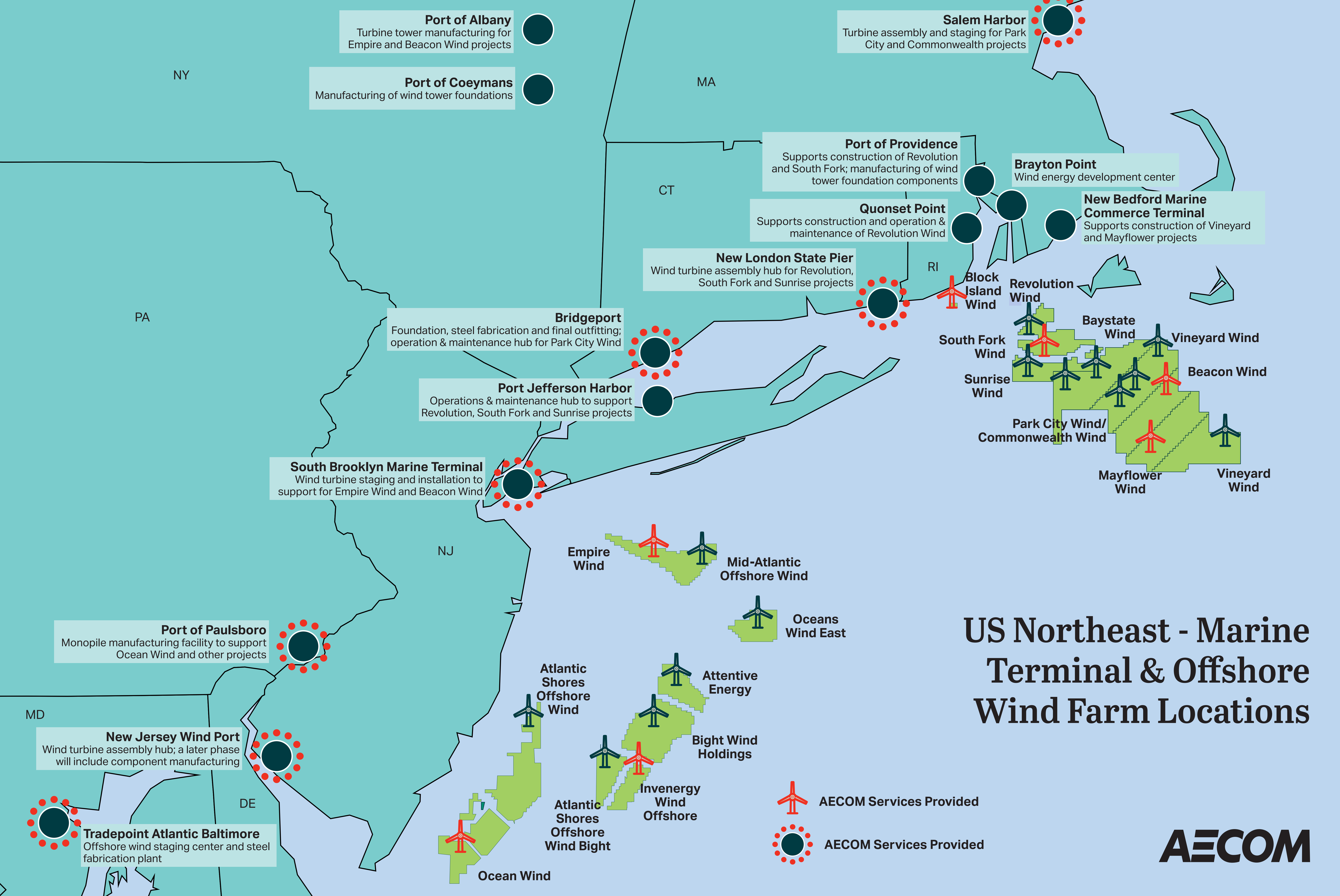
BOEM H₂-OSW Regulation

- Adaptation of existing BOEM / Federal Guidance for green H₂ fuel from OSW energy (H₂-OSW)
- Extensive BOEM consultation
- Environmental, Socioeconomic, Safety issues
- Business cases
- Approach to rapidly evolving technology and implementations
- Partnering for research and development
- Market-readiness and fit
 - US Federal energy policy effects
 - Strong regional variability



Typical 10 Year Development Timeline



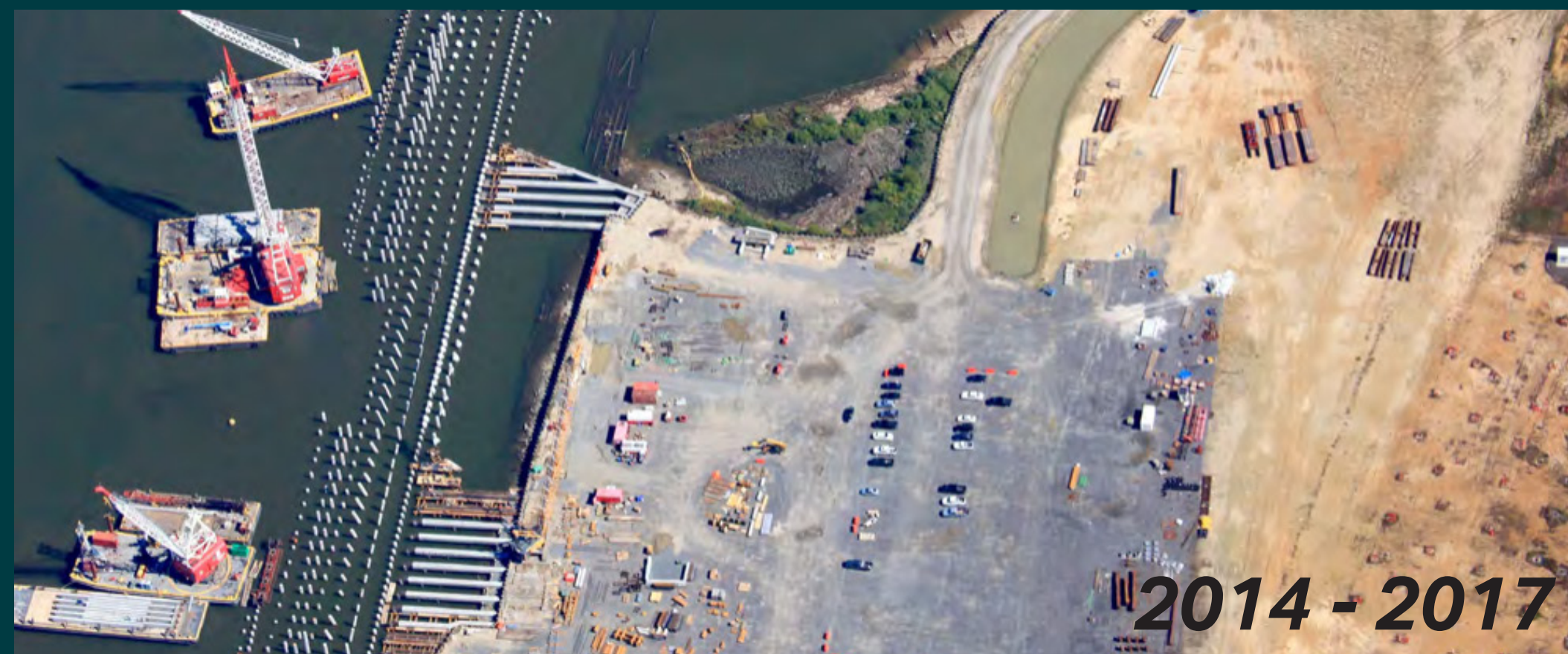


Port of Paulsboro, New Jersey

- Terminal redevelopment for general cargo (steel plate & coil) and OSW
- Site remediation concurrent with in-water and upland improvements
- EEW monopile fabrication facility

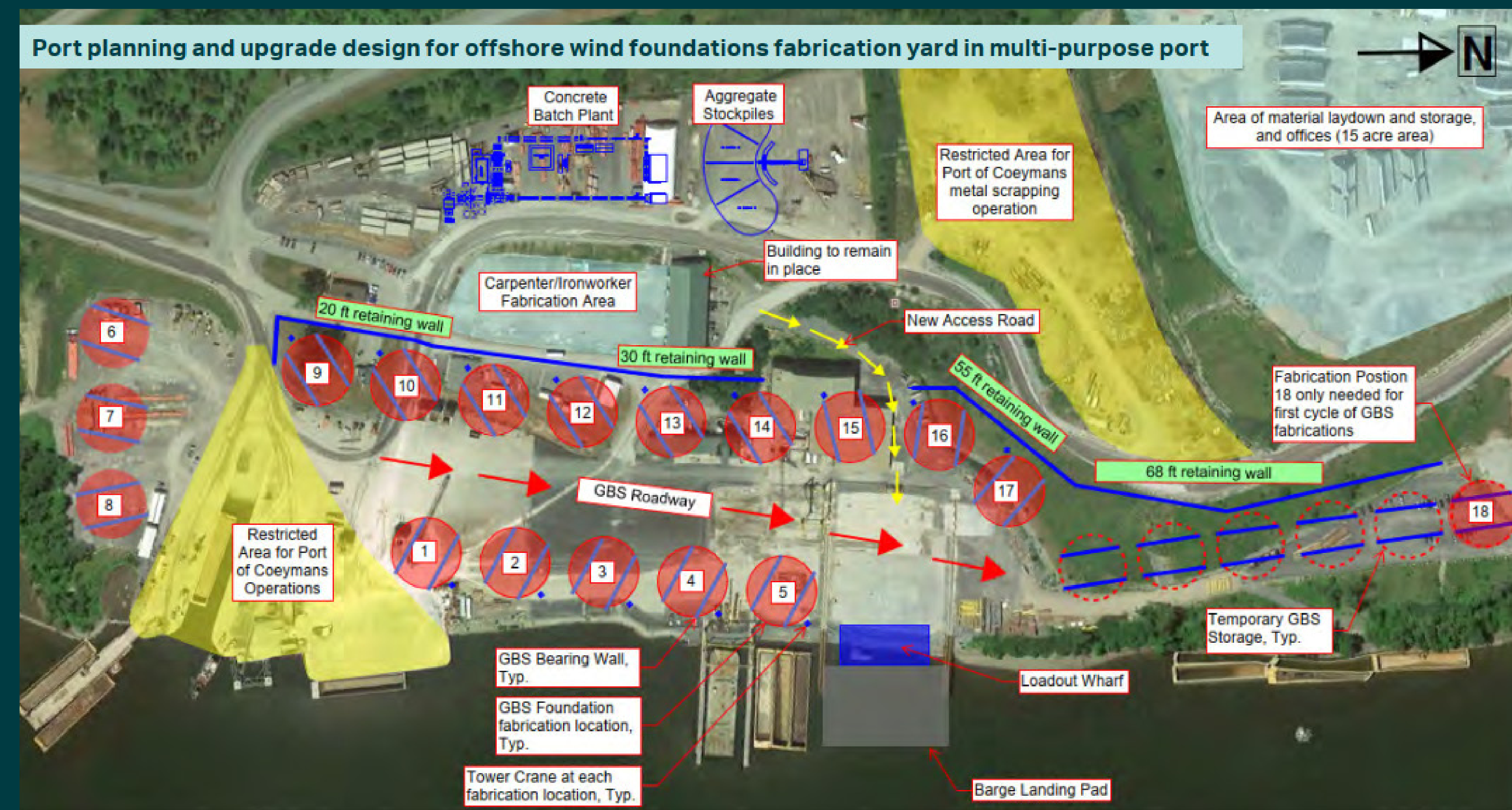
AECOM Services 2004-2017

- Feasibility study and concept design
- Environmental site investigation and assessment
- Permit applications/ State & Federal Approvals
- PM / CM services



Coeymans, Albany, New York

- Empire Wind Offshore Foundations
- Concept and Pre-FEED Services for Gravity Base Foundations Fabrication and Installation Terminal



AECOM Services 2019-2020

- Develop site production layout with concrete batch plant
- Terminal modernization and infrastructure upgrades
- Basis of Design (8,500 psf wharf)
- Identify regulatory framework
- Cost estimate for upgrades

South Brooklyn Marine Terminal, NYC, New York

AECOM Services

2019-2022

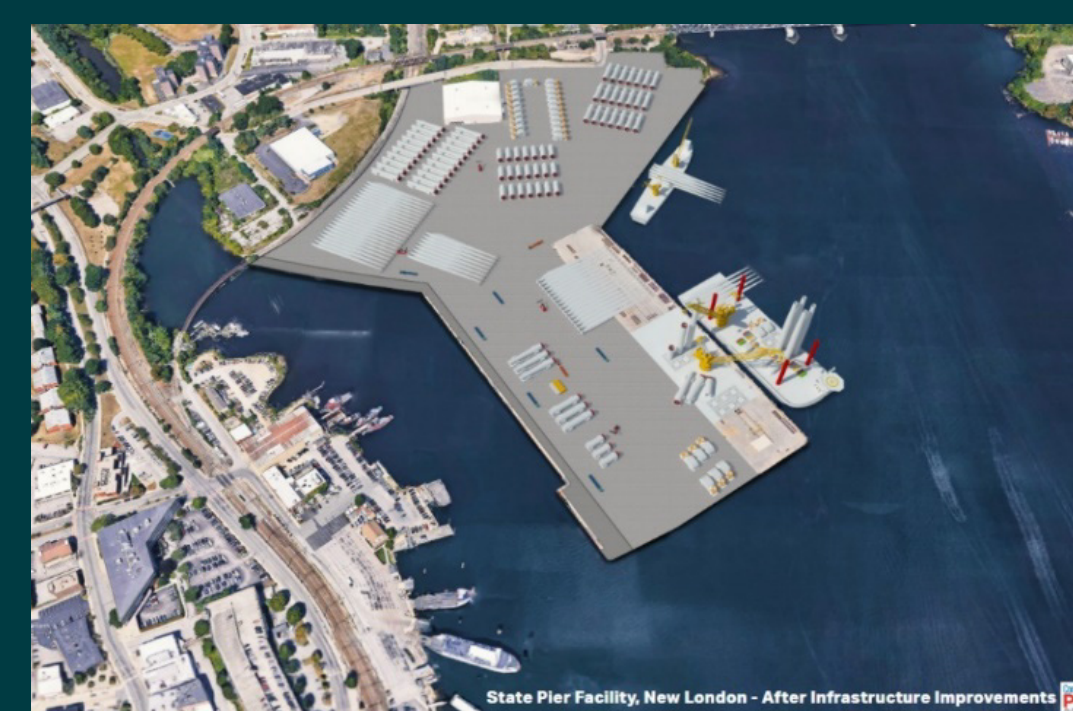
- Site Investigation & Environmental Assessment
- Sediment Sampling
- Joint Permit Application (NYState & USACE)
- Site Investigation & Surveys
- Basis of Design: Wharf Improvements include Heavy Lift + SOV + CTV
- Preliminary Engr (Civil, Marine, Geo, Elec)
- Program Management
- NYSERDA – Funding Assistance Application



Artistic rendering of concept for site development of the South Brooklyn Marine Terminal (not final) Image Equinor

Construction Timeline: 2023 - 2025

Connecticut Port Authority State Pier, New London, Connecticut



Heavy-lift capable port facility that will accommodate a wide variety of cargoes, including wind turbine generator staging and assembly. Design addresses previously identified facility shortcomings, and enhance the State Pier facility and site conditions to accommodate future cargo needs and capitalize on opportunities for the State of Connecticut.

AECOM Services

2018-2023

- Environmental Site Investigation and Assessment
- Permit Applications / State & Federal Approvals
- Extension of Port Authority Staff
- Design Reviews - Heavy Lift Platforms
- CMR / Contractor Procurement
- GMP Development, Contract Administration & Permit Compliance

Construction Completion Date: Mar 2023

New Jersey Wind Port

AECOM Services

2021-2025

Construction Management at Risk

- Preconstruction (2021)
- Construction (2022-2025)
- Heavy Lift Platforms



The New Jersey Wind Port will support up to 1,500 manufacturing, assembly, and operations jobs. Construction, which is targeted to start in 2021, will create hundreds of additional union jobs.

Tradepoint Atlantic, Baltimore, Maryland



Terminal redevelopment of over 200 acres and multiple wharfs and piers at an Offshore Wind Port for a component staging and assembly center, including a monopile steel fabrication facility and a subsea array cable manufacturing facility. Elements include uniform heavy lift wharfs, roll-on/roll-off berths, and pavements for staging, loading and crane operations.

AECOM Services

2021-2022

- Site Investigation & Assessments
- Grant Funding Assistance
- Environmental Permitting & Approvals
- Project & Construction Management

Smart Path Reliability Project

AECOM Services

- Project/Program Management
- Procurement Management
- Preliminary engineering and permitting support
- Contractor onboarding
- On-site Construction Safety Management
- Right of Way Agents

- Rebuilding two 86-mile-long Moses-Adirondack transmission lines
- Rebuild at 345kV, Demo 230kV



Smart Path Connect Project

AECOM Services

- Project/Program Management
- Construction Management
- Cost Estimating
- Risk Assessment and Management
- Value Engineering
- Project Management Information System
- Procurement Management
- Preliminary engineering and permitting support
- Right of Way Agents

- Rebuilding 50-mile-long transmission line
- Replace/Upgrade 10 substations
- Voltage up to 345kV



Salem Wind Port Redevelopment

AECOM Services 2022-2025

- Site Investigation & Surveys
- Upland Improvements to Achieve 3,000-4,000 psf in the Laydown Yards
- Basis of Design – 6,000 and 4,000 psf heavy lift platforms
- Sediment Sampling Plan & Dredge Material Management
- Community Engagement and Permitting Support
- Engineering Design
- Grant Funding Assistance (Technical + BCA)



- Re-development of existing 42-acre brownfield site into a staging, marshalling and pre-assembly terminal
- This fast-track project is targeted to commence construction in summer 2023 with operations starting January 2025

