

# Global Goods Movement Infrastructure

Ports and Marine





# Delivering forward-thinking projects

**Around the world, we plan, engineer and oversee construction on complex and essential port and marine facilities.**

With more than 80 years of port design and development experience, we've gained an in-depth understanding of the industry and its intricate commercial and policy drivers. We work with some of the world's leading public and private sector maritime organizations, helping them deliver port infrastructure and other coastal facilities in support of maritime trade.

**Transforming innovative ideas into real-world solutions.**

Our client relationships are built on an appreciation of business needs and a proven record of innovative and cost-effective project development. From the early planning stages through to construction, we combine our broad global reach with our strong regional presence to implement industry best practices and deliver effective local solutions across the entire life cycle of vital port and marine infrastructure.

## Contents

**06**  
Goods Movement

**08**  
Global Experience

**12**  
Global Expertise

**14**  
Delivery Offices

**16**  
Project Experience

# At **AECOM**, we're delivering a better world.

As the world's trusted infrastructure consulting firm, AECOM is committed to managing our business with the utmost responsibility and to always strive for better – whether by reducing emissions, creating social value or diversifying our senior leadership and workforce.

We understand both the urgency of the challenges facing our society and our responsibility to respond in an impactful and enduring way. With this consciousness, we're leading the change toward a more sustainable and equitable future, partnering with those who want to make a positive difference in the world.

We're listening to our clients and the communities we serve to improve lives and livelihoods, and to create sustainable legacies for generations to come.

Thinking without limits is what keeps us at the vanguard. Ideas have no borders, and this ethos is embedded in our culture. The full scope of our global capabilities is available to anyone who needs it, wherever they are based.

We're trusted advisors — planners, designers, engineers, scientists, consultants and program and construction managers — delivering professional services spanning, transportation, buildings, water, the environment and new energy. Working throughout the project lifecycle, we're one team driven by a common purpose to deliver a better world.



54,000 people



#1 by Fortune magazine as the World's Most Admired Company in its industry for the 12th consecutive year.



Named one of 2024 World's Most Ethical Companies for its commitment to integrity and making a positive impact by Ethisphere.



100% Rating on Corporate Equality Index / Best Places to Work for LGBT Equality 2025.



Named a 2024 Military Friendly® Employer by VIQTORY — marking nearly two decades that we've received this honor.



# #1

ENR  
Transportation

# #1

ENR  
Top Design Firm

# #3

ENR  
Ports and Marine

# 900

Goods Movement Global Staff



# A global leader in multi-modal transportation planning and engineering

AECOM understands that effective goods movement requires efficient ondock, near-dock and inland intermodal facilities with connectors from inland logistics and distribution centers, ports and airports to highways and railroads.

Our project teams study all aspects of the goods movement system to deliver accurate and concise planning and design that will help our clients improve the transport of goods to market.

We've been in this business since the onset of containerization. From business planning and economics to master planning and operations analysis, to the detailed design and construction of facilities, our team understands the entire process.

We collaborate with our clients to develop innovative solutions that help to meet your connectivity needs and keep goods moving.

Our transportation solutions across the supply chain will serve to innovate, automate and sustain both the infrastructure and economies of the communities in which we live and work.

BY THE NUMBERS

600

Ports and Marine professionals

300

Rail and Industrial professionals

75

Actively working at 75 ports globally, including Hong Kong, Melbourne, Pipavav, Jebel Ali, Rotterdam, London, Panama, Manzanillo, NY/NJ, Savannah, Miami, New Orleans, Houston, Long Beach, Los Angeles

## Every step of the journey — Goods Movement Services



### Producer/Manufacturer

Design support to manufacturing, industrial, mining, O&G clients with their rail and waterfront assets.



### Ocean Freight/Ports

Global expertise supporting port authorities, global port terminal operators and cruise liners in the design and construction of marine and landside infrastructure.



### Freight Rail

Experience with all Class I railroads in North America as well as global operators designing infrastructure such as yards, intermodal terminals, sidings and rail structures.



### Air Freight

Strong global aviation capabilities and experience with airports, airlines and air cargo companies designing airside infrastructure for people and cargo..



### Trucking and Distribution

Number 1 design firm in highway and bridges with experience in design and simulation of port and terminal access roads, transload and distribution development, industrial parks and logistics centers.

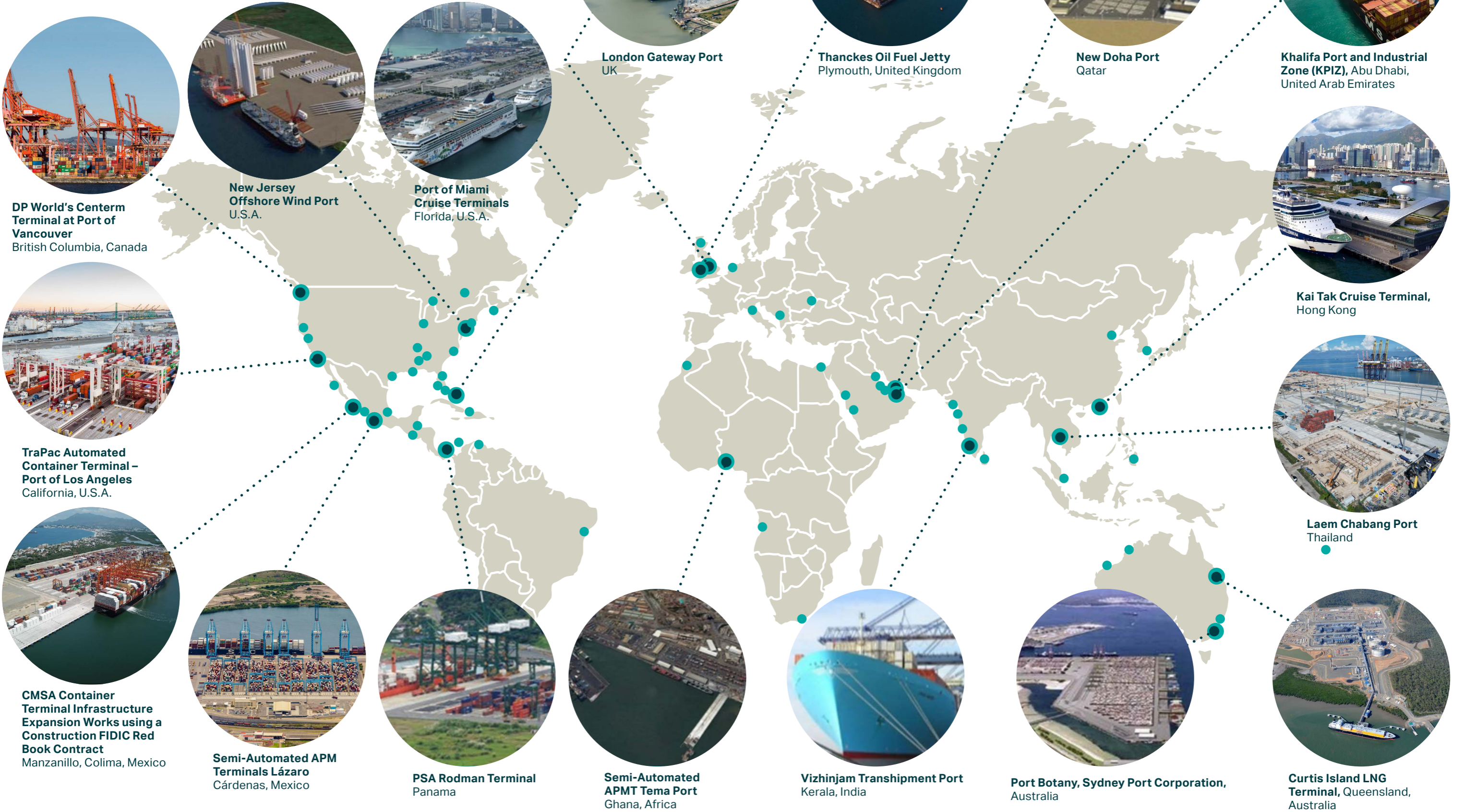


### End Customers

Integrated and multi-disciplinary approach to delivering Goods Movement infrastructure for End Customers.

# global experience and INNOVATION

Serving our global clients with a tailored approach



# Delivering all facilities supporting marine transportation

## Dry and Liquids Bulk Terminals



Electrogas Malta LNG



Independent Deepwater Petroleum Terminal, Pengerang, Malaysia



Bloom Lake Mine to Port Railway Labrador, Quebec, Canada

## Offshore Wind Terminals



South Brooklyn Marine Terminal New York



New London State Pier Connecticut



New Jersey Wind Port Salem

## Container Terminals



Louisiana International Container Terminal, USA



Victoria International Container Terminal (Webb Dock East), Melbourne, Victoria, Australia



Colombo South Container Terminal, Colombo, Sri Lanka

## Rail and Intermodal



BNSF Stockton Intermodal Yard



Port of Los Angeles Pier 300 Intermodal Container Transfer Facility, California



Mississippi River Intermodal Terminal, New Orleans, USA

## Cruise and Ferry Terminals



Liverpool Cruise Liner Terminal, Liverpool, United Kingdom



Port of Galveston Cruise Berths Shorepower, USA



The Queen Mary, Port of Long Beach, California, U.S.A.

## Defense and Naval Facilities



US Coast Guard Base Seattle Polar Security Cutter Seattle, WA



Project Seabird Marine Works and PMC Services for Indian Navy, Karwar, India



U.S. Navy Shipyard Infrastructure Optimization Program (SIOP)



**global**  
EXPERTISE  
DELIVERED  
LOCALLY

## AECOM is the market leader in planning, design and managing complex and state of the art ports & marine infrastructure globally

**With our global and regional reach we complement our local knowledge with innovative solutions from our global experts. Our approach enables us to achieve best-value solutions over the entire life cycle of a project for our clients.**

Global Ports & Marine business is responsible for identifying, overseeing and managing mega port project opportunities in collaboration with the existing Ports & Marine resources that are designated by Region and Geography. The Global team brings the experience and expertise to local projects and pursuits.

The Global team is responsible for sharing and providing the state-of-the-art best practices and innovation in the industry and dissemination of crucial project details in helping achieve client objectives and project budget and timelines on projects located in various geographies.

This structure allows AECOM to be the Trusted Partner to those of our global port clients resulting in better communication to meet our client's strategic needs.

AECOM's global ports & marine leadership supports:

- Port complexes and marine terminal development projects that require each major discipline including civil, electrical, structural, architectural, MEP, traffic, environmental, geotechnical, security, communications and asset management;
- Major private-sector clients (i.e. terminal operators) with active projects and tender opportunities in multiple AECOM organizational areas (Regions and Geographies), occurring concurrently.
- Major public-sector clients (i.e. port authorities) in need of specialized Ports & Waterways capability to immediately respond to call-in task order assignments
- Providing subject matter experts in terminal and ship movement simulations, coastal modeling, High Voltage electrical, marine structures, port security, environmental permitting and building architecture.
- Pursuit and delivery of mega greenfield port projects in developing and under-developed countries, which require global cooperation to adequately staff the resources.

# global PORTS and MARINE

Delivery Offices



# NORTH AMERICA

North America is AECOM's largest market in providing integrated Ports & Marine services to port authorities, agencies, U.S. Navy, shipping and cruise lines and private operators and developers.

AECOM has been at the forefront of providing innovative planning and engineering solutions to the North American ports & maritime market for last 80 years with specialization in planning, port and harbor engineering, urban waterfront design, coastal engineering, offshore structures, economic and strategic evaluation and program and construction management.

AECOM has delivered projects on the East Coast, West Coast, Gulf of Mexico, along Mississippi River and other Marine Highways, as well as in the Great Lakes region.

AECOM offers an integrated multi-disciplinary team of professionals in port planning, design, engineering and construction services throughout North America to provide a superior level of service to our clients for all aspects of port and intermodal development including railroad intermodal facilities, track design and operations, renewable energy programs and resiliency efforts for climate change.

## Offices

- Vancouver
- Orange
- Oakland
- Seattle
- Houston
- New Orleans
- Coral Gables
- Savannah
- Virginia Beach
- New York City

## Key Contacts



**Isaac Wingfield, PE**  
Vice President  
Global Ports Market Sector Leader  
isaac.wingfield@aecom.com  
904.233.6501



**Richard Mast, PE**  
Vice President  
Ports & Marine Division Leader, West  
richard.mast@aecom.com  
714.824.1250



**Marlin Peterson**  
Vice President, Ports & Marine  
Division Leader, NY Metros  
marlin.peterson@aecom.com  
908.887.0655

## Services

- Strategic planning
- Port master planning
- Port and terminal simulations modeling
- Grants and Funding strategy and applications
- Engineering design
- Civil and structural engineering
- Geotechnical engineering
- Mechanical and electrical engineering
- Asset management and condition assessment
- Road and rail transport planning and infrastructure
- Environment permitting and impact assessment
- Program management and construction management
- Digital transformation

## Clients

- U.S. Navy
- Georgia Ports Authority
- The Port of New Orleans
- Port of Houston Authority
- Port of Los Angeles
- Port Miami
- Port of Long Beach
- Vancouver Fraser Port Authority
- Battery Park City Authority
- Crowley Maritime
- TxDOT Maritime Division
- Shell New Energies
- Prince Rupert Port Authority
- Defence Construction Canada

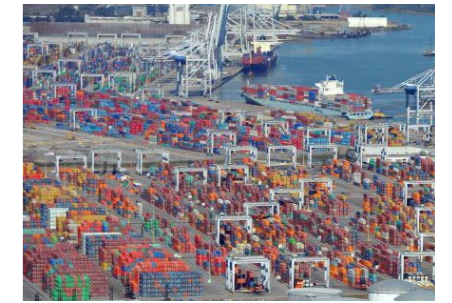
# Project Experience



**Marathon Petroleum Marine Loading Infrastructure Design**  
Garyville, Louisiana



**Louisiana International Terminal**  
New Orleans, LA



**Georgia Ports Capital Development**  
Savannah & Brunswick, GA



**Port of Long Beach Zero Emissions Study,**  
Long Beach, CA



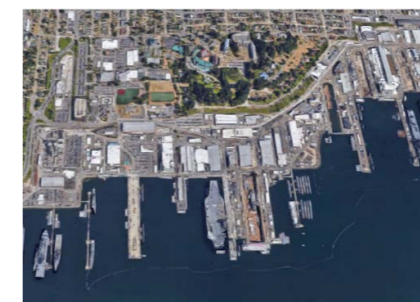
**Meadowland and Lower Manhattan Coastal Resiliency**  
New York, NY



**Roberts Bank Terminal 2**  
Vancouver, Canada



**New Jersey Wind Terminal**  
New Jersey, NJ



**Shipyard Infrastructure Optimization Plan**  
**Puget Sound Naval Shipyard**  
Bremerton WA



**Port Miami Program Management Consultant**  
Miami, FL

AECOM has been a leader in port design and development projects for nearly 80 years with a significant presence throughout Latin America and the Caribbean. This long-standing involvement in the region and the port industry provides us with an in-depth understanding of the industry and its commercial and policy drivers.

Our team of Ports and Marine specialists plan, design and project manage the infrastructure essential for the facilitation of maritime trade for both public and private sector clients. Our relationships with our clients - who are among the leaders in the industry both regionally and globally - are relationships built on an appreciation of their business needs and a proven record of innovation and cost-effective project delivery.

Some representative projects for which we have provided planning, engineering, technical assistance and construction services include the following:

## Services

- Due Diligence and Feasibility Analysis
- Prequalification and Tendering Process
- Project and Program Management
- Freight Rail and Intermodal Yards Design
- Engineering Design (Conceptual & Detailed)
- Construction Management and Site Supervision
- Contract Administration including The Engineer role under FIDIC terminology
- Wharf and Container Yards Design
- Technical Advisory and Permitting
- Simulation Modeling
- Coastal Studies and Modeling
- Environmental Assessment Studies

## Offices

- Mexico City
- San Juan City (Puerto Rico)
- Panamá City
- São Paulo
- Buenos Aires
- Lima City (Perú)
- Bogota

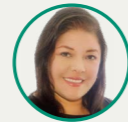
## Key Contacts



**Nicolas Morris**  
Vice President, LATAM Transportation Business Line Leader  
nicolas.morrisgomez@aecom.com  
+525530418444



**Mauricio Suarez**  
LATAM Ports Market Sector Leader  
mauricio.suarez@aecom.com  
+15613069182



**Dallaney Valbuena**  
Vice President, LATAM Ports Market Technical Lead  
dallanny.valbuena@aecom.com  
+573184947821

## Clients

- Panamá Ports Company (HPH-PPC)
- Panamá International Terminal (PSA-PIT)
- Contecon Manzanillo (ICTSI-CMSA)
- Lazaro Cardenas Terminal (APMT-LZC)
- Panamá Canal Authority
- Peruvian Navy
- Port Authority of Jamaica
- Puerto Rico Ports Authority
- The Grand Bahama Port Authority
- Agency for International Development Haiti.

# Project Experience



**PSA Panamá International Terminal**  
Panamá



**APMT Container Terminal – TEC II** using an EPC FIDIC Yellow Book Contract  
Mexico



**CMSA Container Terminal Infrastructure Expansion Works** using a Construction FIDIC Red Book Contract  
Mexico



**Port Authority of Jamaica, Kingston Terminal Planning & Simulation**  
Jamaica



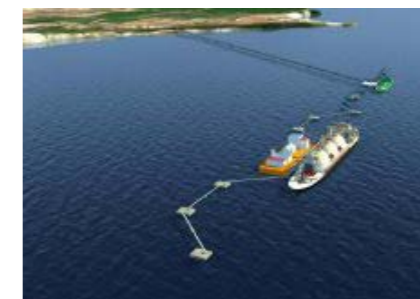
**Panamá Canal Expansion Project Design Services**  
Panamá



**Detailed designs of the infrastructure/works for the recovery of the Navigability of the Magdalena River**  
Colombia



**USAID Haiti Port Feasibility Study**  
Haiti



**Barcarena LNG Project Concept and Design Studies**  
Brazil



**New Callao Naval Base**  
Perú

Our wide-ranging capabilities and maritime experience in the UK and Europe spans planning and the design of container/bulk terminals, energy/renewable facilities, new quays and jetty berths, breakwaters, dredging, associated onshore facilities, intakes/outfalls, and facilities for waterfront projects through to marine and cruise terminals.

Our clients include Government Authorities, Port Authorities, Port Operators, Energy Companies, Shipping and Cruise Lines, Contractors, Developers and Investment Banks.

Our senior personnel are recognised experts and represent the industry on technical committees such as British Design Standards and PIANC Working Groups, as well as regularly presenting at conferences and seminars.

The Ports and Marine Division has a team of about 50 maritime engineers in UK and Europe, with key offices in London, Basingstoke, Glasgow, Plymouth, Manchester and The Hague.

The team has an active workload of between 30 and 40 maritime projects at any one time, ranging from small studies to large design and supervision projects which extend over a number of years. We are used to delivering quality projects to tight deadlines and budgets.

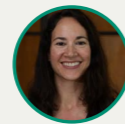
## Offices

- London
- Basingstoke
- Glasgow
- Plymouth
- Liverpool
- The Hague

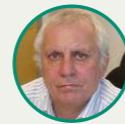
## Key Contacts



**Alistair Chan**  
UK&I Head of Ports and Marine  
+447769174048  
alistair.chan@aecom.com



**Henar Fernandez Ruiz de la Sierra**  
Director New Markets, Spain  
+34626868309  
henar.fernandez@aecom.com



**David Meikle**  
Technical Head – Maritime Disciplines  
+447827449380  
david.meikle@aecom.com

## Services

- Prequalification and Tendering Process
- Project and Program Management
- Freight Rail and Intermodal Yards Design
- Engineering Design (Conceptual & Detailed)
- Construction Management
- Contract Administration including The Engineer role under FIDIC terminology
- Due Diligence and Condition Assessments, Asset Management, Port Planning, Coastal Engineering, Geotechnical Engineering, Environmental Assessment and Permitting, Strategic and Economic Evaluation, Intakes and Outfalls

## Clients

- APM Terminals (APMT)
- Terminal Investment Limited (TIL)
- Associated British Ports (ABP)
- Global Port Holdings (GPH)
- Dubai Ports World (DPW)
- CMA CGM
- Port of Singapore (PSA)
- BAE Systems
- Defence Infrastructure Organisation (DIO)
- BP / Shell
- Various construction contractors: Besix, Archirodon, Eiffage, Acciona

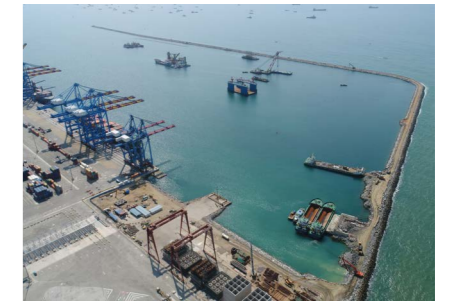
# Project Experience



**London Gateway Automated Container Terminal Design and Site Support**  
UK



**APMT MedPort Tangier Automated Container Terminal Design**  
Morocco



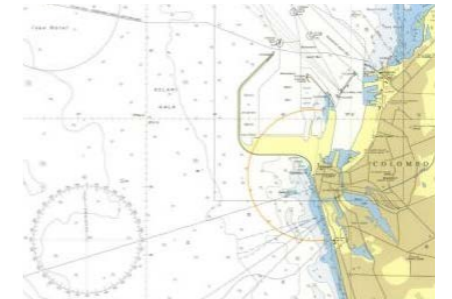
**Tema New Port Design, Bid Phase and Program Management**  
Africa



**Jazan Economic City Port**  
Saudi Arabia



**LNG to Power Project Design and Construction Services**  
Malta



**Colombo Northport Feasibility and Master Plan**  
Sri Lanka



**Wind Turbine Manufacturing Site Search and Selection**  
UK



**Devonport Royal Dockyard**  
UK



**Nassau Cruise Terminal**  
Bahamas

AECOM is an integrated infrastructure provider of professional, technical and management support services. We are a dedicated team of port and marine specialists, focused on facilitating, conceptualizing, and overseeing projects that optimize maritime trade and leisure opportunities.

Our expertise lies in facilitating seamless operations for public and private sector clients, ensuring efficient and thriving marine environments. Our port planners, engineers, operators, simulation specialists, and program managers offer services from the project's inception to completion.

AECOM has extensive experience in delivering the ports & marine infrastructure in the Middle East, including in KSA, UAE, Bahrain, Kuwait, Qatar and in African countries by capitalizing on our local and global resources and integrated delivery platform.

## Services

- Port Planning
- Project and Program Management
- Port Engineering Design
- Port Policy and Management
- Port Asset Management
- Coastal Engineering
- Cost Management
- Environmental Assessment and Management
- Automation and Simulation

## Offices

- KSA
- Dubai
- Bahrain
- Qatar
- South Africa

## Key Contacts



**Craig Thakrey**  
Vice President, MEA  
craig.thackray@aecom.com  
+971 562195965



**Juan Recio**  
Senior Director, Ports Market  
Sector Leader  
juan.recio@aecom.com  
+971506539588



**Emre Usur**  
Technical Associate Director - Ports,  
Marine, Bahrain  
emre.usur@aecom.com  
+97317589827

## Clients

- Abu Dhabi Ports
- DP World
- Abu Dhabi National Oil Company
- China Harbour Engineering Company
- NEOM Saudi Arabia
- MODON Abu Dhabi
- DAMAC Group Dubai
- Kuwait Oil Company

# Project Experience



**Das Island**  
Abu Dhabi



**Jebel Ali Container Terminal 4 DP World**  
Dubai



**Jeddah Islamic Terminal DP World**  
Jeddah



**New Doha Port Planning & PMC**  
Qatar



**Diyar Al Muharraq reclamation and design**  
Bahrain



**NEOM OXAGON Port Planning & Design**  
Red Sea



**Dibba Bulk Handling Terminal**  
Fujairah



**Guggenheim Marine Quaywalls Planning & Design**  
UAE



**Planning and Design of Artificial Beaches at Paradise Island**  
Abu Dhabi

# ASIA and INDIAN SUBCONTINENT

AECOM has been providing maritime engineering services in the Asia markets for more than 50 years with offices and resources located in all key markets in Asia and Indian subcontinent.

AECOM's Hong Kong, Singapore and Gurugram, India offices serve as the Center of Excellence for providing integrated planning and design services to government entities, port authorities, private terminal operators and developers with support from AECOM's global offices.

AECOM provides extensive feasibility studies, port master plan geotechnical, marine structural, dredging and reclamation, utilities, buildings and MEP services in developing innovative solutions to the ports & maritime industry.

## Offices

- Singapore
- Hong Kong
- Bangkok
- Gurugram, India
- Chennai, India

## Key Contacts



**Stanley Liu**  
Executive Director, Ports & Marine  
China and South Asia  
stanley.liu@aecom.com  
+85266272531



**Sanjeev Gupta**  
Vice President, Transportation, India  
sanjeev.gupta@aecom.com  
+919810156897

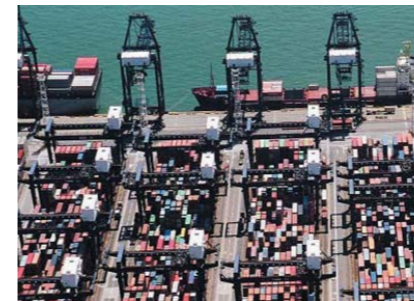
## Services

- New port developments
- Coast guard and naval bases
- Breakwaters
- Inland waterways
- Dredging and reclamation
- Marinas and leisure
- Container terminals
- Port Infrastructure (road, rail, utilities, buildings and associated development)
- Oil and gas terminals
- Waterfront Development
- Ferry and Ro-Ro terminals
- Coastal Resilience
- Dry bulk terminals
- Shoreline Management
- Cruise Terminals
- Submarine cables and pipelines
- Shipyards and ship repair
- Wind energy foundations

## Clients

- Hutchinson Ports
- Port Authority of Singapore
- Sapangar Ports Sdn Bhd
- APM Terminals
- Tianjin Port Group
- Modern Terminals
- Hongkong International Terminals
- CSX World Terminals Hong Kong
- Ministry of Shipping, India
- Major Port Authorities, India
- DP World
- ITD Cementation
- AFCONS India
- Arcelor Mittal & Nippon Steel India Limited

# Project Experience



**Kwai Tsing Terminals T1-T9 Refurbishment and Upgrading (MTL, HIT, DP World, ACT, Cosco)**  
Hong Kong



**Juliet Pier Shore Power Upgrades for US Navy CFA**  
Japan



**Pengerang Stage 1 Oil Terminal (Dialog/Vopak)**  
Malaysia



**Manila International Container Terminal (ICTSI)**  
Philippines



**Tuas Megaport 1, 2 and 3**  
Singapore



**Laem Chabang Automated Container (Hutchison)**  
Thailand



**General Consultancy for Kochi Water Metro Project**  
India



**Project Seabird Marine Works and Program Management**  
India



**Saigon Premier Container Terminal – DP World**  
Vietnam

AECOM enjoys a strong reputation in all sectors of the transportation market for providing our clients with well integrated multimodal transport solutions for bulk solids, liquids, containers and general cargo.

As a leader in ports for over 80 years, we work closely and collaboratively with a diverse range of clients including public and private port owners, port operators and managers, contractors, freight logistics companies, government authorities, mining companies, and financial institutions; to deliver a full range of services.

Our port teams work with our transportation, mining, civil infrastructure, environmental, energy, supply chain simulation and project delivery teams to provide our clients with holistic and optimised solutions.

Ports service capability includes strategic advisory services, concept development, feasibility studies, permitting and approvals, cargo and shipping analysis, economic studies including business case analysis, engineering design, project and construction management, asset management and operations advice.

We have significant experience in bulk solids and liquids terminals for the mining and oil and gas sectors, container and general cargo terminals, defence facilities and other specialised terminals.

## Offices

- Perth
- Adelaide
- Melbourne
- Sydney
- Newcastle
- Brisbane
- Townsville
- Cairns
- Christchurch

## Key Contacts



**Michael Hill**  
Director - Bridges, Structures & Ports, ANZ  
michael.j.hill@aecom.com  
+61448060185



**Ali Sarandily**  
Industry Director  
Ports & Marine, ANZ  
ali.sarandily@aecom.com  
+61 400 504 947



**Chris Boyd**  
Sector Manager Bridges, Structures & Ports - VIC, SA & TAS  
Chris.Boyd1@aecom.com  
+61 438 074 495

## Services

- Port Economics
- Port Environment Services
- Port Planning
- Port Construction
- Port Operations
- Port Maintenance
- Coastal Engineering
- Condition Assessment and Asset Life Extension
- Material Handling System
- Bulk liquid terminals
- Dry bulk terminals
- Coastal Structures and Shore Protection
- Multi-purpose and general cargo terminals
- Materials offloading facilities
- Ship building and repair facilities
- Boat Ramps and Marinas
- Ro-Ro terminals
- Asset Life Extension

## Clients

- DP-World
- Victoria International Container Terminal
- BHP
- Rio Tinto
- Woodside Energy
- Midwest Ports Authority
- Pilbara Ports Authority
- Fremantle Port Authority
- Southern Ports Authority
- Port of Melbourne
- Port of Townsville
- Department of Transport
- Department of Defence
- Various Construction Contractors

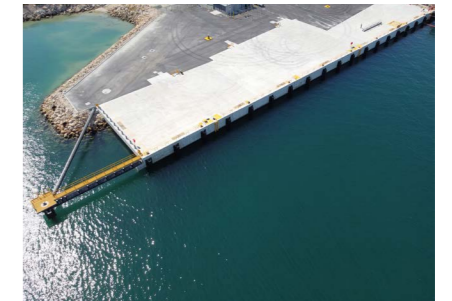
# Project Experience



**King Bay Supply Base – Land Backed Wharf and Tug Pen Assessment**  
Karratha, Australia



**BHP Iron Ore Berths C and D Asset Life Extension (Assessment and Refurbishment Design)**  
Port Hedland, Australia



**Detail Design of AMC 1 Extension and a New Wharf 7 & 8, Henderson**  
Perth, Australia



**FMG Berths 1, 2 and 3 Iron Ore Export Jetty Design**  
Port Hedland, Australia



**Transforming Bunbury's Waterfront Stage 3 Business Case Study and Conceptual Design Development**  
Bunbury, Australia



**Port Botany Planning, Design and Logistics Yard Expansion Projects**  
Sydney, Australia



**Oxley Wharf Extension Design, Garden Island West**  
Perth, Australia



**Woodside LNG Export Jetty Assessment and Refurbishment Design**  
Karratha, Australia



**Port of Townsville - Upgrade Design of the Berth 3, 4 & 10**  
Townsville, Australia

## About AECOM

AECOM is the global infrastructure leader, committed to delivering a better world. As a trusted professional services firm powered by deep technical abilities, we solve our clients' complex challenges in water, environment, energy, transportation and buildings. Our teams partner with public- and private-sector clients to create innovative, sustainable and resilient solutions throughout the project lifecycle — from advisory, planning, design and engineering to program and construction management. AECOM is a Fortune 500 firm that had revenue of \$16.1 billion in fiscal year 2025. Learn more at [aecom.com](https://aecom.com).

