

# A Cumulative Approach for Environmental Justice Evaluation and Planning



Meaningful community engagement with environmental justice (EJ) communities and EJ evaluations that consider the direct and indirect cumulative impacts of a project are becoming a requirement for state and federal permit processes.

## Complementary Services

- Comprehensive EJ Planning and Scoping
- Strategic Meaningful Community Engagement
- Environmental Permitting and Planning
- ESG Advisory Services
- Climate Equity/Justice Guidance
- Climate Change Adaptation and Mitigation
- Natural Disaster Preparedness Review and Guidance
- Office of Native Sovereign and Tribal Relations

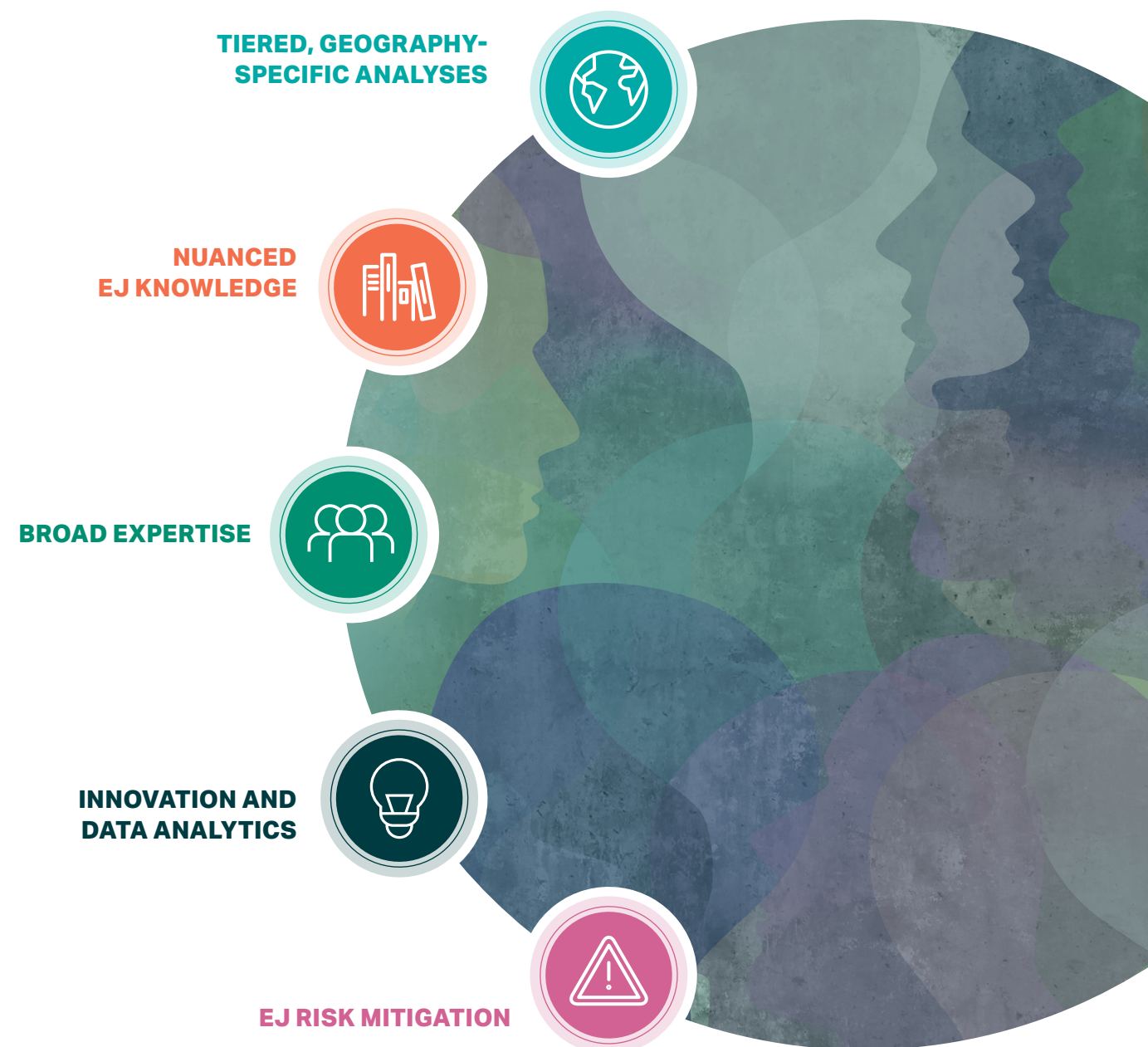
## Overview

Executive Order (EO) 12898, Federal Actions to Address Environmental Justice in Minority Populations and Low-Income Populations, was the first executive action on EJ signed in 1994. It required federal agencies to consider EJ issues and impacts in their planning and decision-making process. EO 14008 on Tackling the Climate Crisis at Home and Abroad, signed on January 27, 2021, outlined an ambitious strategy to respond to climate with an emphasis on EJ. The US federal government have announced strategies to strengthen environmental enforcement, agencies are incorporating EJ concerns into project permitting and environmental reviews, and the White House has provided key guidance to help agencies direct funding to advance EJ. EO 14008 also includes the establishment of the White House Environmental Justice Advisory Council which has several responsibilities including recommendations for updating the EO 12898 to address current and historic environmental injustice.

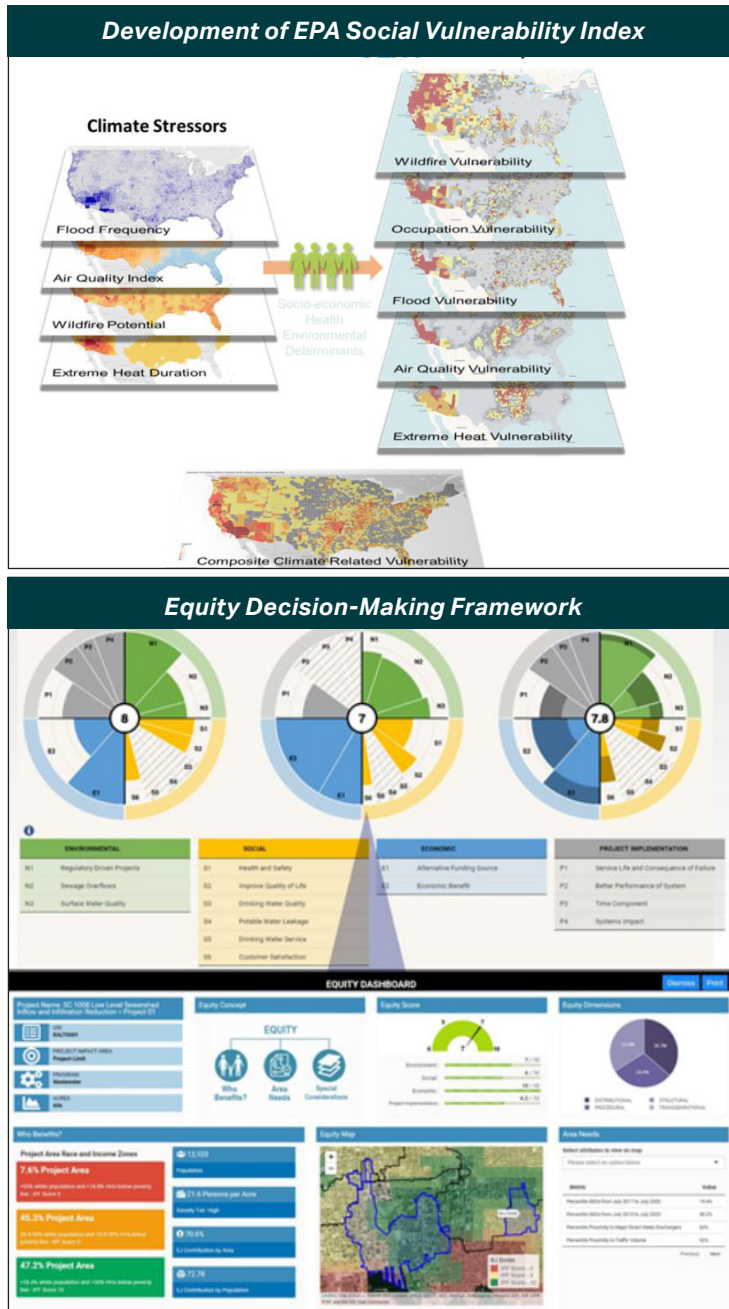
The environmental framework established by these initial actions is unprecedented in scope and potential impact. The early actions have been followed by agency plans that have provided the regulated community with advance notice of future environmental enforcement priorities. These measures are expected to have a variety of modified actions at the national and local levels. In light of this shift, entities should consider incorporating several best practices to remain ahead of the evolving EJ regulatory and enforcement landscape.

## Key AECOM Attributes

- AECOM has been supporting EJ assessments for federal and private sector clients for decades
- Our experienced staff wield exemplary knowledge of EJ issues, Justice 40 initiatives, and the Climate and Economic Justice Screening Tool (CJEST)
- AECOM has developed an equity-based prioritization method to support clients with project and program level evaluations



# A Cumulative Approach for Environmental Justice Evaluation and Planning *(continued)*



## Our Approach

Federal and State level initiatives and legislations in support of environmental justice is moving quickly. The USEPA has recently updated Environmental Justice Mapping and Screening Tool called EJSscreen. Use of this tool may, at best, provide businesses with an elementary understanding of the EJ related issues for their sites.

AECOM offers a rigorous science-backed approach, based on the most current peer-reviewed research, for evaluating the direct and indirect cumulative impacts of business decisions on the surrounding communities and generating inferences that will be cross-cutting for the benefit of business infrastructure. Our clients are gaining more innovative, holistic, and transformational solutions to solve for EJ issues well beyond basic EJ mapping.

Key benefits of engaging the AECOM team for EJ evaluations include:

- **TIERED, GEOGRAPHY-SPECIFIC ANALYSES** – stepwise analysis developing meaningful inferences using 1) federally approved data 2) state-specific data to enhance the analysis and 3) desktop research on state and local regulatory development and requirements as well as tribal and indigenous rights.
- **NUANCED EJ KNOWLEDGE** – a technical knowledge base that provides transformative value, including socio-economic statistics, tribal sovereignty, and community consciousness.
- **BROAD EXPERTISE** – our deep bench of technical, research, commercial, and project management staff bring their skills to our partnerships with stakeholders and regulators.
- **INNOVATION AND DATA ANALYTICS** – our connected global network bring their technical and process innovation skills to solve some of the most complex challenges in EJ screening and equity mapping, leveraging available data sets.
- **EJ RISK MITIGATION** – whether ranking risk across a fleet of facilities, preparing clients for the rollout of regulatory requirements, or providing recommendations on how to engage and/or serve a surrounding EJ community, AECOM has the expertise to provide the next step.



## EJ Evaluation Report

### Desktop Deep Dive Results

- EJ and/or Tribal Enacted or Pending Regulations
- Impacts of Regulations on Permitting and operations
- NGOs and their Implications
- Environmental/Climate Concerns
- Impactful Historical Events

### Enhanced EJ Score and Methodology

DESCRIPTION	PLANNING BUDGET TO DATE (FY)	STARTED VALUE TO DATE (FY)	ACTUAL COST TO DATE (FY)	CERT. NUMBER	NUMBER	TOTAL AUTHORIZED BUDGET (FY)	STARTED AT COMPLETION (FY)	ACTUAL AT COMPLETION (FY)
Project								
Sub-Project								
Activity								
Task								
Item								

Quis es nis ea nis nes reiumqu  
 Odipsust et eos mo es quam  
 Repudit asimpor erferrum

### Overall EJ Risk Rankings

Ligeniati dunt hilit eostisque ea pe sandistrum iducitati repeliq uassintur? Quis es nis ea nis nes reiumqu odipsun tinist et eos mo es quam repudit asimpor erferrum, nimus, aut vendustia et RecommendationsLigeniati dunt hilit eostisque ea pe sandistrum iducitati repeliq uassintur. Quis es nis ea nis .nes reiumqu odipsun tinist et eos mo es quam repudit asimpor erferrum, nimus, aut vendustia et

### Recommendations

- Ligeniati dunt hilit eostisque ea pe sandistrum iducitati repeliq uassintur. Quis es nis ea nis nes reiumqu odipsun tinist et eos mo es quam repudit asimpor

### Standard EJ Score Infographic

