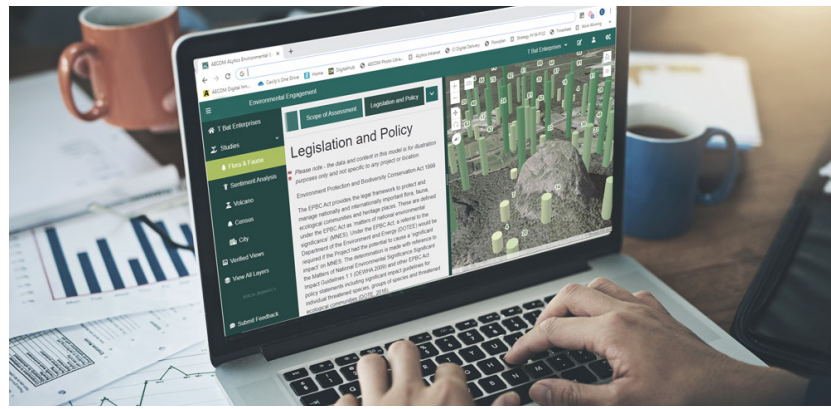


PlanEngage

reporting and engagement for the 21st century



AECOM's PlanEngage is one of the world's best stakeholder engagement and visualization tools. The cloud-hosted data visualization, digital collaboration and report production platform is unlocking the value of project information by revolutionizing the way we develop and share it with stakeholders.

Key Benefits

- **More effective communication:** improves the way technical information is communicated by integrating text with interactive mapping and media
- **Better engagement:** in-built feedback capture and analysis increases reach and participation
- **Improved collaboration:** roles and permissions allow multiple parties to create content together
- **More efficient reporting:** automated review and approval workflows with progress dashboarding
- **Aligned with best practice:** demonstrated commitment to transparency and innovation
- **Reduced printing:** takes reporting into the cloud for smaller environmental footprint and reduced costs

Overview

AECOM's PlanEngage offers a modern and best-practice alternative to traditional reporting formats. By combining advanced software development with industry-leading data management and visualization technologies, PlanEngage offers a unique and versatile approach to online content creation and communication.

The outcomes are digital report products that make project data more engaging, more accessible, easier to understand, and encourages participation to deliver more meaningful engagement with stakeholders.

AECOM's PlanEngage is the next stage in the evolution of reporting.

Core Applications

- **DIGITAL ENVIRONMENTAL IMPACT ANALYSIS (EIA)** – helps streamline permitting by greatly enhancing the way EIAs are being communicated and making them more accessible, more engaging and easier to understand.
- **COMMUNITY ENGAGEMENT** – map-based feedback and embedded forms enables collection of sentiment and structured feedback from stakeholders. Real-time analytics give important new insights into stakeholder concerns and areas of focus.
- **TECHNICAL REPORTING** – easy role and permission configuration combines with built-in production and approval workflows for more collaborative and efficient reporting, saving time and money. Improved presentation of technical reporting supports better-informed decision-making.
- **ENVIRONMENTAL MONITORING** – a dynamic reporting environment that protects published content and allows for seamless integration of updates over the lifetime of the project. Environmental Monitoring reports demonstrate change over time.



“PlanEngage is ideal for remote working conditions as it allows the user to explore details of the scheme in an easy way and is the perfect tool for us to share information with our many stakeholders. This is a real step forward in making our permitting application more transparent and accessible.”

Anne-Marie Rogers, Highways England Senior Project Manager and Permitting Workstream Lead

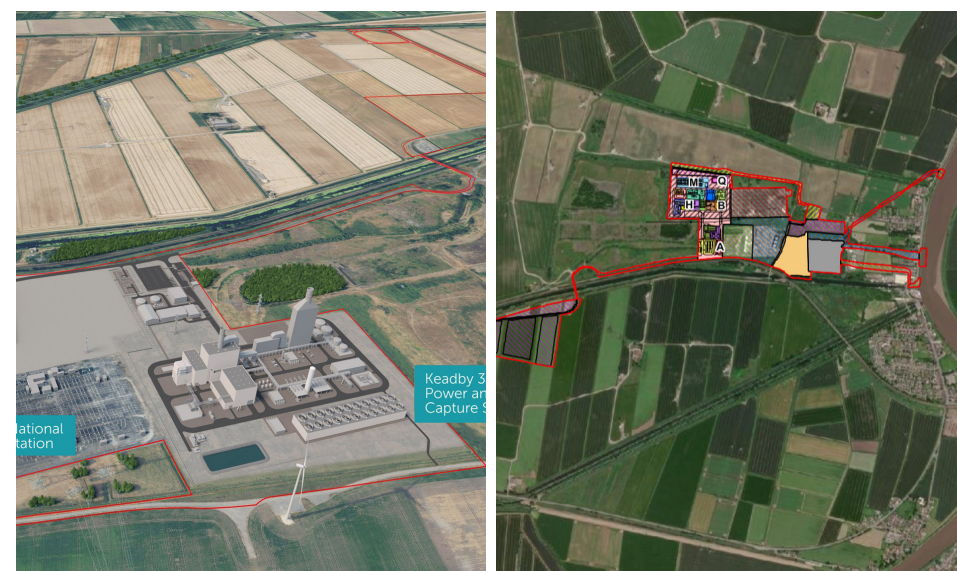
Leading-Edge PlanEngage Case Studies

Keadby 3, SSE Thermal

AECOM leveraged PlanEngage in the development of a Digital Preliminary Environmental Information (PEI) Non-Technical-Summary. The Detail PEI NTS, the first of its kind in the UK, provides a slick, interactive and engaging index to the project. By merging in text, visualisations and mapping, there is a much-improved consultation experience compared to the traditional PDF format, supporting stakeholders as they engage at this crucial stage of the project's lifecycle.

This project also represented the first merger of the PlanEngage tool with AECOM's industry-leading Virtual Consultation, creating a truly unique and industry-first digital engagement experience.

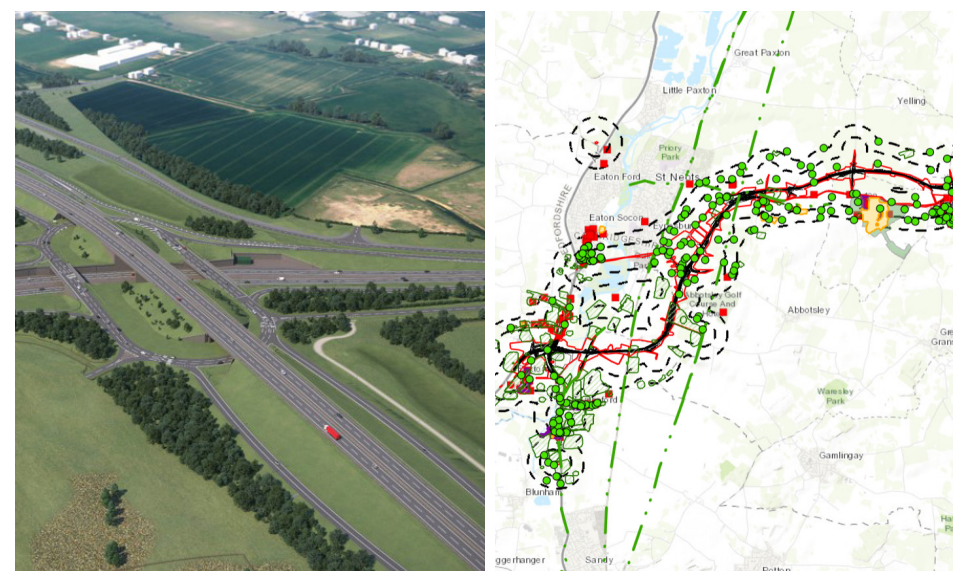
 **READ MORE**



A428 Black Cat to Caxton Gibbet, Highways England

Developed a Digital Environmental Statement (ES) in support of the application for development consent. The Digital ES was developed jointly between AECOM and the client's Comms team, demonstrating the tool's power as a digital collaboration platform. Provided users with a feature-rich alternative to pdf/print documents, integrating interactive mapping, virtual flythrough videos and before and after imagery to bring the project to life and quick and easy access to the full development consent order application package. The tool supported the client's engagement with statutory stakeholders, including local authorities, who utilised the tool in support of their own statutory duties under the Planning Act.

 **READ MORE**



Sizewell C, EDF

This Digital ES is the largest, most complex digital EIA project seen in the UK. With a site for each of the project's development sites, and an overarching introduced site, the Sizewell Digital ES includes 10 interconnected digital reports with a shared database of spatial data/media to support data efficiency and consistency.

Developed to support EDF's application for development consent, functioned as a key resource for the project's multi-organisational planning and environment teams as they prepared to meet requirements of the DCO examination.

Throughout the project, the site was updated to include design changes, updated assessments and new survey information, with changes made securely and seamlessly pushed, without affecting user experience.

 **READ MORE**



More Information: AskEnvironment@aecom.com