

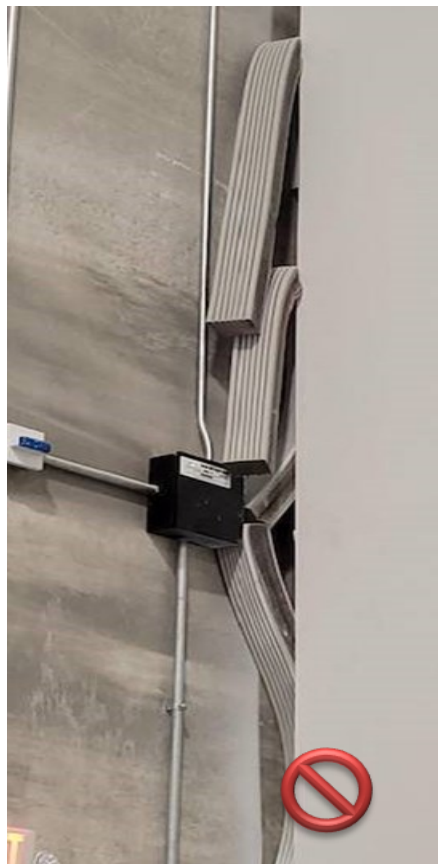
Precast or tilt-up concrete panels will have lateral deflection from wind pressure (positive and negative). The deflection will depend on many design elements, including rebar in the concrete and length of the panels from connection points.

We need to ask the panel engineer what the expected lateral deflection will be so that we could have the Architect design the proper interior partition perpendicular joint based on fire rating and joint material.

This request should be made during bidding



The fire rated joint exceeded the capability of the fire spray and separated at the drywall partition.



The Silicone/foam joint was installed incorrectly and most likely the wrong size to accommodate the movement of the panels.



Electrical conduits and insulation panels cannot be within the fire rated joint. The insulation needs to be cut before and after the interior partition



Precast Panel insulation was cut on either side of the partition and the silicone/foam joint is installed properly

Generally, the interior partition gap at the concrete wall should be 2x the width of the expected lateral deflection (confirm with the filler material)