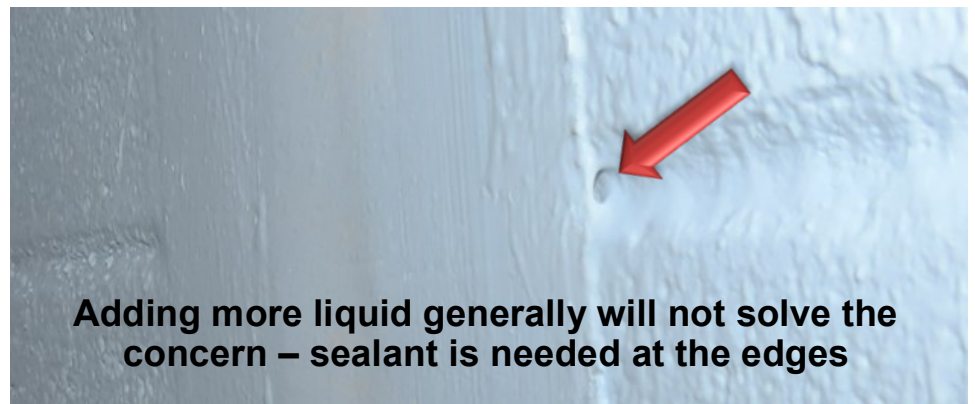
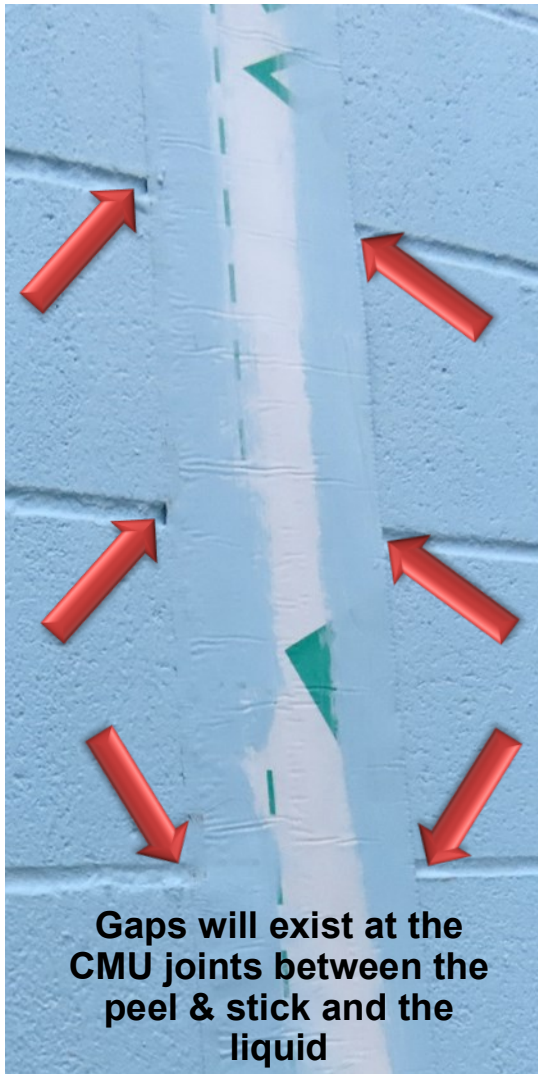


## CMU & Membeane Detailing

When installing liquid AVB and peel and stick membrane on CMU, unless the CMU joints are struck flush, the concave joints will create an opening in the air barrier system under the peel and stick membrane.

*The product installation order will not change the concern.*



Installing the manufacturer's sealant over the joint between the peel and stick membrane and the liquid AVB will close off the openings that will likely exist at the CMU joints.

*This may or may not be a requirement from the AVB Manufacturer; however, it will be necessary to avoid gaps at the CMU joints.*

Make sure the concern is identified early and properly bid.