



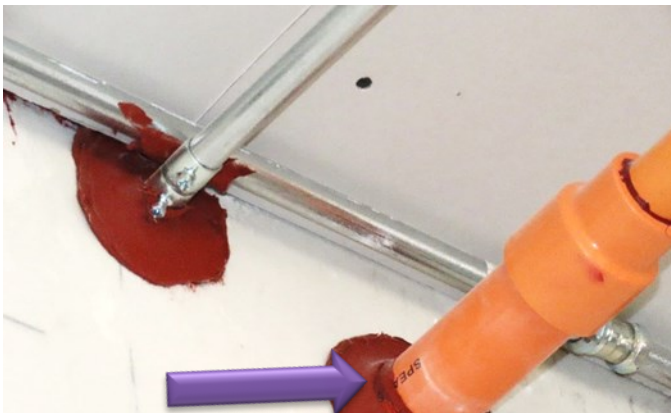
Precision Points

Pipe Support

When MEP pipes penetrate a fire-rated wall, there is a requirement by the testing (such as a UL Testing assembly) that the penetrating item be

“rigidly supported on both sides of the floor or wall”

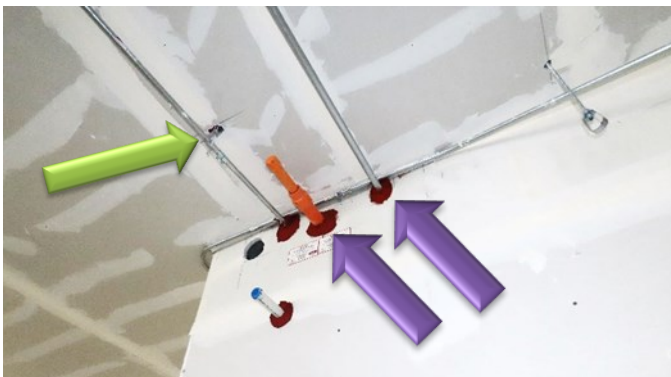
If the penetrating item is not rigidly supported, the pipe could move and dislodge the fire stopping on either side of the wall after the fire stopping installation and the drywall is not designed to support the pipes or ductwork.



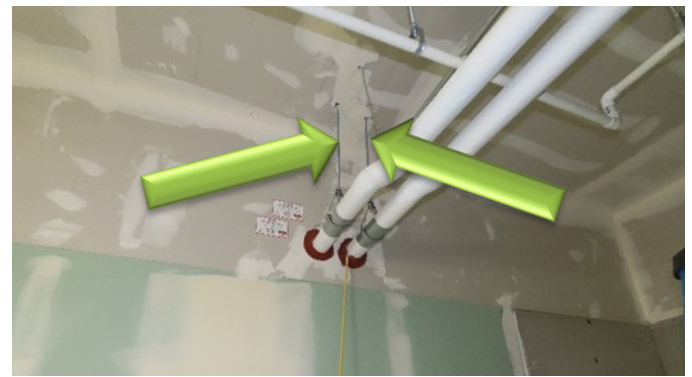
The orange plastic pipe has been moved after the installation of the fire stopping.



The round mechanical duct has been moved during the installation of the next component after the fire stopping was in-



One electrical pipe was properly supported, while the other electrical and orange pipe was not.



Both plumbing pipes are properly supported.

Please discuss with the Firestopping and the MEP Contractors to review this requirement from the tested assembly.

Always review your installations as they are being installed.